

# Instructions for Section B

**EXIT**

## SECTION B – Short answer questions

**30 Marks**

Answer **all** questions.

Each question is answered by typing a response into the answer field provided.

All the text you enter will be automatically saved.

You can review and change your answers at any time.

Times  
Materials  
Instructions  
Structure  
Section **A**

1 2  
3 4  
5 6  
7 8  
9 10  
11 12  
13 14  
15 16  
17 18  
19 20

Section **B**

1 2  
3 4  
5 6  
7 8  
9 10  
11 12  
13

Section **C**

Intro

1 2  
3 4

**BACK****NEXT**

## Section B, Question 1

EXIT

Times  
Materials  
Instructions  
Structure  
Section A

1 2  
3 4  
5 6  
7 8  
9 10  
11 12  
13 14  
15 16  
17 18  
19 20

Section B

1 2  
3 4  
5 6  
7 8  
9 10  
11 12  
13

Section C

Intro

1 2  
3 4

Consider the two images of text below.

cat cat

- a. Name the technique that has been applied to the image on the right to improve its appearance.

1 mark

- b. How does this technique work?

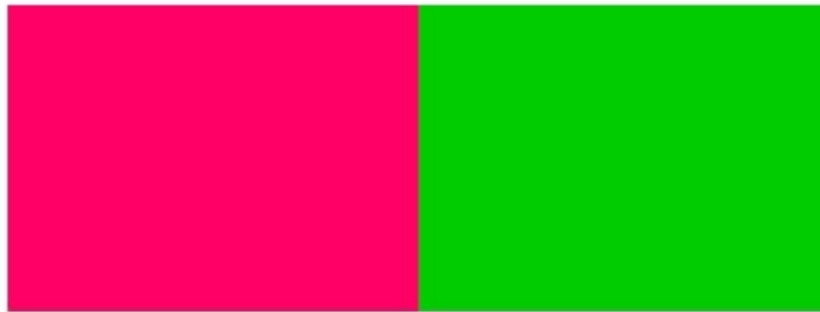
1 mark

BACK

NEXT

## Section B, Question 2

EXIT



You are to design a new logo for the company Fifties Plus Funds Australia. Your client has asked you to consider the above colours in the logo design.

Are these colours suitable for the client's target audience? Explain your answer.

2 marks

Times

Materials

Instructions

Structure

Section A

1 2

3 4

5 6

7 8

9 10

11 12

13 14

15 16

17 18

19 20

Section B

1 2

3 4

5 6

7 8

9 10

11 12

13

Section C

Intro

1 2

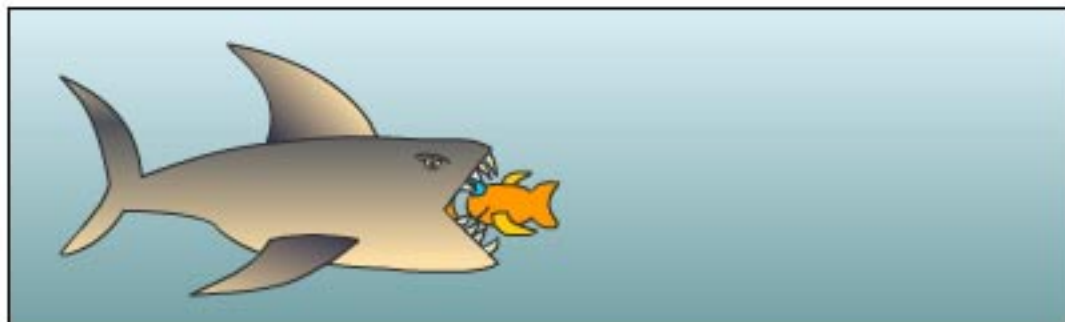
3 4

BACK

NEXT

## Section B, Question 3

EXIT



In the animation above, which technique was most likely used to animate

a. the shark

1 mark

b. the fish.

1 mark

Times

Materials

Instructions

Structure

Section A

1 2

3 4

5 6

7 8

9 10

11 12

13 14

15 16

17 18

19 20

Section B

1 2

3 4

5 6

7 8

9 10

11 12

13

Section C

Intro

1 2

3 4

BACK

NEXT

## Section B, Question 4

EXIT

Times  
Materials  
Instructions  
Structure  
Section A

1 2  
3 4  
5 6  
7 8  
9 10  
11 12  
13 14  
15 16  
17 18  
19 20

Section B

1 2  
3 4  
5 6  
7 8  
9 10  
11 12  
13

Section C

Intro

1 2  
3 4

a. What is an appropriate file format for delivering sound online?

1 mark

b. Give one reason why this format is appropriate.

1 mark

BACK

NEXT

## Section B, Question 5

EXIT

```
1.  function checkSpeed(distance,time)
2.      speed = distance/time
3.      if speed < speedLimit then
4.          print("Slow down!")
5.      end if
6.  end
```

a. Identify the line of the above pseudocode that has an error in its logic. 1 mark

b. Rewrite the line you have identified with the correct pseudocode. 1 mark

Times

Materials

Instructions

Structure

Section A

1 2

3 4

5 6

7 8

9 10

11 12

13 14

15 16

17 18

19 20

Section B

1 2

3 4

5 6

7 8

9 10

11 12

13

Section C

Intro

1 2

3 4

BACK

NEXT

## Section B, Question 6

EXIT

Times  
Materials  
Instructions  
Structure  
Section A

1 2  
3 4  
5 6  
7 8  
9 10  
11 12  
13 14  
15 16  
17 18  
19 20

Section B

1 2  
3 4  
5 6  
7 8  
9 10  
11 12  
13

Section C

Intro

1 2  
3 4

```
AddNameToList (name)
  if queryList(name) = false then // See if name is in list
    updateList (name)
    printToScreen(name + " has been added to the list.")
  else
    printToScreen(name + " is already in the list.")
  end if
end function
```

If the function is called twice as follows,

```
call AddNameToList ("John")
call AddNameToList ("John")
```

what will be the output to the screen?

2 marks

BACK

NEXT

## Section B, Question 7

EXIT

```
var robotReady
if robotReady is true then
  MoveRobot()
end if
```

- a. In the code above, what kind of scripting element is robotReady and what type of value does it contain?

2 marks

- b. In the code above, what does MoveRobot() do?

2 marks

Times

Materials

Instructions

Structure

Section A

1 2

3 4

5 6

7 8

9 10

11 12

13 14

15 16

17 18

19 20

Section B

1 2

3 4

5 6

7 8

9 10

11 12

13

Section C

Intro

1 2

3 4

BACK

NEXT



# Section B, Question 8

**EXIT**

Times

Materials

Instructions

Structure

Section A

1 2

3 4

5 6

7 8

9 10

11 12

13 14

15 16

17 18

19 20

Section B

1 2

3 4

5 6

7 **8**

9 10

11 12

13

Section C

Intro

1 2

3 4

Explain two benefits of consistency in the design of a website.

2 marks

**BACK****NEXT**

## Section B, Question 9

EXIT

Times  
Materials  
Instructions  
Structure

## Section A

1 2  
3 4  
5 6  
7 8  
9 10  
11 12  
13 14  
15 16  
17 18  
19 20

## Section B

1 2  
3 4  
5 6  
7 8  
9 10  
11 12  
13

## Section C

## Intro

1 2  
3 4

a. What is website validation?

1 mark

b. Give one reason why it should be used.

1 mark

BACK

NEXT

## Section B, Question 10

EXIT



a. What type of information structure does the diagram above represent?

2 marks

b. Name two benefits of using this type of structure in website navigation design.

2 marks

Times

Materials

Instructions

Structure

Section A

1 2

3 4

5 6

7 8

9 10

11 12

13 14

15 16

17 18

19 20

Section B

1 2

3 4

5 6

7 8

9 10

11 12

13

Section C

Intro

1 2

3 4

BACK

NEXT

# Section B, Question 11

**EXIT**

Times

Materials

Instructions

Structure

Section A

1 2

3 4

5 6

7 8

9 10

**11 12**

13 14

15 16

17 18

19 20

Section B

1 2

3 4

5 6

7 8

9 10

**11 12**

13

Section C

Intro

1 2

3 4

The text below is to be used in an organisation's website.

The XYZ999 is the company's crème de la crème flagship top-notch model so far developed in a long line of in your face products that is destined to become as famous as the company itself that constantly astounds the hungry for hi-tech technophobe's who are constantly looking for that new cutting edge product fix.

Identify two problems with the structure and/or writing style of the above sample of text. 2 marks

**BACK****NEXT**

## Section B, Question 12

EXIT

Times  
Materials  
Instructions  
Structure  
Section A

1 2  
3 4  
5 6  
7 8  
9 10  
11 12  
13 14  
15 16  
17 18  
19 20

Section B

1 2  
3 4  
5 6  
7 8  
9 10  
11 12  
13

Section C

Intro

1 2  
3 4

- a. Use the following text and any other words necessary to write a sentence in the passive voice.

**boy bike hill**

1 mark

- b. Use the following text and any other words necessary to write a sentence in the active voice.

**large elephants 2 tonnes**

1 mark

# Section B, Question 13

**EXIT**

Times  
Materials  
Instructions  
Structure

**Section A**

1 2  
3 4  
5 6  
7 8  
9 10  
11 12  
13 14  
15 16  
17 18  
19 20

**Section B**

1 2  
3 4  
5 6  
7 8  
9 10  
11 12

**13****Section C****Intro**

1 2  
3 4

Below is a piece of instructional text.

**Now you take the thin end (I always start with the thin end) and, as I find this hard, carefully unwrap the paper covering.**

Rewrite the above paragraph so that it is suitable for use in a product manual.

2 marks

**BACK****NEXT**