

Instructions for Section A

EXIT

SECTION A – Multiple-choice questions

20 Marks

Answer **all** questions.

Choose the response that is correct or best answers the question.

Click the button next to the correct answer. Your answer is confirmed in the box at the base of the question.

Each question is worth one mark. Marks will not be deducted for incorrect answers.

Answers will be automatically saved.

You can review and change your answers at any stage.

Times
Materials
Instructions
Structure

Section A

1 2
3 4
5 6
7 8
9 10
11 12
13 14
15 16
17 18
19 20

Section B

1 2
3 4
5 6
7 8
9 10
11 12
13

Section C**Intro**

1 2
3 4

BACK**NEXT**

Section A, Question 1

EXIT

An image constructed using a mathematical statement is called

- A** a bitmapped image.
- B** a pixelated image.
- C** an animated gif.
- D** a vector image.

Click on an answer button (A,B,C or D) or use the keyboard to select your answer.

Selected response:

BACK**NEXT**

Times

Materials

Instructions

Structure

Section A

1 2**3 4****5 6****7 8****9 10****11 12****13 14****15 16****17 18****19 20**

Section B

1 2**3 4****5 6****7 8****9 10****11 12****13**

Section C

Intro

1 2**3 4**

Section A, Question 2

EXIT

What design element do the illustrations below have in common?

A shape



B texture

C organic

D balance



Selected response:

BACK

NEXT

Times

Materials

Instructions

Structure

Section A

1 2

3 4

5 6

7 8

9 10

11 12

13 14

15 16

17 18

19 20

Section B

1 2

3 4

5 6

7 8

9 10

11 12

13

Section C

Intro

1 2

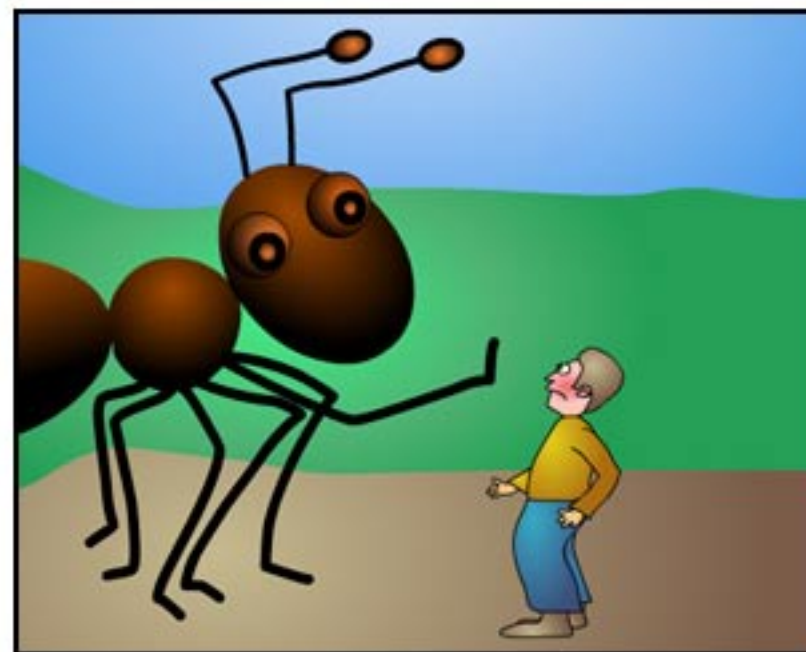
3 4

Section A, Question 3

EXIT

The two **main** design principles applied to create the impact of the image below are

- A** balance and proportion.
- B** proportion and texture.
- C** balance and rhythm.
- D** texture and rhythm.

Selected response:

BACK

NEXT

Times

Materials

Instructions

Structure

Section A

1 2

3 4

5 6

7 8

9 10

11 12

13 14

15 16

17 18

19 20

Section B

1 2

3 4

5 6

7 8

9 10

11 12

13

Section C

Intro

1 2

3 4

Section A, Question 4

EXIT

Increasing the tracking of a page of text will increase the space between

- A** lines.
- B** pages.
- C** characters.
- D** paragraphs.

Selected response:

BACK

NEXT

Times
Materials
Instructions
Structure

Section A

1 2
3 4
5 6
7 8
9 10
11 12
13 14
15 16
17 18
19 20

Section B

1 2
3 4
5 6
7 8
9 10
11 12
13

Section C

Intro

1 2
3 4

Section A, Question 5

EXIT

Times
Materials
Instructions
Structure

Section A

1 2
3 4
5 6
7 8
9 10
11 12
13 14
15 16
17 18
19 20

Section B

1 2
3 4
5 6
7 8
9 10
11 12
13

Section C**Intro**

1 2
3 4

Complete the following statement by choosing the most correct option.

Copyright is

- A** only assigned for companies.
- B** assigned only after being applied for.
- C** automatically assigned when the work is copied.
- D** automatically assigned when the work is created.

Selected response:

BACK**NEXT**

Section A, Question 6

EXIT

The use of sprites (Director) or instances (Flash) in an animation

- A makes frame by frame animation easier.
- B helps keep the file size small.
- C restricts the use of bitmaps.
- D increases the file size.

Selected response:

BACK

NEXT

Times

Materials

Instructions

Structure

Section A

1 2

3 4

5 6

7 8

9 10

11 12

13 14

15 16

17 18

19 20

Section B

1 2

3 4

5 6

7 8

9 10

11 12

13

Section C

Intro

1 2

3 4

Section A, Question 7

EXIT

'Easing' is used in animation to

- A** restrict an object to simple movement.
- B** move objects along an irregular path.
- C** vary the speed of a tweened object.
- D** produce a smaller file for delivery.

Selected response:

BACK**NEXT**

Times

Materials

Instructions

Structure

Section A

1 2

3 4

5 6

7 8

9 10

11 12

13 14

15 16

17 18

19 20

Section B

1 2

3 4

5 6

7 8

9 10

11 12

13

Section C**Intro**

1 2

3 4

Section A, Question 8

EXIT

Which one of the following is used to detect whether a mouse has been clicked?

- A** an event handler
- B** a variable
- C** a function
- D** a method

Selected response:

BACK

NEXT

Times

Materials

Instructions

Structure

Section A

1 2

3 4

5 6

7 8

9 10

11 12

13 14

15 16

17 18

19 20

Section B

1 2

3 4

5 6

7 8

9 10

11 12

13

Section C

Intro

1 2

3 4

Section A, Question 9

EXIT

Times
Materials
Instructions
Structure

Section A

1 2
3 4
5 6
7 8
9 10
11 12
13 14
15 16
17 18
19 20

Section B

1 2
3 4
5 6
7 8
9 10
11 12
13

Section C

Intro

1 2
3 4

```
CompareNumbers(x,y)
```

```
  Set equalMessage to " is equal to "
```

```
  if x = y then
```

```
    Set equalMessage to " is not equal to "
```

```
  end if
```

```
  // Show the result
```

```
  print x + equalMessage + y
```

```
end
```

There is an error in the pseudocode above because

- A** the variable equalMessage has not been declared.
- B** the word 'result' is reserved.
- C** there is a fault in the syntax.
- D** there is a fault in the logic.

Selected response:

BACK

NEXT

Section A, Question 10

EXIT

In scripting, functions are used because

- A** they make logical decisions.
- B** they loop based on logical decisions.
- C** they force codes to be used once only.
- D** they allow the same code to be used repeatedly.

Selected response:

BACK**NEXT**

Times

Materials

Instructions

Structure

Section A

1 2

3 4

5 6

7 8

9 **10**

11 12

13 14

15 16

17 18

19 20

Section B

1 2

3 4

5 6

7 8

9 10

11 12

13

Section C**Intro**

1 2

3 4

Section A, Question 11

EXIT

The pseudocode statement

$$(3 * 4 + 2) < 13$$

evaluates to

- A 1
- B true
- C false
- D 5

Selected response:

BACK

NEXT

Times

Materials

Instructions

Structure

Section A

1 2

3 4

5 6

7 8

9 10

11 12

13 14

15 16

17 18

19 20

Section B

1 2

3 4

5 6

7 8

9 10

11 12

13

Section C

Intro

1 2

3 4

Section A, Question 12

EXIT

The value of a local variable

- A** can only be determined at runtime.
- B** cannot be changed if it is out of scope.
- C** can be accessed from anywhere in the code.
- D** can be accessed using a get property command.

Selected response:

BACK

NEXT

Times

Materials

Instructions

Structure

Section A

1 2

3 4

5 6

7 8

9 10

11 12

13 14

15 16

17 18

19 20

Section B

1 2

3 4

5 6

7 8

9 10

11 12

13

Section C

Intro

1 2

3 4

Section A, Question 13

EXIT

peter piper picked a **peck** of
pickled peppers

Which of the following HTML code snippets will render the above sample correctly?

- A** `<p>peter piper picked a peck of pickled </p>peppers`
- B** `<p>peter piper picked a
peck of
pickled peppers</p>`
- C** `<p>peter piper picked a peck of
pickled peppers</p>`
- D** `<p>peter piper picked a peck
 of
pickled peppers</p>`

Selected response:

BACK

NEXT

Times

Materials

Instructions

Structure

Section A

1 2

3 4

5 6

7 8

9 10

11 12

13 14

15 16

17 18

19 20

Section B

1 2

3 4

5 6

7 8

9 10

11 12

13

Section C

Intro

1 2

3 4

Section A, Question 14

EXIT

When testing web content an important task involves checking that

- A** an email address is included.
- B** the site will be ready by the release date.
- C** the site works in a range of browsers.
- D** content can be viewed on a mobile phone.

Selected response:

BACK**NEXT**

Times
Materials
Instructions
Structure

Section A

1 2
3 4
5 6
7 8
9 10
11 12
13 **14**
15 16
17 18
19 20

Section B

1 2
3 4
5 6
7 8
9 10
11 12
13

Section C**Intro**

1 2
3 4

Section A, Question 15

EXIT

Adding

```
<a href = "mysite/images/for_sale/puppy.jpg"> </a>
```

to your code will

- A** cause all occurrences of the word puppy to appear as a header.
- B** insert a paragraph called puppy into the web page.
- C** insert an image into the web page.
- D** create a link on the web page.

Selected response:

BACK

NEXT

Times

Materials

Instructions

Structure

Section A

1 2

3 4

5 6

7 8

9 10

11 12

13 14

15 16

17 18

19 20

Section B

1 2

3 4

5 6

7 8

9 10

11 12

13

Section C

Intro

1 2

3 4

Section A, Question 16

EXIT

On the web page *index.html* is a link to another page with the URL *../extras/see_also.html*. Which one of the following is true?

- A** The folder *extras* is on the same level as the folder containing *index.html*.
- B** The folder *extras* is in the same folder as the file *index.html*.
- C** The reference to the file *see_also.html* is unresolvable.
- D** The file *see_also.html* is in the same folder as the file *index.html*.

Selected response:

BACK

NEXT

Times

Materials

Instructions

Structure

Section A

1 2

3 4

5 6

7 8

9 10

11 12

13 14

15 16

17 18

19 20

Section B

1 2

3 4

5 6

7 8

9 10

11 12

13

Section C

Intro

1 2

3 4

Section A, Question 17

EXIT

Cascading Style Sheets should be used

- A** when there is no alternative in the HTML code.
- B** to separate content from design.
- C** if importing external data.
- D** when sourcing images.

Selected response:

BACK**NEXT**

Times
Materials
Instructions
Structure

Section A

1 2
3 4
5 6
7 8
9 10
11 12
13 14
15 16
17 18
19 20

Section B

1 2
3 4
5 6
7 8
9 10
11 12
13

Section C**Intro**

1 2
3 4

Section A, Question 18

EXIT

In general, when writing for the web you should

- A** use a big font for large amounts of text.
- B** summarise large amounts of text.
- C** use large amounts of text.
- D** only use point form.

Selected response:

BACK**NEXT**

Times
Materials
Instructions
Structure

Section A

1 2
3 4
5 6
7 8
9 10
11 12
13 14
15 16
17 **18**
19 20

Section B

1 2
3 4
5 6
7 8
9 10
11 12
13

Section C**Intro**

1 2
3 4

Section A, Question 19

EXIT

To explain a scientific concept using text, the style is usually

- A active.
- B passive.
- C complex.
- D subjective.

Selected response:

BACK

NEXT

Times

Materials

Instructions

Structure

Section A

1 2

3 4

5 6

7 8

9 10

11 12

13 14

15 16

17 18

19 20

Section B

1 2

3 4

5 6

7 8

9 10

11 12

13

Section C

Intro

1 2

3 4

Section A, Question 20

EXIT

Which writing style is most appropriate for a technical article published on the WWW?

- A** first person
- B** second person
- C** third person
- D** fourth person

Selected response:

End Section A

BACK **NEXT**

Times
Materials
Instructions
Structure

Section A

1 2
3 4
5 6
7 8
9 10
11 12
13 14
15 16
17 18
19 **20**

Section B

1 2
3 4
5 6
7 8
9 10
11 12
13

Section C

Intro

1 2
3 4