



# Victorian Certificate of Education

## 2008

SUPERVISOR TO ATTACH PROCESSING LABEL HERE

### STUDENT NUMBER

Figures

Words


Letter

--

# GEOGRAPHY

## Written examination

**Friday 14 November 2008**

**Reading time: 3.00 pm to 3.15 pm (15 minutes)**

**Writing time: 3.15 pm to 5.15 pm (2 hours)**

## QUESTION AND ANSWER BOOK

### Structure of book

<i>Number of questions</i>	<i>Number of questions to be answered</i>	<i>Number of marks</i>
5	5	60

- Students are permitted to bring into the examination room: pens, pencils, highlighters, erasers, sharpeners, rulers, coloured water-based pens and markers.
- Students are NOT permitted to bring into the examination room: blank sheets of paper and/or white out liquid/tape.
- No calculator is allowed in this examination.

### Materials supplied

- Question and answer book of 11 pages.
- A data book.

### Instructions

- Write your **student number** in the space provided above on this page.
- All written responses must be in English.

### At the end of the examination

- You may keep the data book.

**Students are NOT permitted to bring mobile phones and/or any other unauthorised electronic devices into the examination room.**

**This page is blank**

**Instructions**

Answer **all** questions in the spaces provided. Refer to the data book as indicated.

**Question 1**

*Use Figure 1 on pages 2 and 3 of the data book when responding to Question 1.*

- a. Name the drainage division which has the highest percentage of Australia's total water runoff.

1 mark

- b. 'In Australia, the percentage of total water runoff in a drainage division closely reflects its population distribution.' Provide one piece of evidence supporting this statement **and** one piece of evidence rejecting this statement.

- i. Supporting evidence

---

---

---

---

- ii. Rejecting evidence

---

---

---

---

4 marks

Total 5 marks

**TURN OVER**

**Question 2**

*Use Figure 2 on pages 4 and 5 of the data book when responding to Question 2.*

- a.** Name one significant natural or physical geographic characteristic of the Murray-Darling Basin that makes it a unique region of Australia.

---

---

1 mark

- b.** Describe the distribution of fruit and vegetable growing in the Murray-Darling Basin.

---

---

---

---

---

---

---

3 marks

- c.** A new area of fruit and rice production was planned for the region between Broken Hill and Lake Menindee in the 2000–2007 period. With reference to the data provided, discuss the likely sustainability of this plan.

---

---

---

---

---

---

---

---

---

---

4 marks

- Select **one** of the above strategies. Evaluate how effectively this strategy manages, or could manage, water resources for one location within the Murray-Darling Basin.

---

---

---

---

---

---

Evaluate this statement with reference to one specific conflict within the Murray-Darling Basin you have studied.

[illegible]

www.theallpapers.com

**Question 3**

Identify a local resource for which you have collected data in the field.

---

---

- a. Classify and justify your classification of this resource.

---

---

---

---

2 marks

- b. Describe the local resource you studied in your fieldwork, using each of the following geographic characteristics.

- Location within its region

---

---

---

- Distance

---

---

---

- Scale

---

---

---

3 marks

- c. Identify a management policy that is a response to a negative impact on either people or the environment as a result of the use of this resource.

---

---

1 mark

- d.** Evaluate the future sustainability of this management response.

---

---

---

---

2 marks

Total 8 marks

**TURN OVER**

**Question 4**

*Use Figure 3 on pages 6 and 7 of the data book when responding to Question 4.*

- a.** Quantify Mali's infant mortality rate and total fertility rate.

Infant mortality rate \_\_\_\_\_

Total fertility rate \_\_\_\_\_

1 mark

- b.** Describe the overall pattern shown on the scattergraph, making specific reference to the countries located in groups A and B.

---

---

---

---

---

---

---

---

---

---

4 marks

- c.** Define the term 'replacement rate'.

---

---

1 mark

- d.** What is the significance, for a country's future population, of a replacement rate below 2.1?

---

---

---

---

2 marks

- e. With reference to one country you have studied, evaluate the importance of two factors contributing to changes in its population. Indicate which factor you consider to be the more significant.

---

---

---

---

---

---

---

---

4 marks

- f. 'Trends of declining infant mortality rates and declining birth rates, together with rising life expectancies, are producing an ageing global population.'

Discuss this statement in relation to one country's population policy you have studied.

In your answer you may use the country you evaluated in **part e**.

---

---

---

---

---

---

---

---

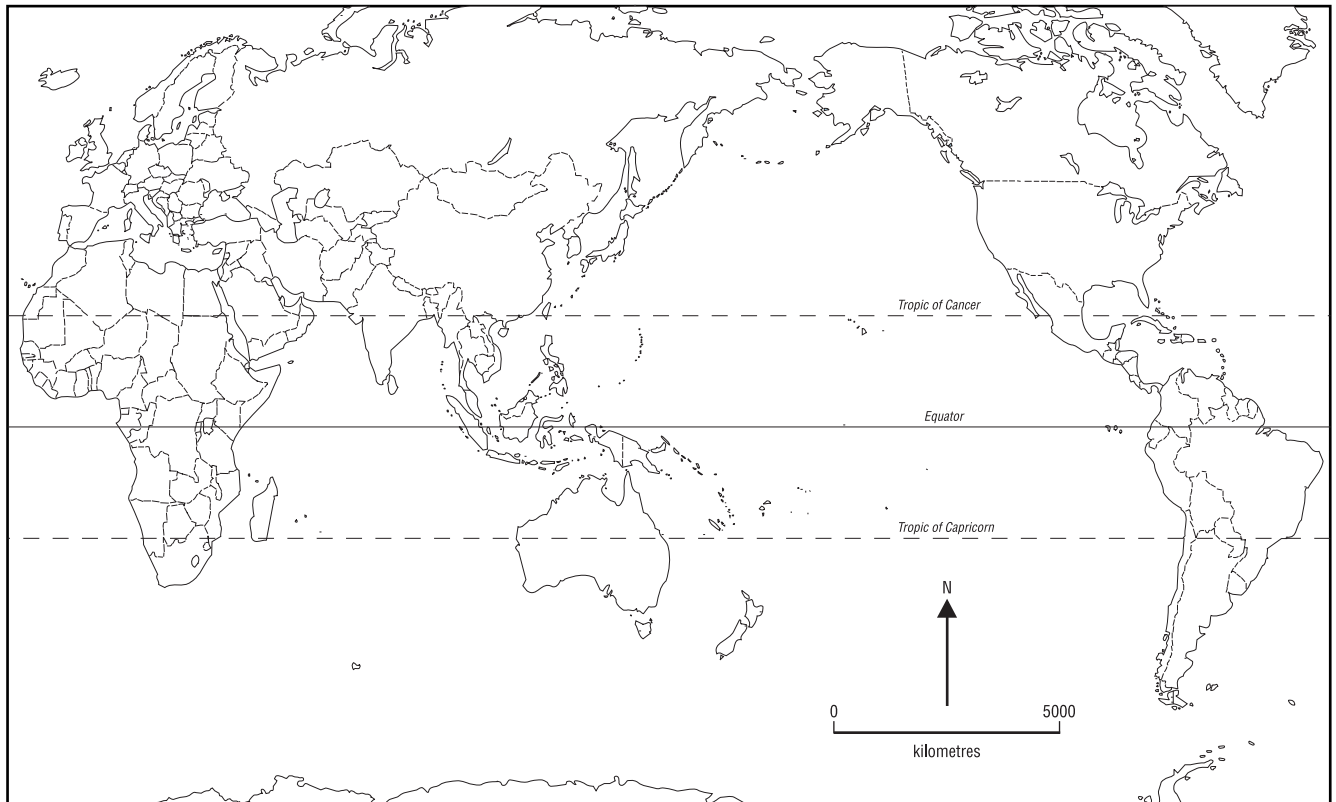
4 marks

Total 16 marks

**TURN OVER**

**Question 5**

- a. Use the outline map provided below to map the distribution of a global phenomenon you have studied. Do not use the phenomenon of human population.



3 marks

- b. Discuss two factors which explain the distribution of your mapped global phenomenon.

---

---

---

---

---

---

---

---

4 marks

- c. Locate and name on the map one place where your mapped global phenomenon is having either a positive impact on people or a negative impact on the environment.  
On your map or its key, clearly indicate whether the impact is positive on people or negative on the environment.

1 mark

- d. Describe the impact of the global phenomenon at the location you have mapped in **part c**.

---

---

---

---

2 marks

- e. Outline and justify an effective management strategy to deal with the impact of the global phenomenon you described in your answer to **part d**.

---

---

---

---

---

---

---

---

4 marks

Total 14 marks



## **Victorian Certificate of Education 2008**

# **GEOGRAPHY**

## **Written examination**

**Friday 14 November 2008**

**Reading time: 3.00 pm to 3.15 pm (15 minutes)**

**Writing time: 3.15 pm to 5.15 pm (2 hours)**

### **DATA BOOK**

#### **Directions to students**

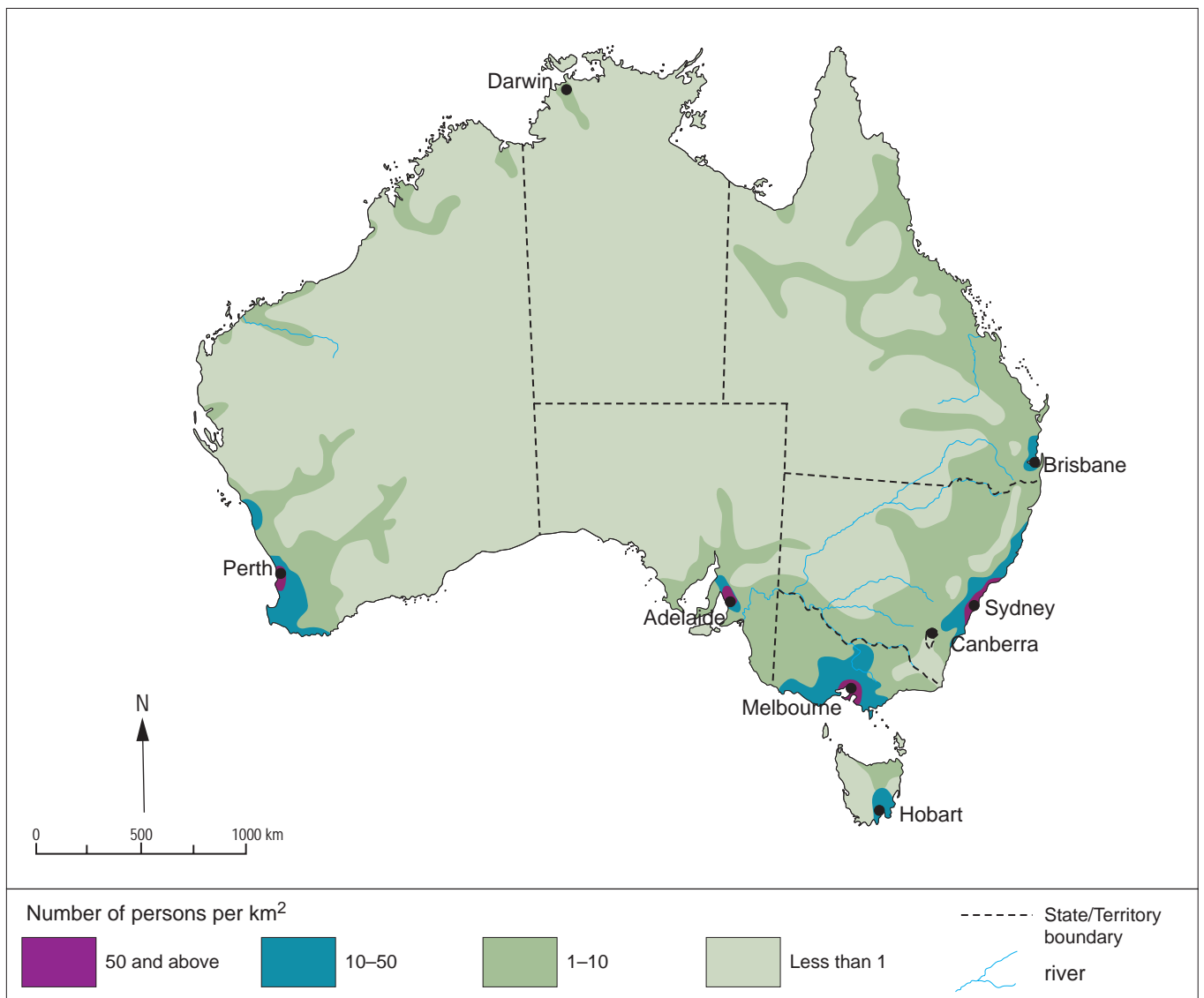
- A question and answer book is provided with this data book.
- Refer to the data in this book for each question as indicated in the question and answer book.
- The data contained in this book is drawn from current real world case studies.

**Students are NOT permitted to bring mobile phones and/or any other unauthorised electronic devices into the examination room.**

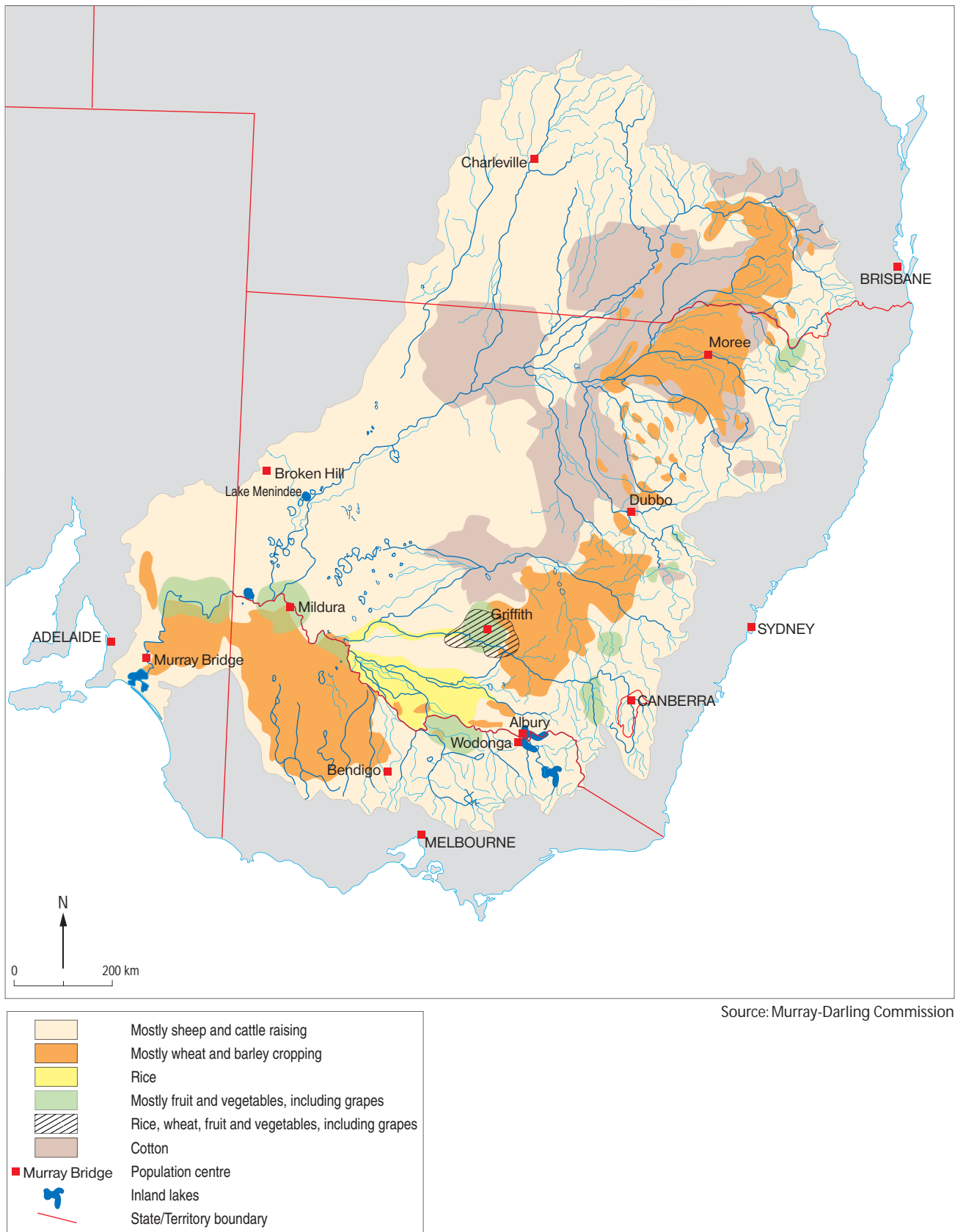
Due to copyright restriction,  
this material is not supplied.

**Figure 1a: Australia's drainage divisions**

Source: BtN Atlas

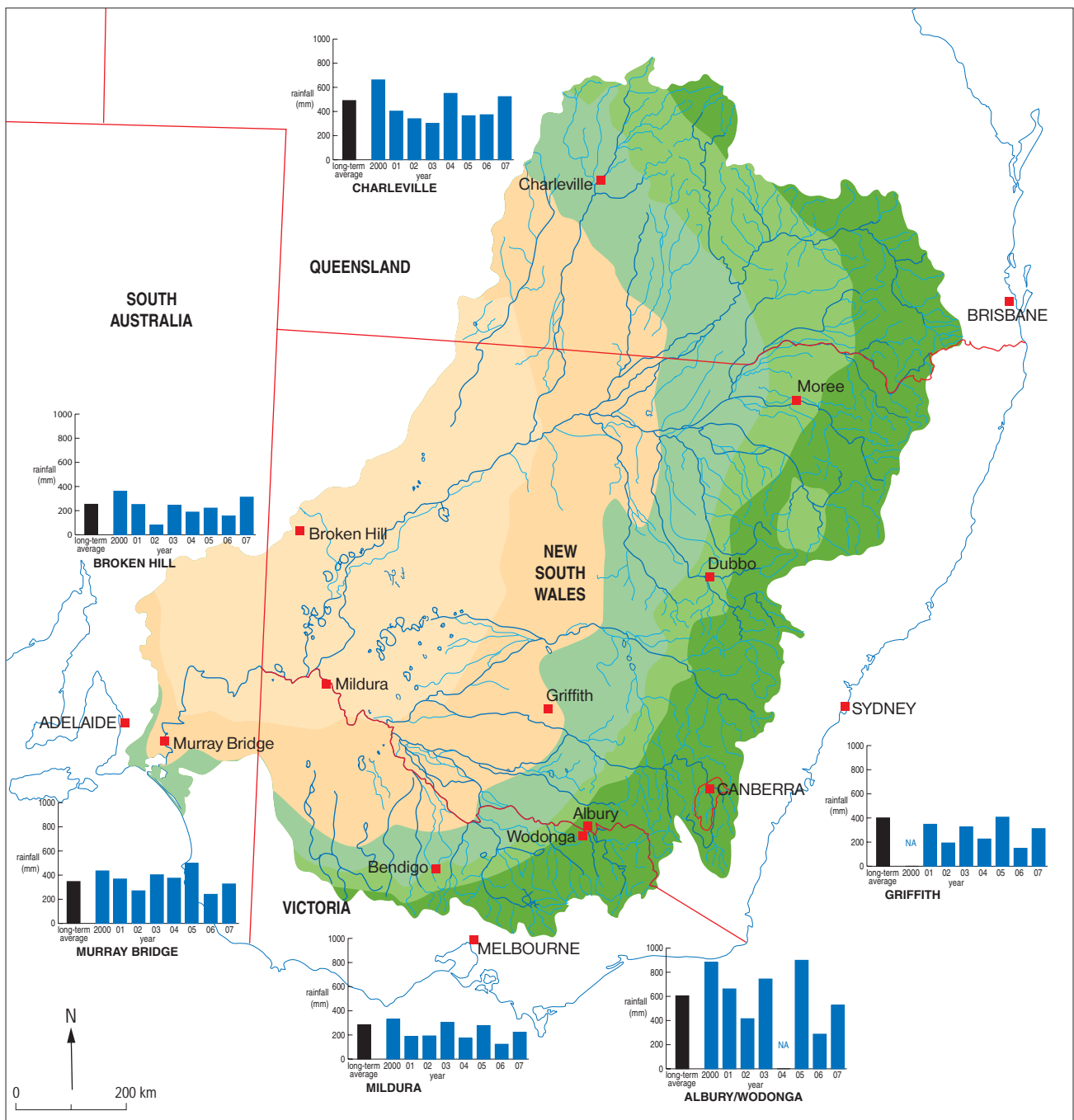


**Figure 1b: Australia's population distribution**



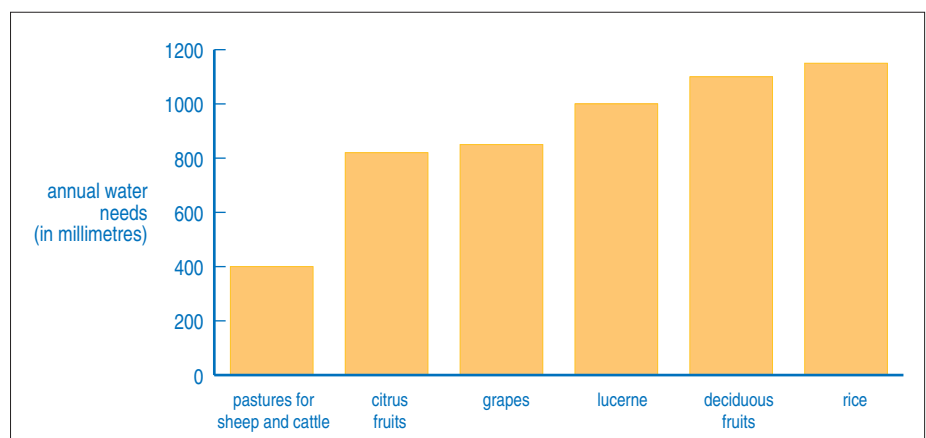
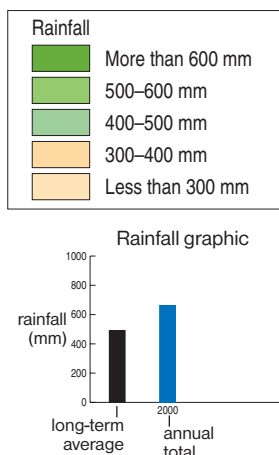
Source: Murray-Darling Commission

**Figure 2a: Generalised land use of the Murray-Darling Basin**



**Figure 2b: Rainfall patterns of the Murray-Darling Basin**

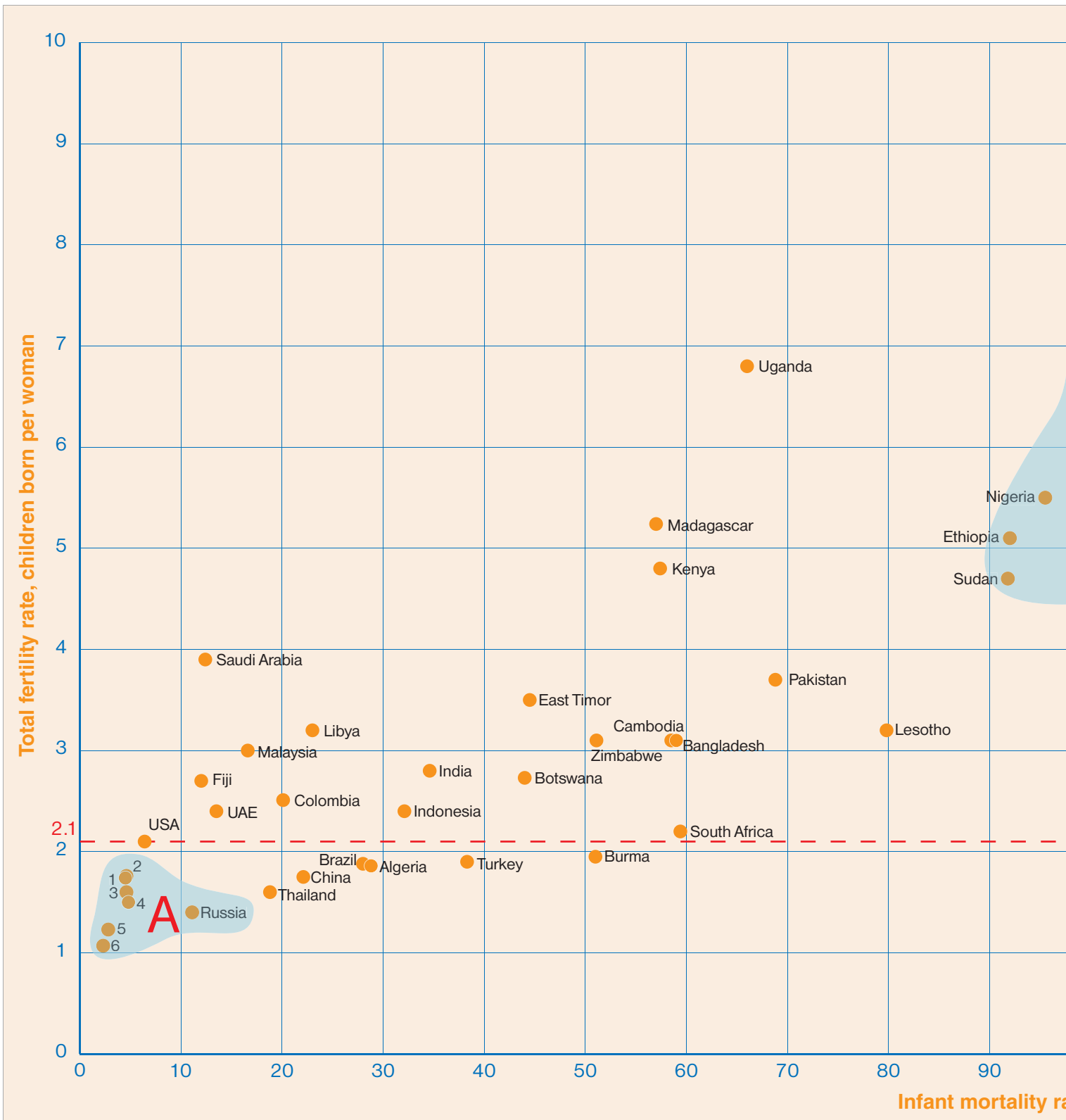
Source: Bureau of Meteorology



**Figure 2c: Water needs for selected crops**

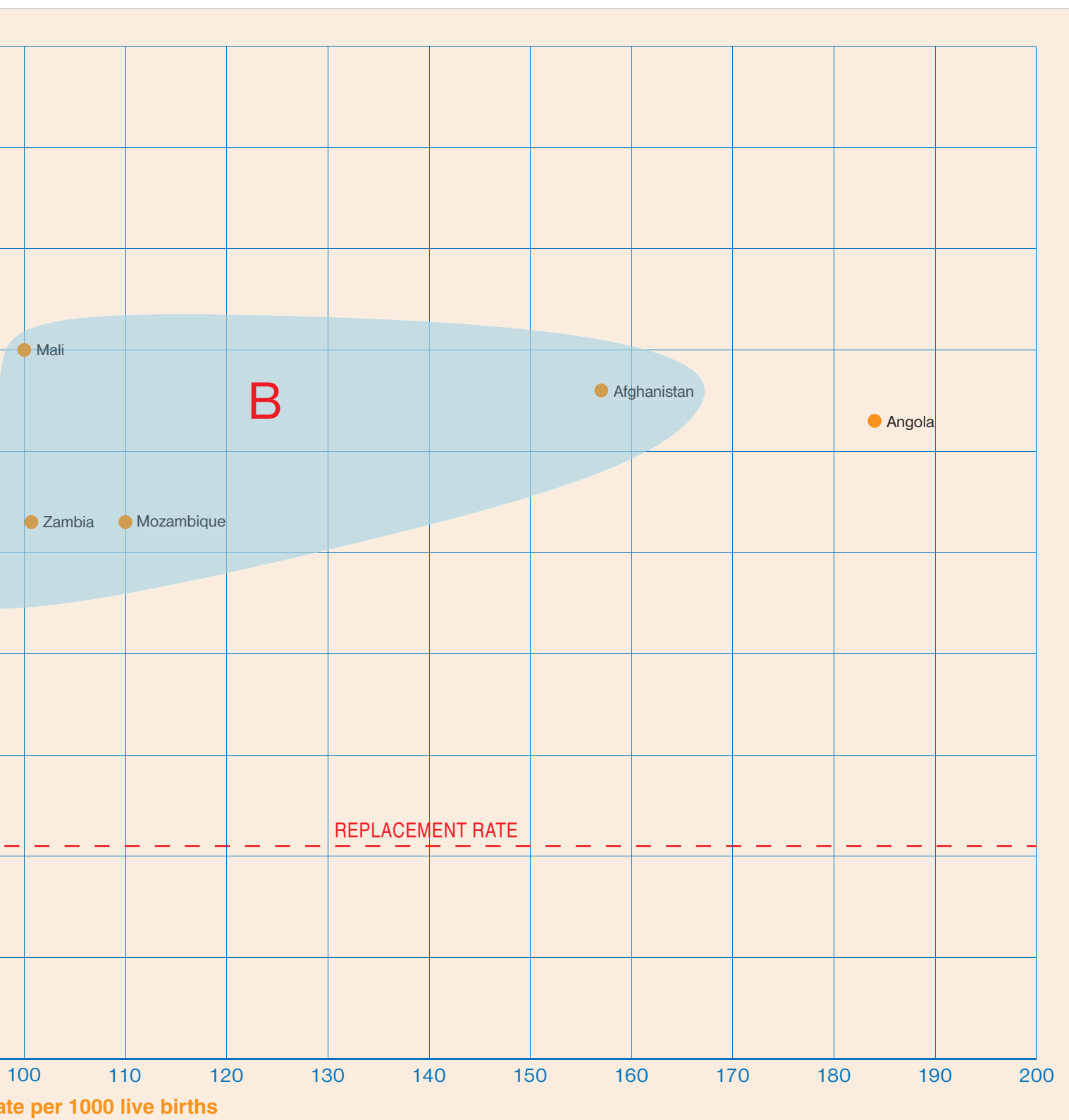
[www.theallpapers.com](http://www.theallpapers.com)

# Figure 3 | Human Population



- 1 Denmark
- 2 Australia
- 3 Canada
- 4 European Union countries
- 5 Japan
- 6 Singapore

Figure 3: Infant mortality rates and total fertility rates for selected countries, 2007



Source: CIA. *The World Factbook*

