



UNIVERSITY OF CAMBRIDGE INTERNATIONAL EXAMINATIONS
Cambridge International Level 3 Pre-U Certificate
Principal Subject

GEOGRAPHY

9768/04

Paper 4 Research Topic

May/June 2012

INSERT

1 hour 30 minutes

READ THESE INSTRUCTIONS FIRST

This Insert contains all the Figures referred to in the Question Paper.

This document consists of **9** printed pages and **3** blank pages.

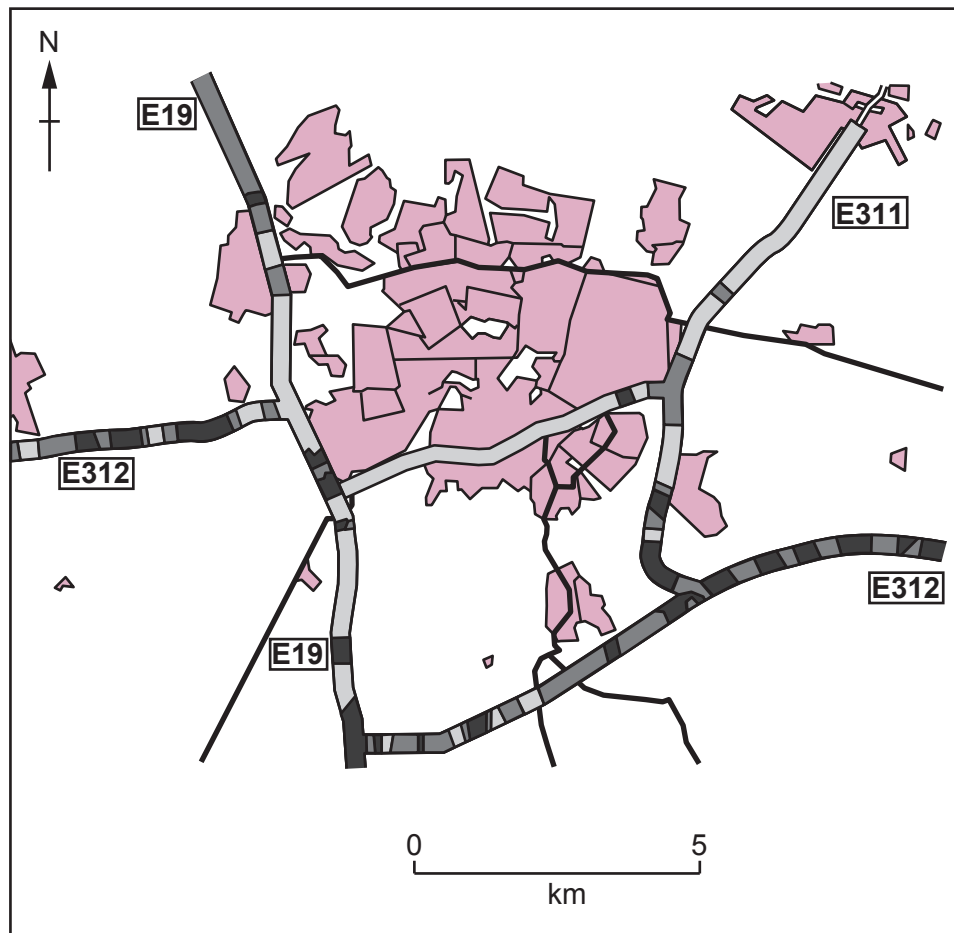


Content removed - copyright restrictions. Fig. 1 for Question 1

Content removed - copyright restrictions. Fig. 2 for Question 1

Fig. 3 for Question 2

The probability of fog on selected routes serving the city of Breda, the Netherlands



Key

probability of fog



high



medium



low

— highway

— road

— urban area

E312 road number

Fig. 4 for Question 5

Reported catches of polar bears in Baffin Bay and East Greenland, 1996 – 2003

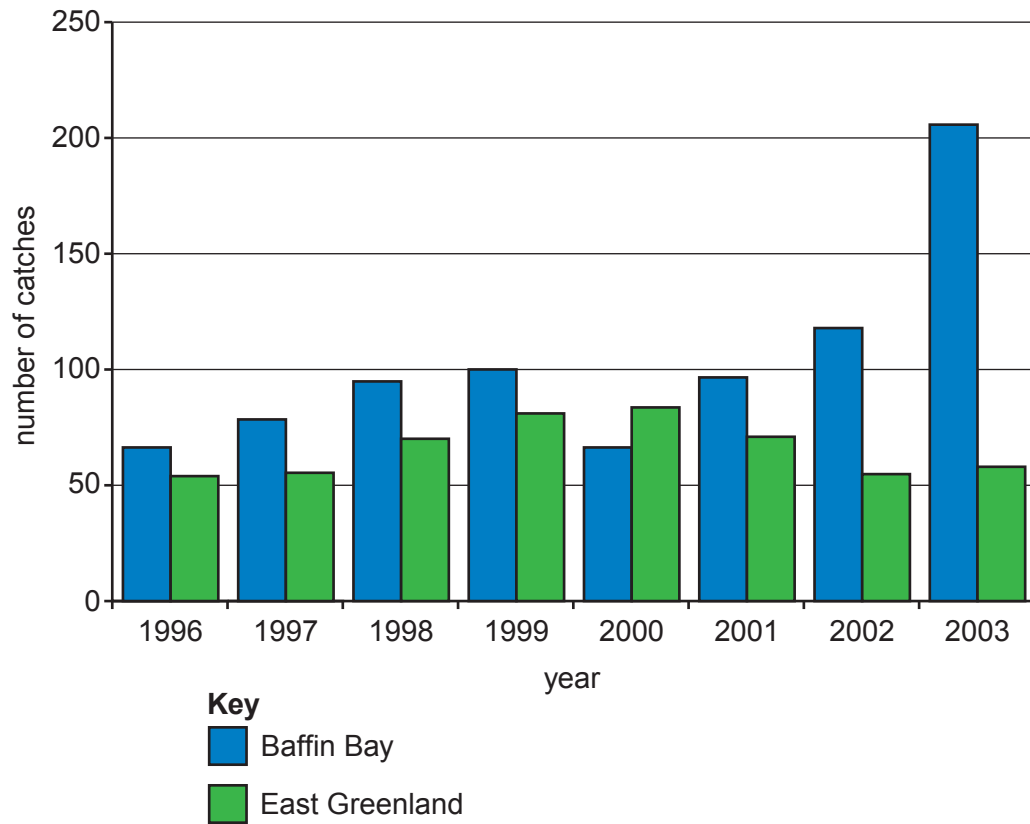
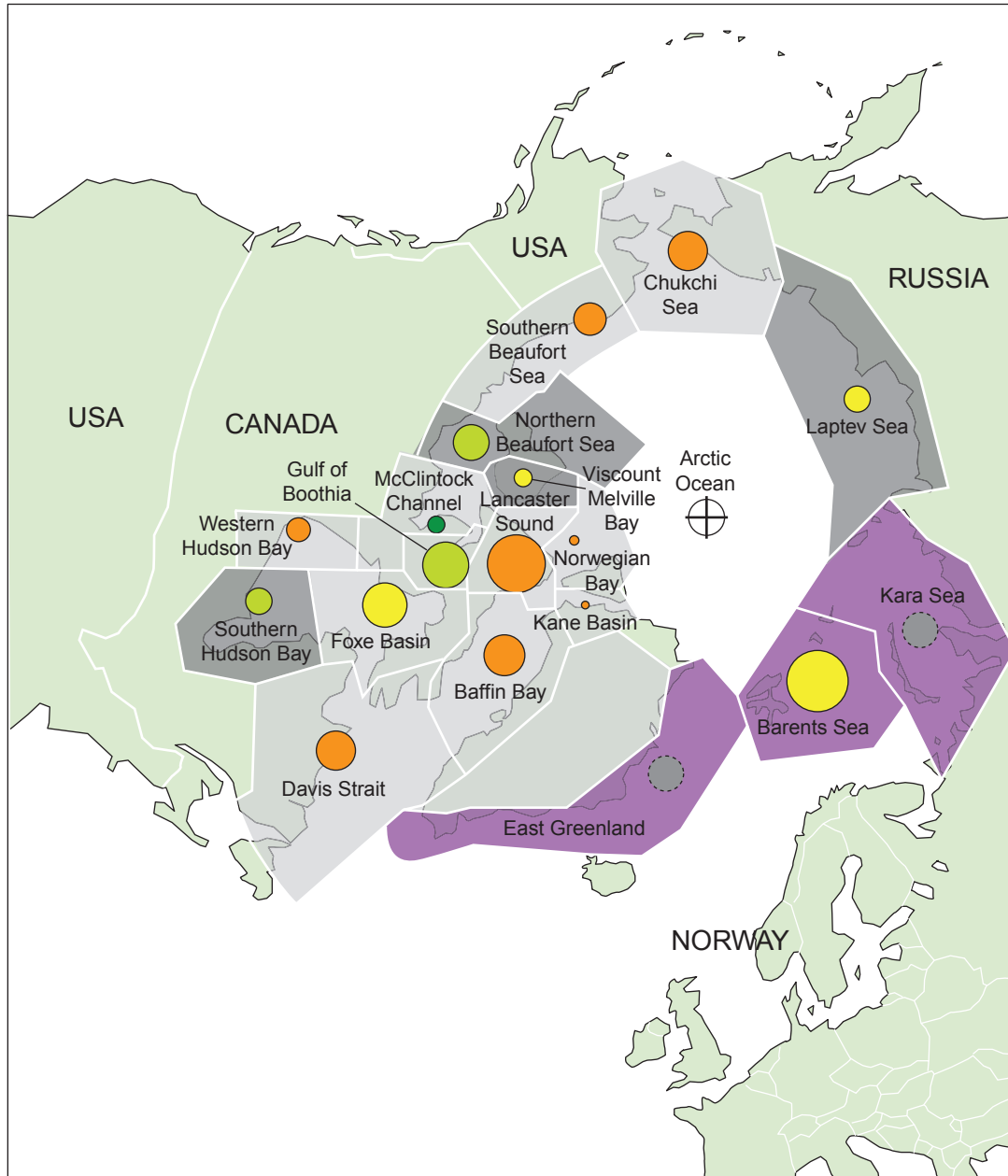
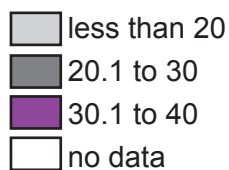


Fig. 5 for Question 5

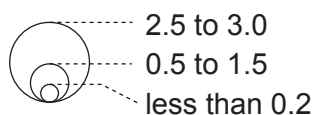
Polar bear distribution and pollution in the Arctic

**Key****PCB concentration in polar bear fat samples**

Micrograms per gram of fat weight

**Population trends**

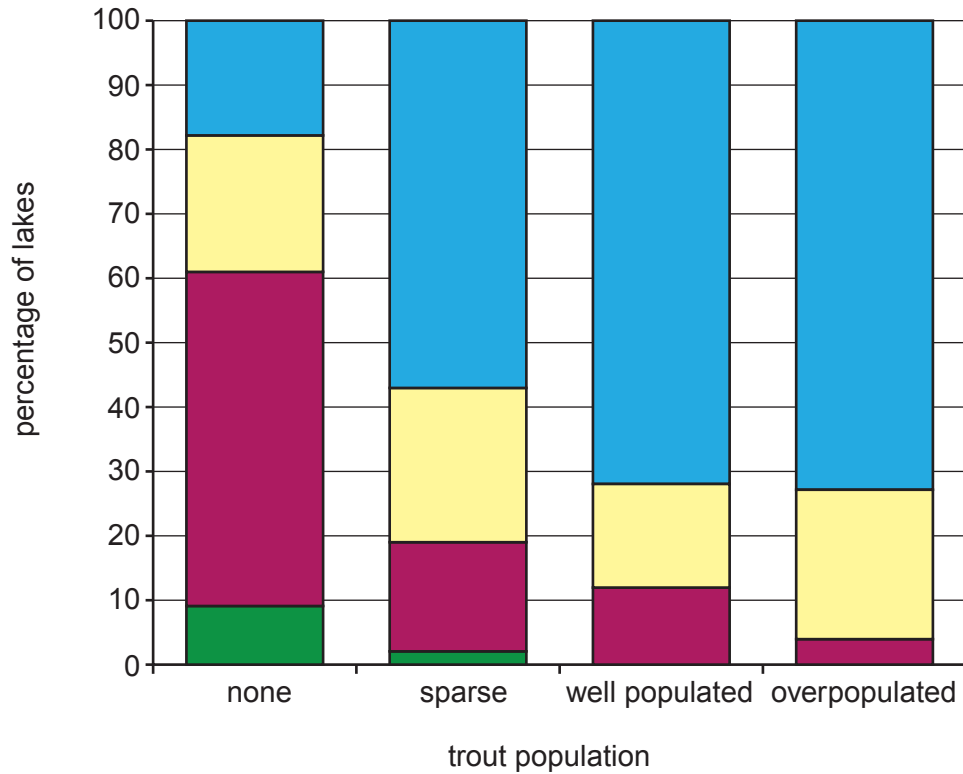
⊕ North pole

Population estimates (000's)

● Unknown

Fig. 6 for Question 6

The populations of trout and pH values for selected lakes in Southern Norway in 1972



Key

pH value

■ > 5.51

■ 5.01 – 5.50

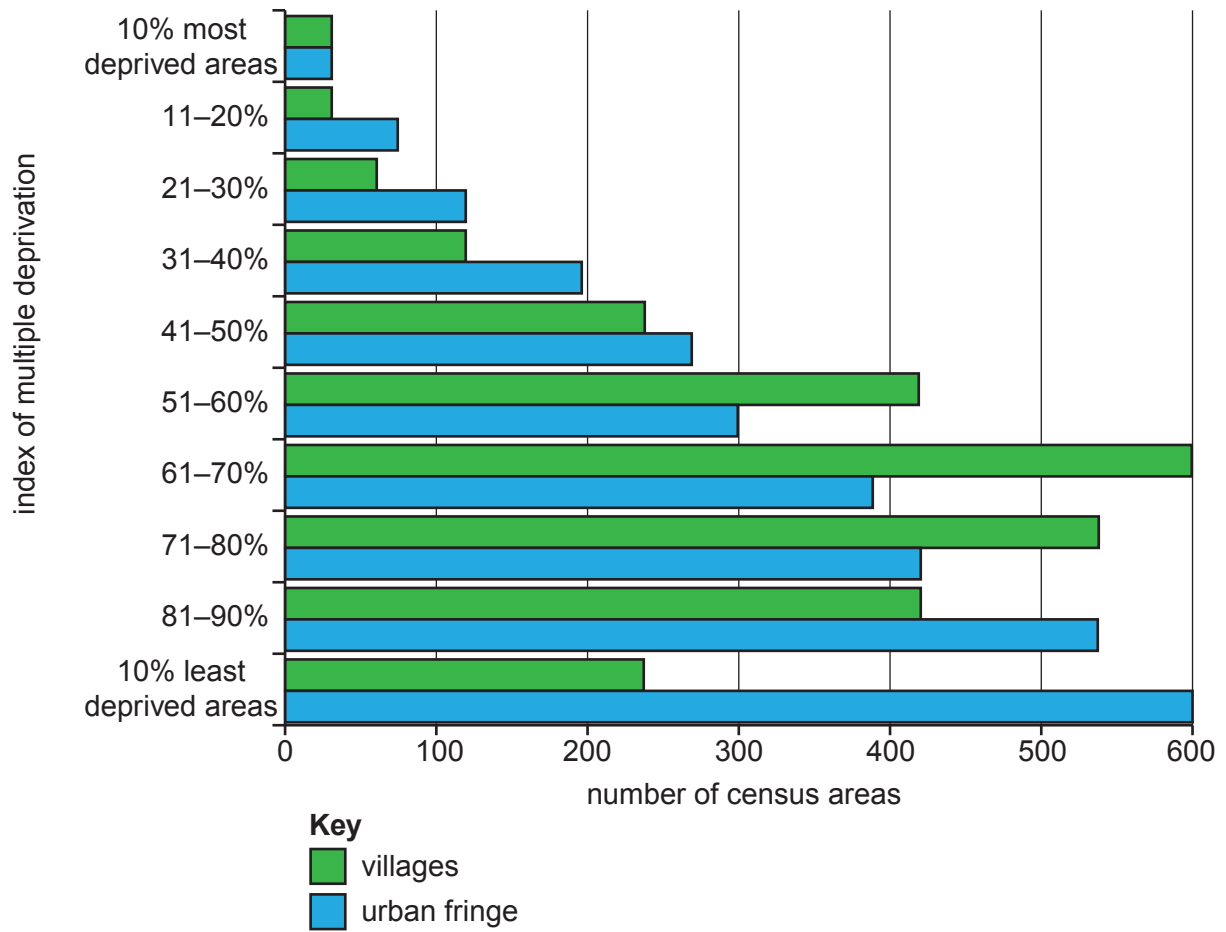
■ 4.51 – 5.00

■ 4.00 – 4.50

BLANK PAGE

Fig. 7 for Question 9

The index of multiple deprivation for selected villages and for selected areas in the urban fringe in England in 2007



Figs 8A, 8B and 8C for Question 9

Deprivation indicators for Eastern and Southern England in 2007

Employment deprivation

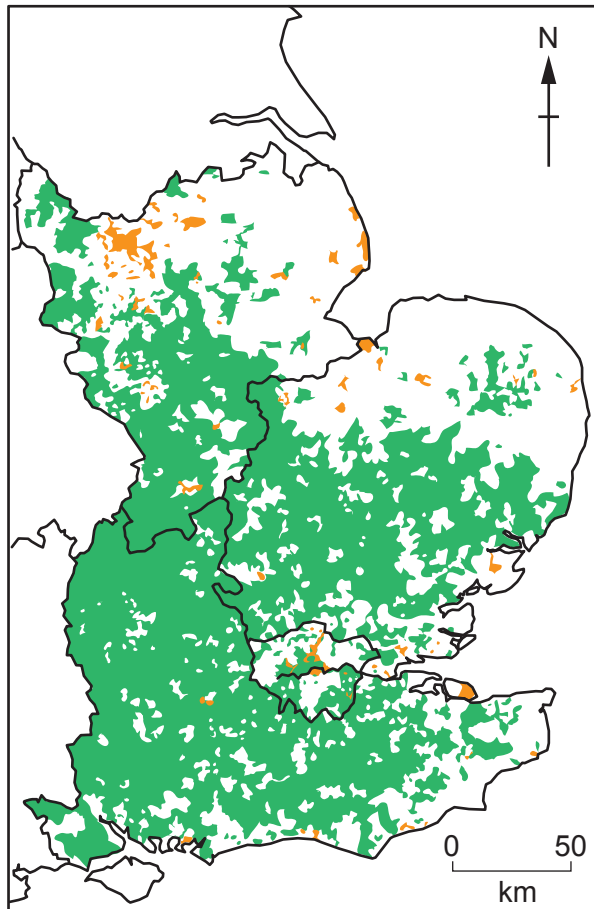


Fig. 8A

Health deprivation

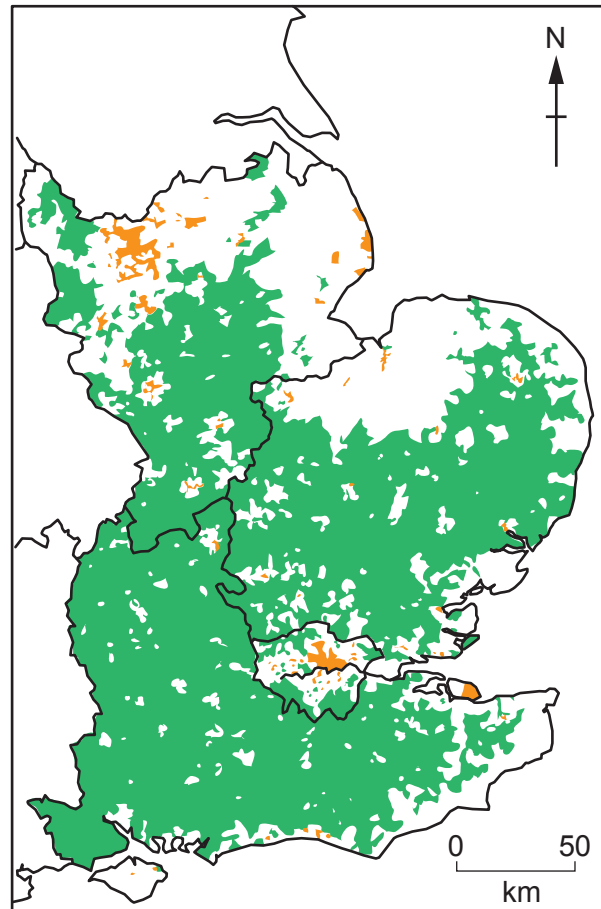


Fig. 8B

Key

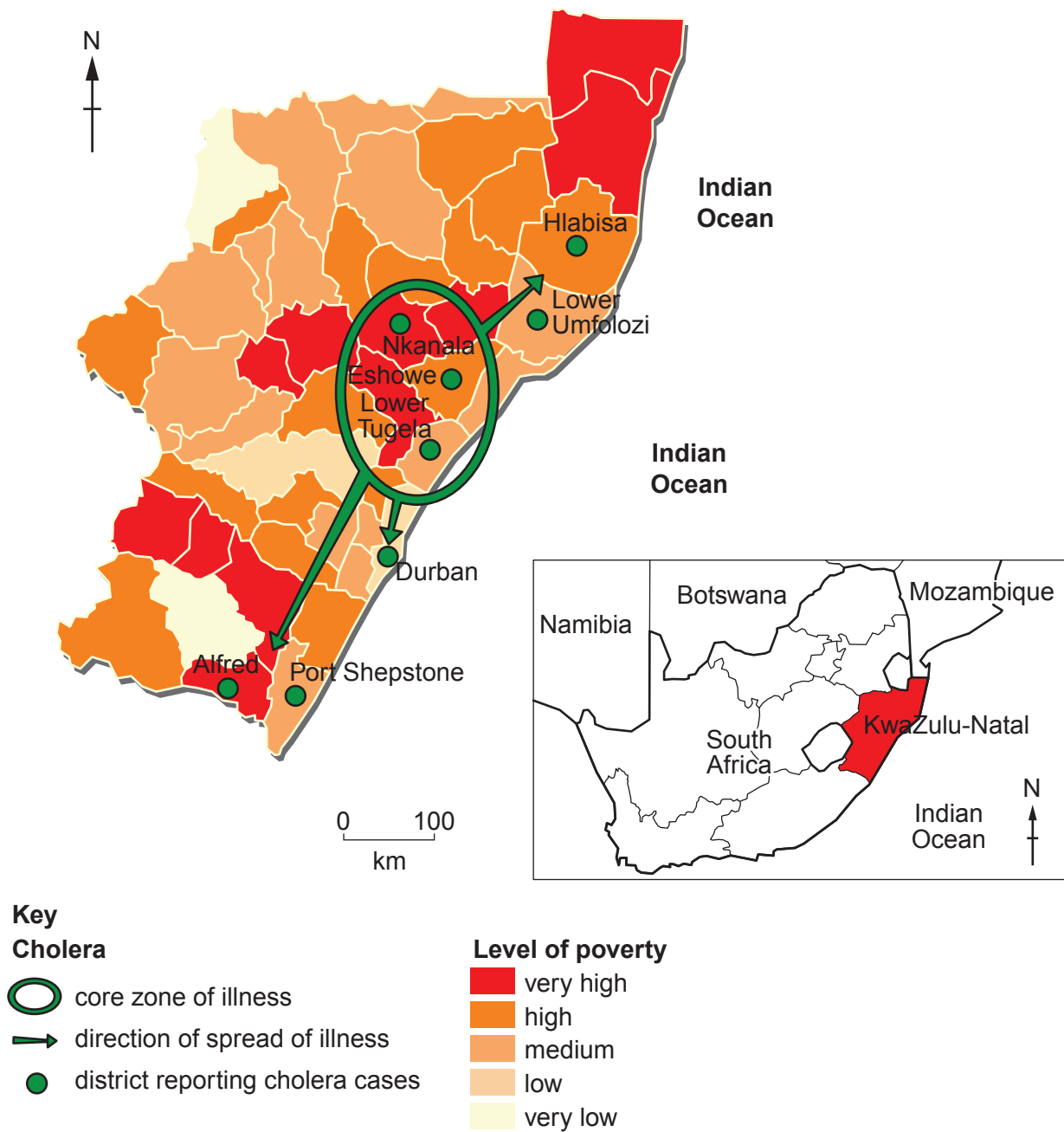
- least deprived 25%
- most deprived 25%



Fig. 8C

Fig. 9 for Question 10

Poverty and cholera in the province of KwaZulu-Natal, South Africa, in January 2001



Permission to reproduce items where third-party owned material protected by copyright is included has been sought and cleared where possible. Every reasonable effort has been made by the publisher (UCLES) to trace copyright holders, but if any items requiring clearance have unwittingly been included, the publisher will be pleased to make amends at the earliest possible opportunity.

University of Cambridge International Examinations is part of the Cambridge Assessment Group. Cambridge Assessment is the brand name of University of Cambridge Local Examinations Syndicate (UCLES), which is itself a department of the University of Cambridge.