



UNIVERSITY OF CAMBRIDGE INTERNATIONAL EXAMINATIONS  
Cambridge International Level 3 Pre-U Certificate  
Principal Subject

---

**GEOGRAPHY**

**9768/01**

Paper 1 Geographical Issues

**May/June 2010**

INSERT

**2 hours 30 minutes**

---

**READ THESE INSTRUCTIONS FIRST**

This Insert contains all the Figures and the Table referred to in the questions.

---

This document consists of **12** printed pages and **4** blank pages.





Fig. 1 for Question 1

The distribution of earthquakes by depth of focus on the west coast of South America, 1990–2006

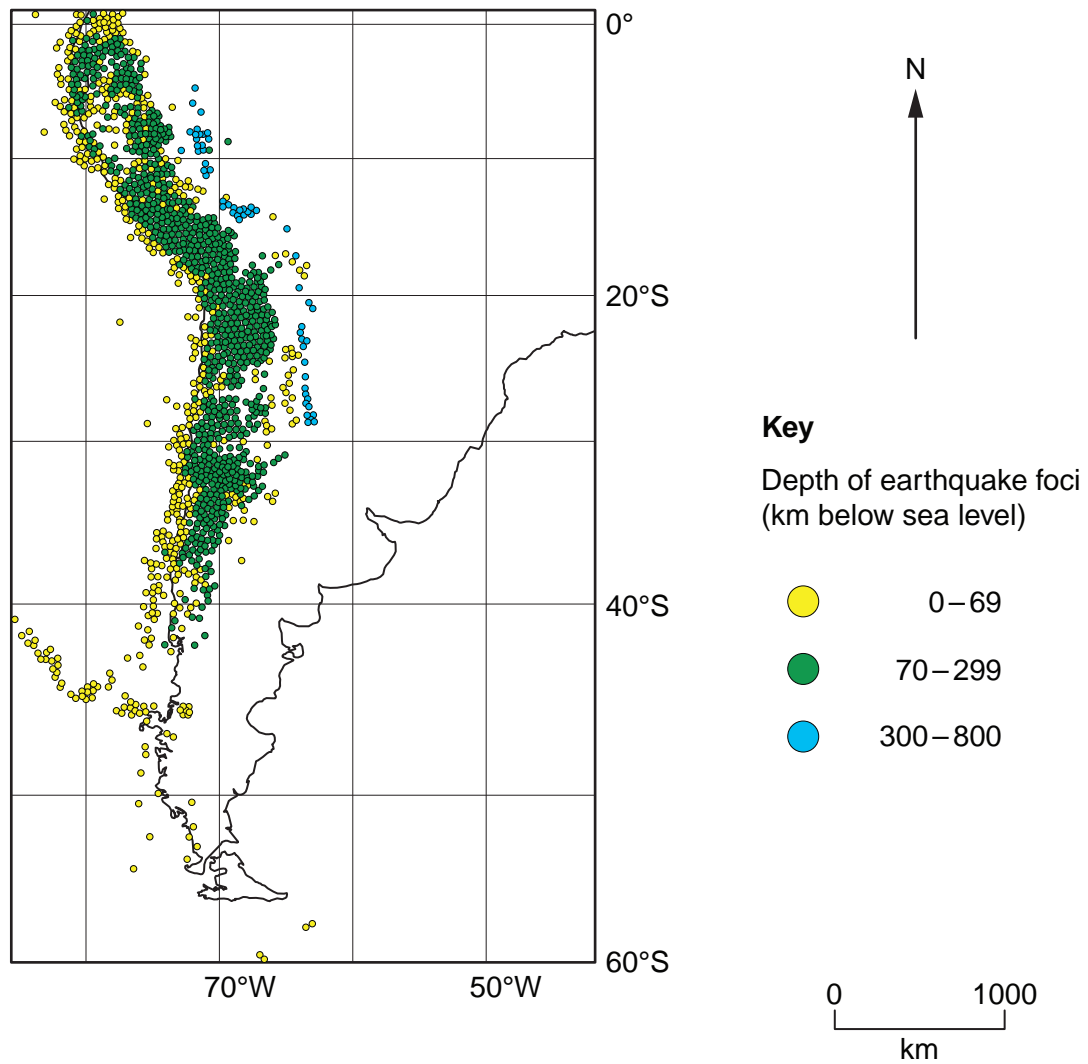


Fig. 2 for Question 2

## The spatial distribution of tornado activity in the USA, 1953–2004

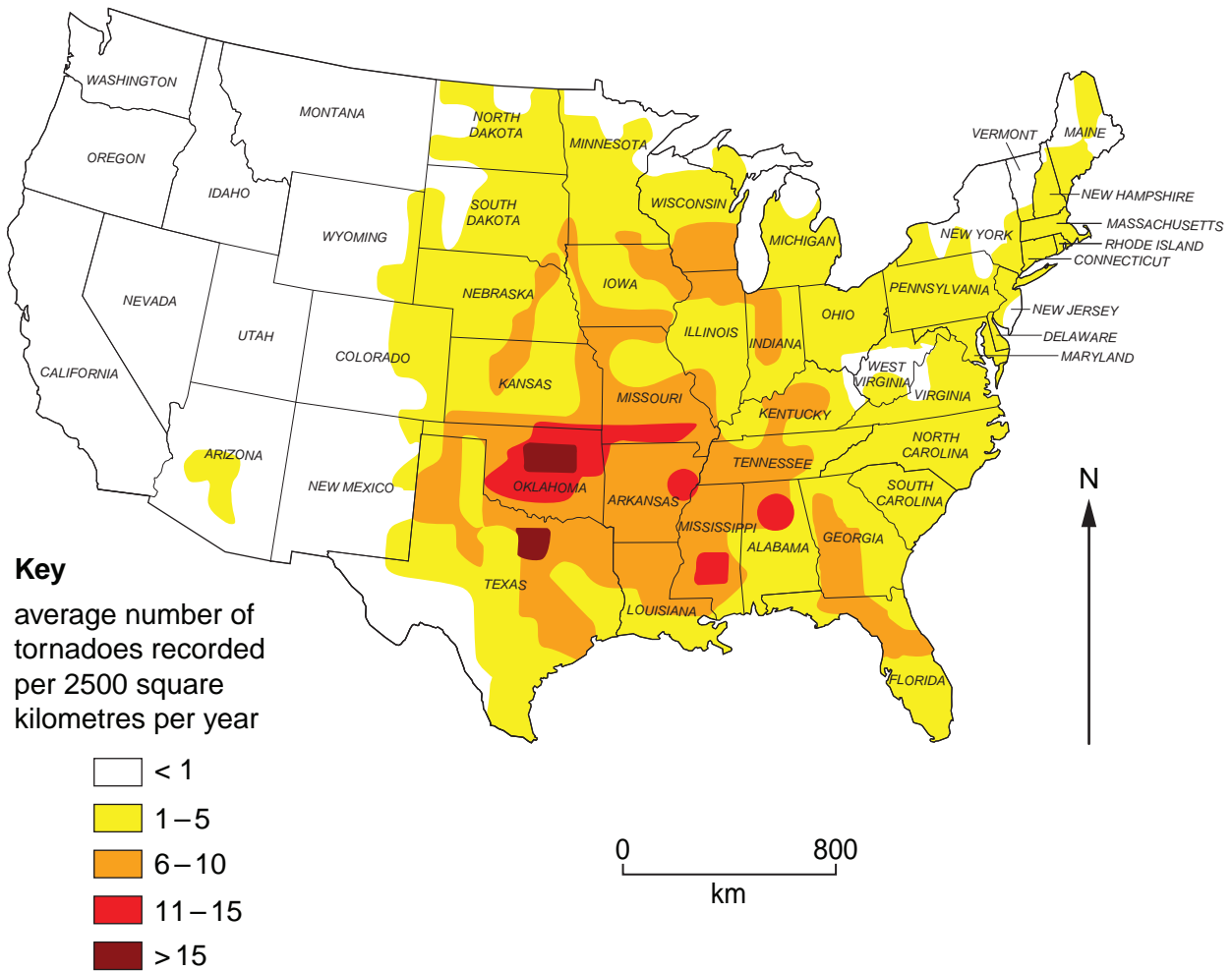
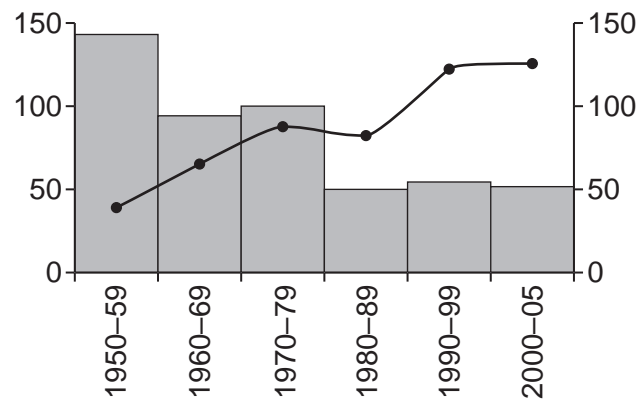


Fig. 3 for Question 2

Average annual number of tornadoes and the average annual number of deaths from tornadoes in the USA, 1950–2005

**Key**

● average annual number of tornadoes

■ average annual number of deaths from tornadoes

Fig. 4 for Question 3

River regimes for the Murray-Darling river in SE Australia for recent years compared to the long-term average

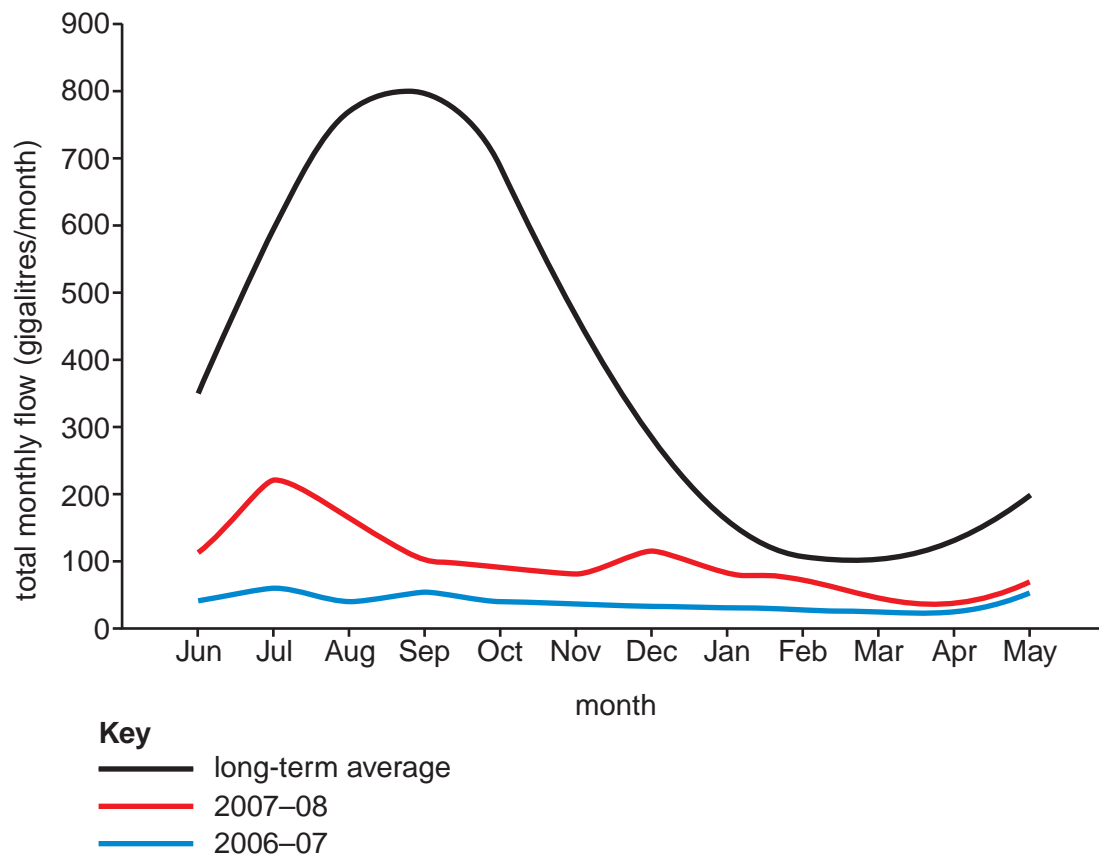


Table 1 for Question 3

**Average monthly rainfall and the mean temperature variation from the average in the Murray-Darling river basin, 1995–2007**

<b>year</b>	<b>average monthly rainfall (mm)</b>	<b>mean temperature variation from 1961–1990 average (°C)</b>
1995	47	0.00
1996	46	–0.30
1997	38	+0.50
1998	48	+0.40
1999	49	+0.20
2000	48	+0.25
2001	34	+0.45
2002	23	+0.80
2003	38	+0.60
2004	40	+0.50
2005	38	+1.00
2006	23	+0.85
2007	40	+1.15

Fig. 5 for Question 4

Location of reported crimes and home location of convicted criminals in the borough of Southwark, London, October 2006 – March 2007

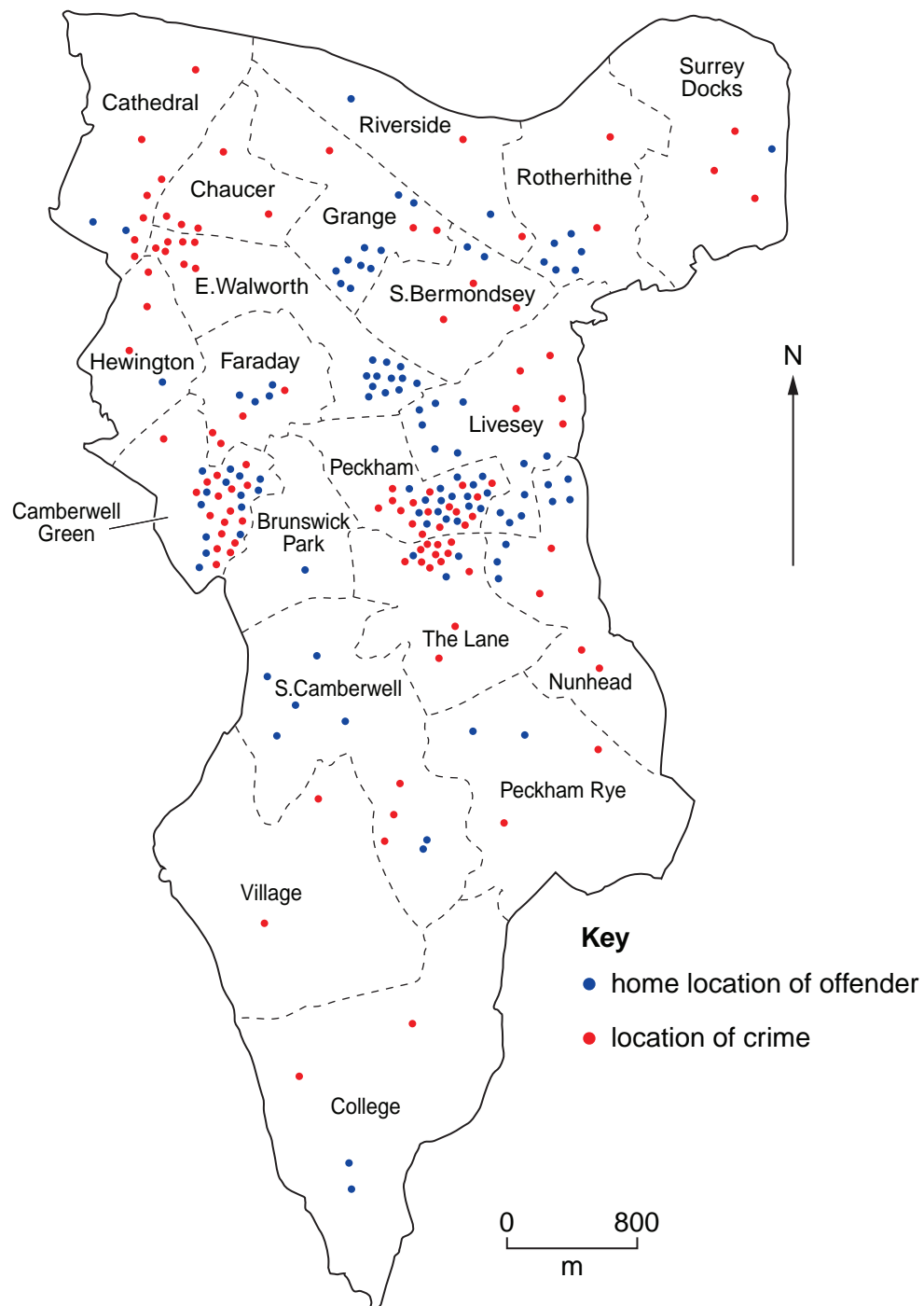




Fig. 6 for Question 4

## The main land use features of the London borough of Southwark

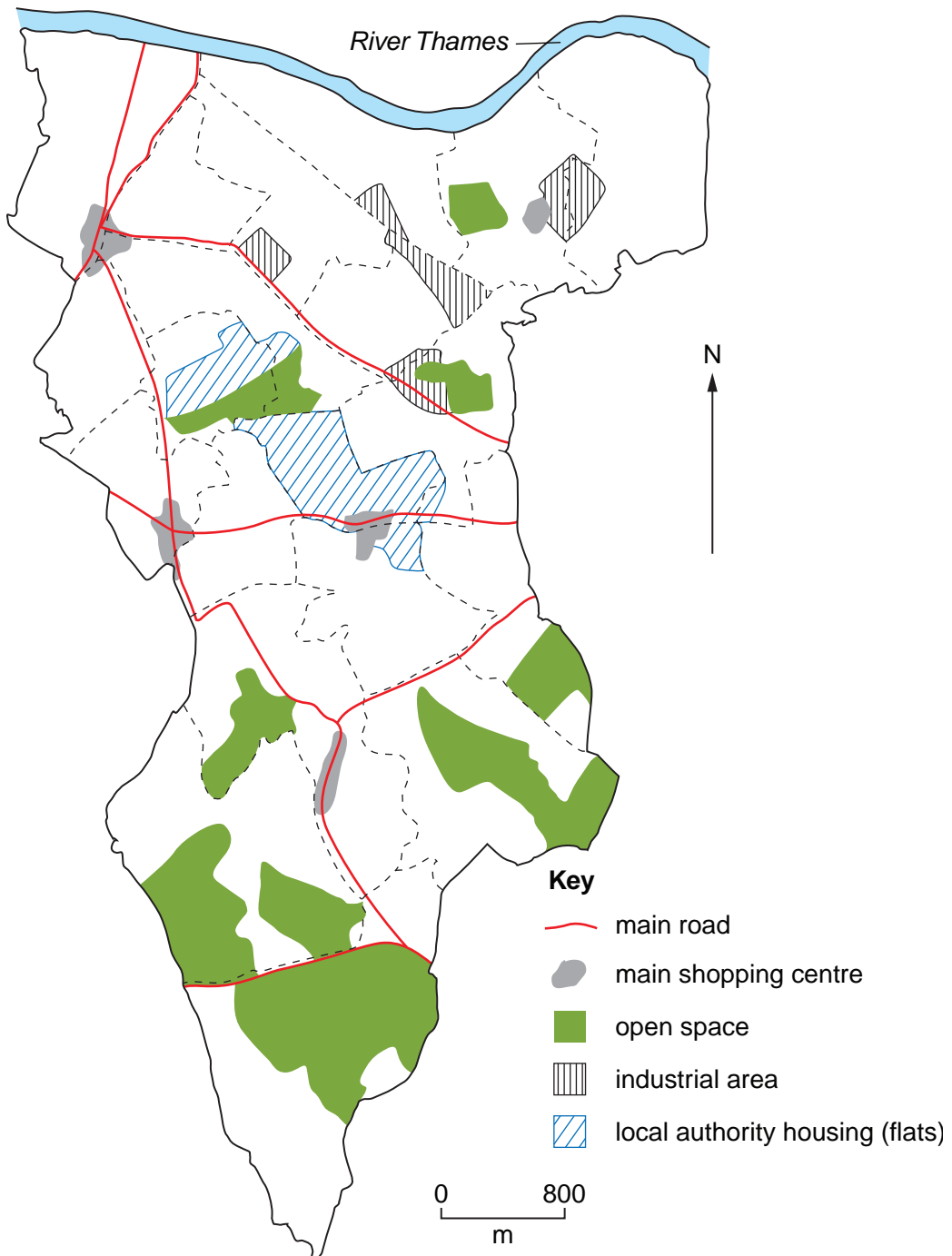
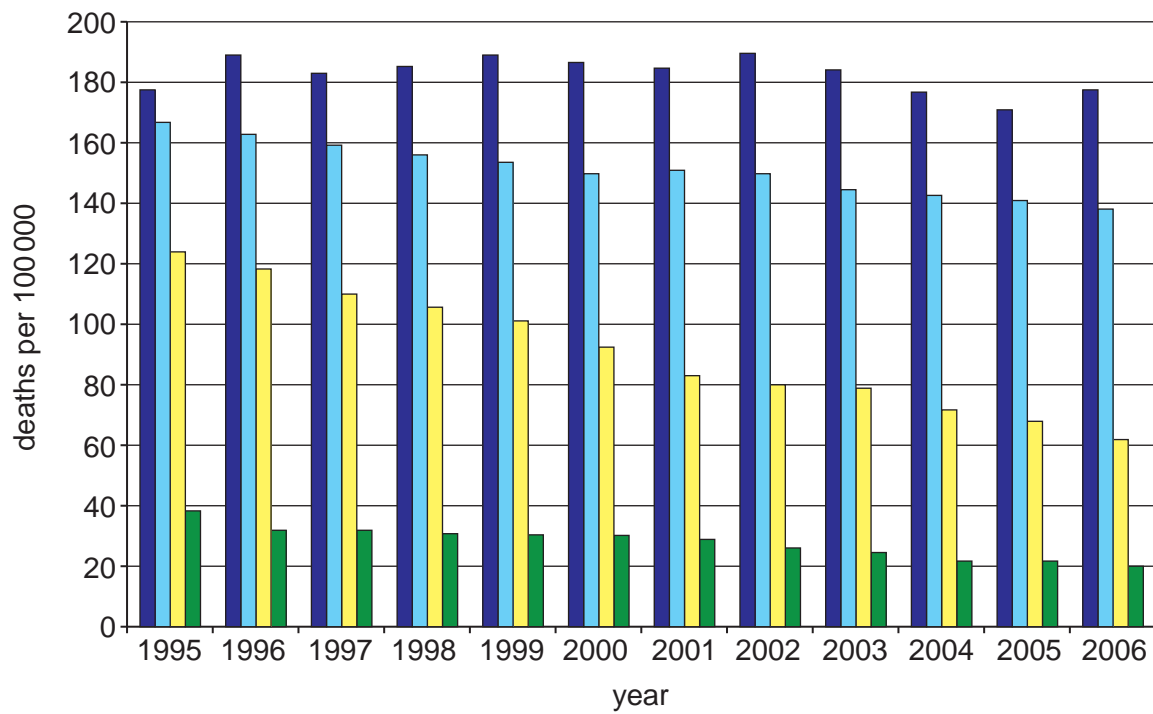


Fig. 7 for Question 5

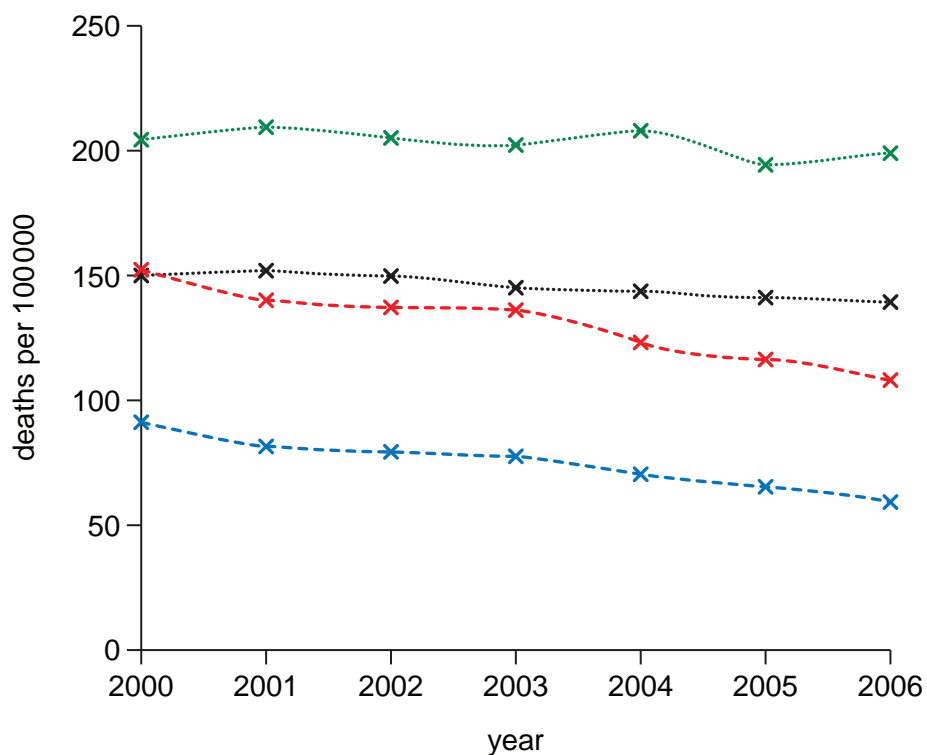
Mortality rates for the population aged under 75 from the main degenerative diseases in Scotland, 1995–2006

**Key**

- other
- cancers
- coronary heart disease
- stroke

Fig. 8 for Question 5

Mortality rates in Scotland as a whole and the most deprived areas of Scotland, from coronary heart disease and cancers, 2000–2006



### Key

#### cancers

..... Scotland

..... 15% most deprived areas

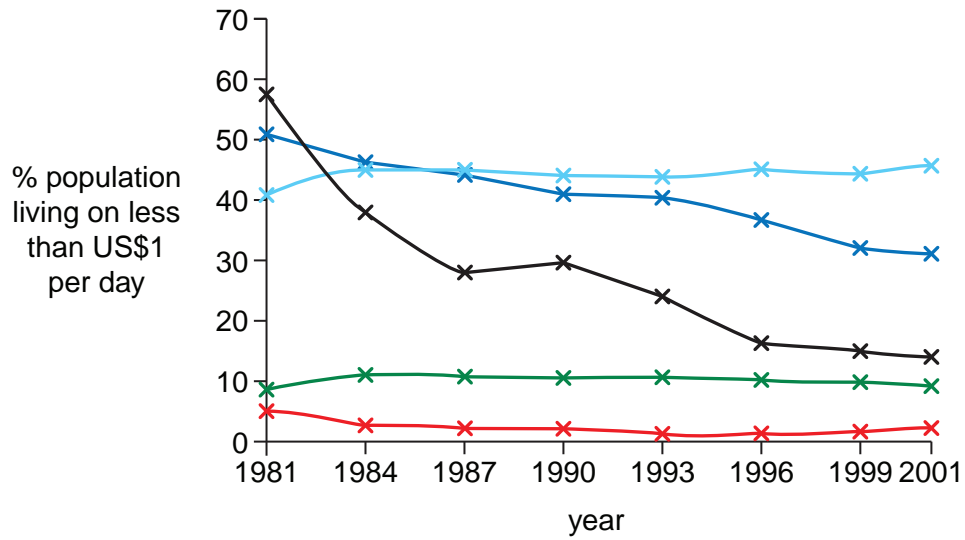
#### coronary heart disease

----- Scotland

----- 15% most deprived areas

Fig. 9 for Question 6

## Levels of poverty in selected world regions, 1981–2001

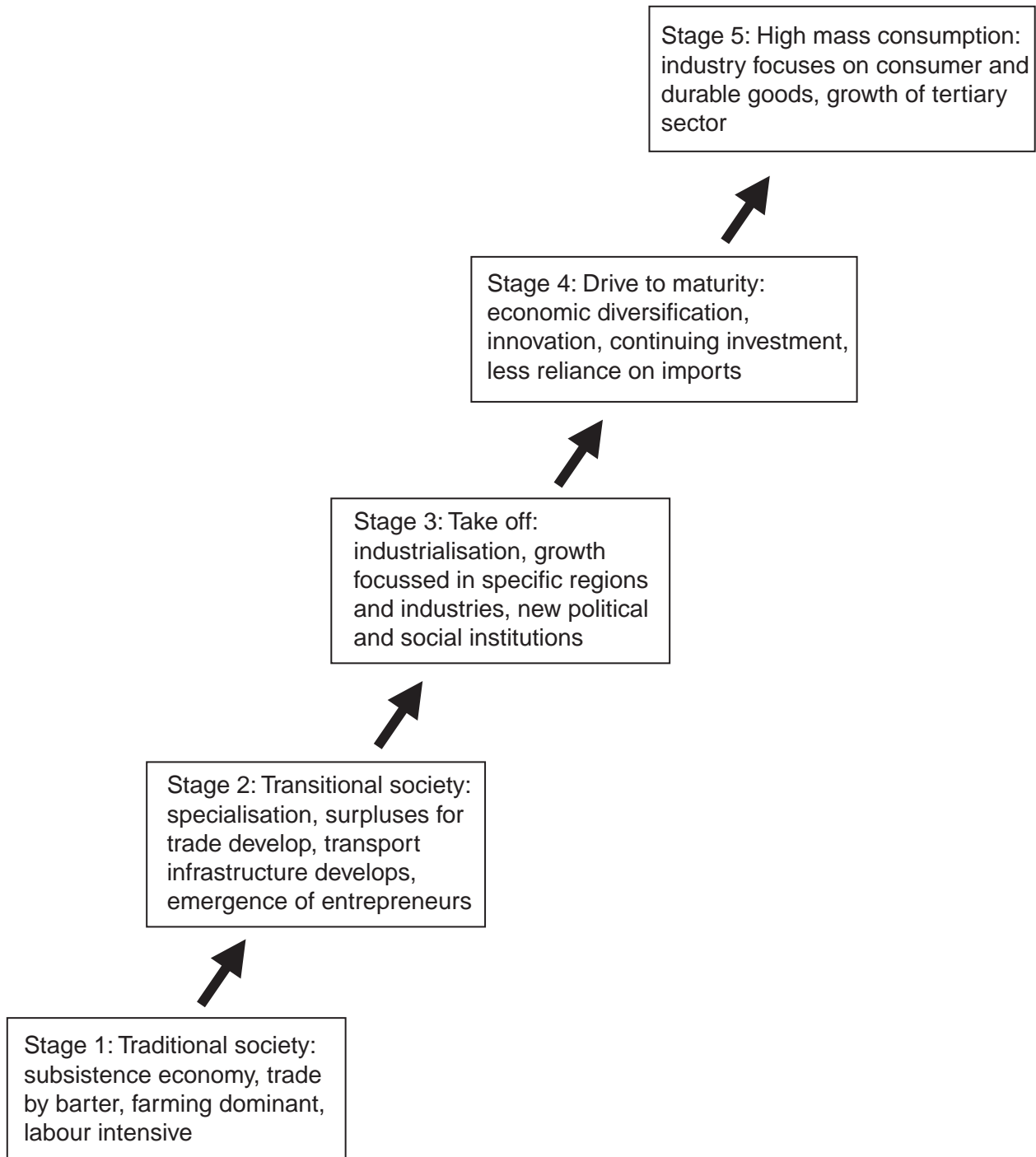


## Key

- Sub-Saharan Africa
- South Asia
- East Asia and Pacific
- Latin America
- Middle East and North Africa

Fig. 10 for Question 6

## Rostow's model of economic development







---

Permission to reproduce items where third-party owned material protected by copyright is included has been sought and cleared where possible. Every reasonable effort has been made by the publisher (UCLES) to trace copyright holders, but if any items requiring clearance have unwittingly been included, the publisher will be pleased to make amends at the earliest possible opportunity.

University of Cambridge International Examinations is part of the Cambridge Assessment Group. Cambridge Assessment is the brand name of University of Cambridge Local Examinations Syndicate (UCLES), which is itself a department of the University of Cambridge.