



UNIVERSITY OF CAMBRIDGE INTERNATIONAL EXAMINATIONS
General Certificate of Education Ordinary Level

METALWORK

6040/01, 6040/02

October/November 2007

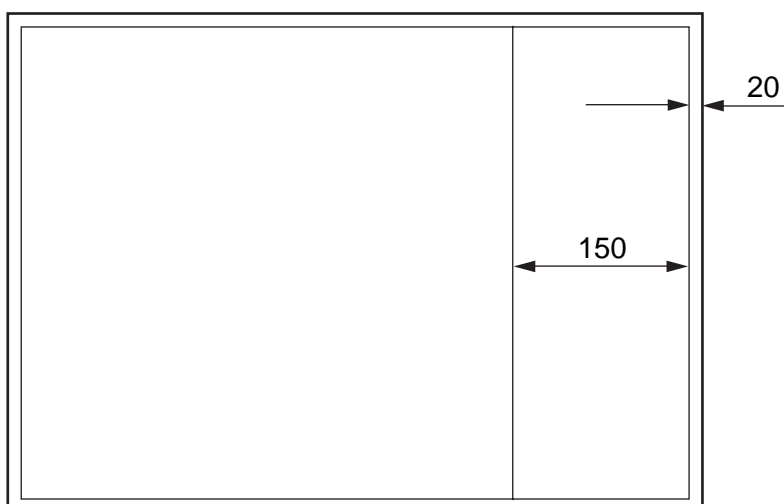
CONFIDENTIAL INSTRUCTIONS

Great care should be taken to ensure that any confidential information given does not reach the candidates either directly or indirectly.

READ THESE INSTRUCTIONS FIRST

Paper 6040/1 Drawing and Design

Each candidate will require drawing instruments and one piece of good quality A2 drawing paper. This should be ruled out as shown below before the examination.



Paper 6040/2 Practical

Please note that all materials required for this test are to be provided locally. They will not be provided by the Syndicate.

Candidates must **not** be allowed a second supply of material.

No assistance or information, other than that printed in the examination paper, is to be given to any candidate.

No machine other than the drilling machine and a centre-lathe may be used.

All materials cut to length are to be left from the saw, except as otherwise mentioned.

N.B. The reducing of materials to examination requirements and the preparation of special tools or parts is to be undertaken by the candidates before the examination. Failure to prepare materials as specified will seriously handicap candidates.

This document consists of 3 printed pages and 1 blank page.



Each candidate is to be supplied with the following materials.

All dimensions are in millimetres.

One piece BDMS $40 \times 5 \times 110$ long. Both ends square.
 One piece BDMS $16 \times 16 \times 50$ long. Both ends square.
 One piece BDMS $12 \times 12 \times 50$ long. Both ends square.
 One piece BDMS $12 \times 3 \times 30$ long. Both ends square.
 One piece BDMS $\text{Ø}10 \times 140$ long. Both ends square.
 One piece BDMS $\text{Ø}6 \times 40$ long. Prepared as in Fig. 1 prior to the examination.
 One piece BDMS $12 \times 3 \times 12$ long. Both ends square.
 Two $\text{Ø}4 \times 25$ long round head steel rivets.
 One M6 $\times 15$ long countersunk head screw.
 One M5 $\times 20$ long cheese head or round head screw and nut.

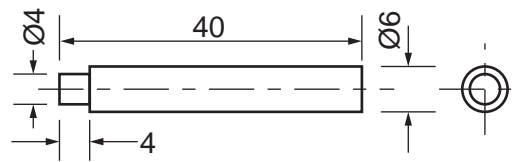


Fig. 1

One bag in which to enclose work.
 Two tie-on labels.

Every **two** candidates will require:

200 or 250 second cut hand file or near;
 200 or 250 smooth cut hand file or near (to clean up a 6 wide slot);
 150 or 200 square or three square smooth file (needs to fit in a 6 wide slot).

Every **five** candidates will require:

M6 taper (or second) and bottoming taps and wrench;
 Cutting compound;
 Rivet snap for $\text{Ø}4$ round head rivet.

Every candidate will require silver solder and appropriate flux to make one joint.

Each drilling machine to be equipped with:

Machine vice;
 Drills 4.0
 5.0
 6.0
 Countersink bit

At the end of the examination the Supervisor is requested to carry out the following.

1. To see that the name and examination number of each candidate are clearly and correctly marked on the tie-on labels and that the labels are securely fastened, one to the candidate's work and any unfinished material and the other to the bag containing the candidate's work.
2. To enter the required details on one of the envelopes intended for scripts (reading 'pieces of work' for 'scripts') and to enclose a completed attendance sheet(s).
3. To pack the work securely and send it with the envelope containing the attendance sheet(s) to University of Cambridge International Examinations.

Permission to reproduce items where third-party owned material protected by copyright is included has been sought and cleared where possible. Every reasonable effort has been made by the publisher (UCLES) to trace copyright holders, but if any items requiring clearance have unwittingly been included, the publisher will be pleased to make amends at the earliest possible opportunity.

University of Cambridge International Examinations is part of the Cambridge Assessment Group. Cambridge Assessment is the brand name of University of Cambridge Local Examinations Syndicate (UCLES), which is itself a department of the University of Cambridge.