

UNIVERSITY OF CAMBRIDGE INTERNATIONAL EXAMINATIONS
General Certificate of Education Ordinary Level

METALWORK

6040/01, 6040/02

CONFIDENTIAL INSTRUCTIONS

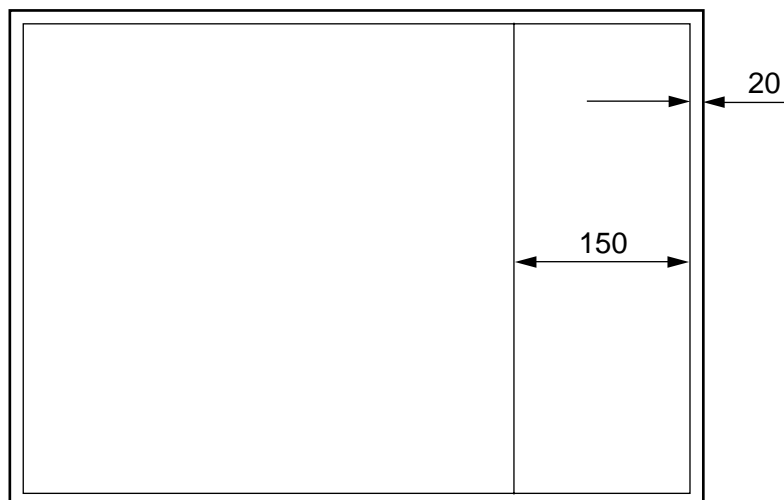
October/November 2006

Great care should be taken to ensure that any confidential information given does not reach the candidates either directly or indirectly.

READ THESE INSTRUCTIONS FIRST

Paper 6040/1 Drawing and Design

Each candidate will require drawing instruments and one piece of good quality A2 drawing paper. This should be ruled out as shown below before the examination.



Paper 6040/2 Practical

Please note that all materials required for this test are to be provided locally. They will not be provided by the Syndicate.

Candidates must **not** be allowed a second supply of material.

No assistance or information, other than that printed in the examination paper, is to be given to any candidate.

No machine other than the drilling machine and a centre-lathe may be used.

All materials cut to length are to be left from the saw, except as otherwise mentioned.

N.B. The reducing of materials to examination requirements and the preparation of special tools or parts is to be undertaken by the candidates before the examination. Failure to prepare materials as specified will seriously handicap candidates.

This document consists of **3** printed pages and **1** blank page.



Each candidate is to be supplied with the following materials.

All dimensions are in millimetres.

One piece BDMS $12 \times 12 \times 100$ long. Both ends squared.

One piece BDMS $12 \times 12 \times 40$ long. Both ends squared.

One piece BDMS $\text{Ø}12 \times 50$ long prepared as in Fig. 1 prior to the examination.

One piece BDMS $\text{Ø}6 \times 50$ long prepared as in Fig. 2 prior to the examination.

One piece BDMS $10 \times 2 \times 23$ long.

One piece BDMS $25 \times 3 \times 88$ long. One end square.

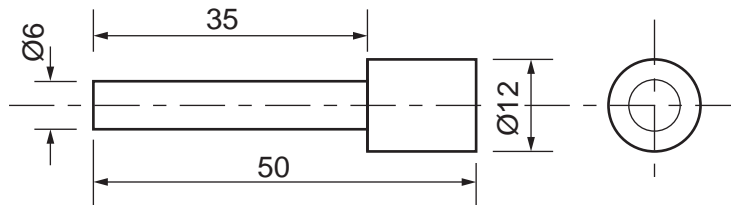


Fig. 1

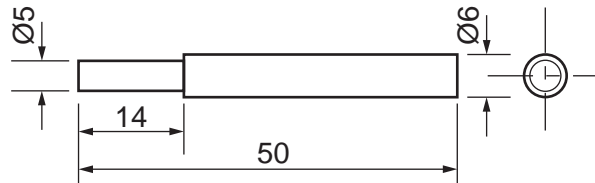


Fig. 2

One bag in which to enclose work.

Two tie-on labels.

Every **two** candidates will require:

200 or 250 second cut hand file or near;

200 or 250 smooth cut hand file or near;

150 warding file (or other suitable smooth cut to form 2 mm slot);

150 or 200 square or three square smooth file.

Abrasive saw or similar to remove waste from 3mm material.

Every **five** candidates will require:

A metal former over which the piece of $25 \times 3 \times 88$ BDMS can be held in a vice and bent to 90° . It is suggested that one corner of the former has a 3 radius.

M6 tap and wrench;

M6 die and holder;

Cutting compound.

Every candidate will require silver solder and appropriate flux to make one joint.

Each drilling machine to be equipped with:

Machine vice;

Drills 4.0 (or suitable for starting abrasive cut)

5.0

6.0

At the end of the examination the Supervisor is requested to carry out the following.

1. To see that the name and examination number of each candidate are clearly and correctly marked on the tie-on labels and that the labels are securely fastened, one to the candidate's work and any unfinished material and the other to the bag containing the candidate's work.
2. To enter the required details on one of the envelopes intended for scripts (reading 'pieces of work' for 'scripts') and to enclose a completed attendance sheet(s).
3. To pack the work securely and send it with the envelope containing the attendance sheet(s) to University of Cambridge International Examinations.

Permission to reproduce items where third-party owned material protected by copyright is included has been sought and cleared where possible. Every reasonable effort has been made by the publisher (UCLES) to trace copyright holders, but if any items requiring clearance have unwittingly been included, the publisher will be pleased to make amends at the earliest possible opportunity.

University of Cambridge International Examinations is part of the University of Cambridge Local Examinations Syndicate (UCLES), which is itself a department of the University of Cambridge.