



UNIVERSITY OF CAMBRIDGE INTERNATIONAL EXAMINATIONS
General Certificate of Education Ordinary Level

CANDIDATE
NAME

CENTRE
NUMBER

| | | | | |
|--|--|--|--|--|
| | | | | |
|--|--|--|--|--|

CANDIDATE
NUMBER

| | | | |
|--|--|--|--|
| | | | |
|--|--|--|--|

* 1 9 0 8 9 1 5 8 5 1 *

COMPUTER STUDIES

7010/13

Paper 1

October/November 2012

2 hours 30 minutes

Candidates answer on the Question Paper.

No Additional Materials are required.

READ THESE INSTRUCTIONS FIRST

Write your Centre number, candidate number and name on all the work you hand in.

Write in dark blue or black pen.

You may use a soft pencil for any diagrams, graphs or rough working.

Do not use staples, paper clips, highlighters, glue or correction fluid.

DO NOT WRITE IN ANY BARCODES.

Answer **all** questions.

No marks will be awarded for using brand names of software packages or hardware.

At the end of the examination, fasten all your work securely together.

The number of marks is given in brackets [] at the end of each question or part question.

For Examiner's Use

| |
|--|
| |
|--|

This document consists of **20** printed pages.



- 1 For advertising at a trade fair, a company has a choice of computer facilities. One option is a stand-alone computer with multimedia facilities. The other option is a computer with Internet access to the company's website.

Discuss the benefits and drawbacks of each method.

Stand-alone computer with multimedia

Benefit

.....

Drawback

.....

Internet website

Benefit

.....

Drawback

..... [4]

- 2 New software is often developed using top-down (modular) design.

Give **three** benefits of using this method of development.

1

.....

2

.....

3

..... [3]

- 3 Five descriptions are given on the left of the diagram below. Five computer applications are shown on the right of the diagram.

For
Examiner's
Use

Using arrows, link each description to the correct application.

use of synthesisers to
combine simple
waveforms to produce
more complex sounds

animation

audio-visual
communication using
compression and echo
cancellation software

MP3

use of avatars in the
sequence of images one
after the other to produce
special effects

music generation

audio compression
technology to compress
large files into smaller files
often used in media

simulation

imitation of a real event
using a mathematical
model of a set of formulas

video-conferencing

[5]

4 (a) Describe **four** different communication methods that use the Internet.

1

.....

2

.....

3

.....

4

..... [4]

(b) Give **two** drawbacks of using the Internet for communications.

1

.....

2

..... [2]

(c) Mobile phones are a common method of communication.

Describe **four** types of application, other than the Internet, that may be available on a mobile phone.

1

.....

2

.....

3

.....

4

..... [4]

5 A program requires the user to type in a user ID which must be in the form:

XX999999

where X stands for any letter, and 9 stands for any digit.

(a) Name **two** possible validation checks that could be applied to this user ID.

- 1
- 2 [2]

(b) Name a validation check that could **not** be used on this occasion.
Give a reason for your choice.

Name

Reason

.....

..... [2]

6 The following is a list of stages when an email is sent and received.

Write the numbers from 1 to 8 in the right-hand column to put each stage of the process in the correct order. The first one has been done for you.

| Description of stage | Order of stage |
|--|----------------|
| The message travels over the Internet and arrives at recipient's ISP mail server | |
| Message sent to sender's ISP mail server | |
| Recipient logs on to read his messages | |
| The sender composes his message and activates the send command | 1 |
| Message held in recipient's electronic mail box | |
| ISP mail server examines address associated with message | |
| Message retrieved and sent to recipient's computer to be opened and read | |
| Sender's ISP mail server decides how to route the message | |

[7]

7 Credit card fraud in many countries is now reducing.

(a) What changes to credit card technology have helped this reduction?

.....

.....

..... [1]

However, there has been a large increase in online fraud. This has resulted in fraudulent use of bank accounts.

(b) Name and describe **three** ways bank account information (such as passwords) can be accessed illegally.

1

.....

Description

.....

.....

2

.....

Description

.....

.....

3

.....

Description

.....

.....

..... [6]

8 Word processors often use language translators and spell checkers to help users when composing documents.

(a) A user selects the spell checker to check a document, but two errors in the document are not identified.

Give **two** possible reasons for this.

1

.....

2

..... [2]

(b) The user also types in the following statement:

This is an example of a translation using a word processor

and selects the language translator English-Russian and the following text is produced:

Это пример перевода на текстовом редакторе

Such translations are often not very good. Give **one** reason for this.

.....

..... [1]

(c) Describe **two** other features you might expect to find in a typical word processor.

1

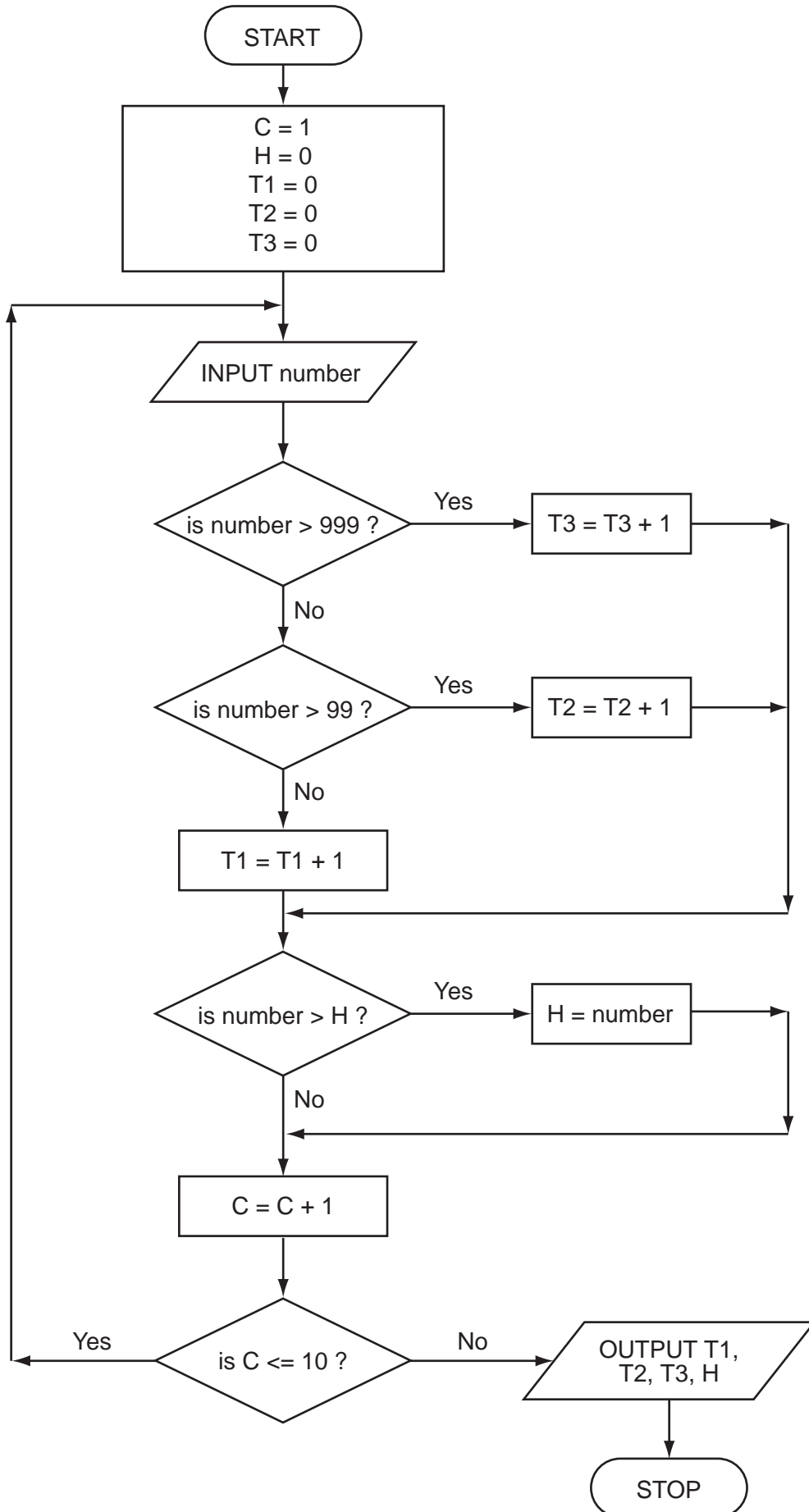
.....

2

..... [2]

9 Study this flowchart very carefully.

For
Examiner's
Use



10 You have just been appointed as the IT representative of a small engineering company. The company need to buy:

- external backing storage
- printers
- input devices

Choose a suitable example for each and give a reason for your choice.

External storage device

Reason for choice

.....

.....

Printer type

Reason for choice

.....

.....

Input device

Reason for choice

.....

..... [6]

11 A database was set up showing the largest ocean-going liners. Part of the database is shown below.

For
Examiner's
Use

| Liner ID | Year built | Gross Tonnage | Country of Registration | Country of Construction |
|----------|------------|---------------|-------------------------|-------------------------|
| OA | 2009 | 225 282 | Norway | Finland |
| IN | 2008 | 154 407 | Norway | Finland |
| QM | 2004 | 148 528 | UK | France |
| EX | 2000 | 137 308 | Norway | Finland |
| VO | 1999 | 137 276 | Norway | Finland |
| GP | 1997 | 108 865 | UK | Italy |
| DE | 1996 | 101 509 | USA | Italy |
| SP | 1995 | 77 499 | UK | Italy |
| SO | 1988 | 73 192 | Norway | France |
| FR | 1972 | 66 343 | France | France |
| QE | 1940 | 86 673 | UK | UK |
| NO | 1935 | 79 280 | France | France |
| MJ | 1922 | 56 561 | UK | Germany |
| TI | 1912 | 46 329 | UK | UK |
| MA | 1907 | 31 938 | UK | UK |

(a) How many records are shown in the above part?

..... [1]

(b) Using **Liner ID** only, what would be output if the following search condition was typed in:

(Year built < 2000) AND (Country of Registration = Country of Construction)?

..... [2]

(c) Write the search condition to find out which liners have a gross tonnage larger than 80 000 or are registered in the UK.

..... [2]

12 (a) A spreadsheet was set up to determine if a triangle is right-angled. Part of the spreadsheet is shown below.

For
Examiner's
Use

| | A | B | C | D | E |
|---|---|----|----|-------------------|---------------------------|
| 1 | a | b | c | $a^2 + b^2 - c^2$ | is triangle right-angled? |
| 2 | 2 | 5 | 6 | -7 | No |
| 3 | 3 | 4 | 5 | 0 | Yes |
| 4 | 3 | 6 | 8 | -19 | No |
| 5 | 5 | 12 | 13 | 0 | Yes |
| 6 | 7 | 24 | 25 | 0 | Yes |
| 7 | 8 | 15 | 17 | 0 | Yes |

(i) What formula must be in D3?

.....
 [1]

(ii) Complete the formula that must be in column E to generate the output Yes or No. Use cell E3 as your example.

= IF (D3 = 0,,) [1]

(iii) How could the spreadsheet be used if **a** and **b** values were known and it was required to predict the value of **c** to get a right-angled triangle?

.....

 [2]

(b) Apart from the use of formulas and functions, give **three** features of spreadsheet software.

*For
Examiner's
Use*

1

.....

2

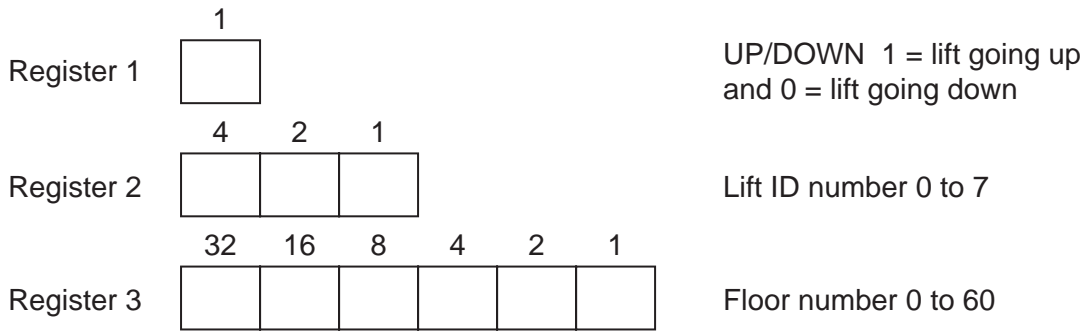
.....

3

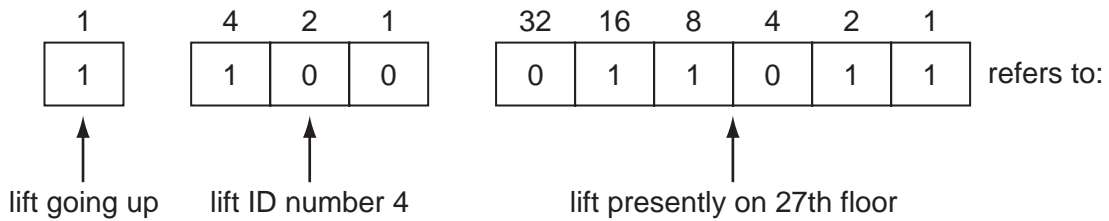
..... [3]

13 A large hotel uses eight lifts (elevators) to carry passengers between its sixty floors.

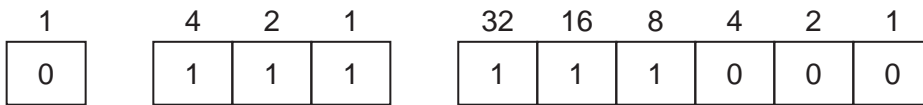
A computer is used to control and monitor the lifts. Each lift has three registers to represent its state.



Thus



(a) If the three registers contain the following data:



what information about the lift is shown?

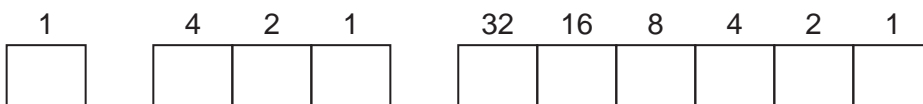
.....

.....

..... [2]

(b) How would the following information be shown in the three registers:

lift 6 presently on the 45th floor and going down



[2]

(c) (i) A customer is on the 14th floor and wants to go to the 50th floor. She presses the button to call the lift.

What **two** pieces of information would the computer check to identify which of the eight lifts should be made available?

1

.....

2

..... [2]

(ii) Using your answers to part (i), which of the following lifts would be made available to the customer?

| | | | | | | | | | | |
|---|---|---|---|---|---|---|---|---|---|----------|
| 1 | 0 | 0 | 0 | 1 | 0 | 0 | 1 | 0 | 0 | A |
| 0 | 0 | 0 | 1 | 0 | 0 | 1 | 1 | 1 | 1 | B |
| 1 | 0 | 1 | 0 | 1 | 1 | 0 | 0 | 1 | 0 | C |
| 1 | 0 | 1 | 1 | 0 | 0 | 1 | 0 | 1 | 0 | D |

..... [1]

(d) An engineer wishes to test that this computer system detects incorrect data.

Describe what input the engineer might use to check that the computer can correctly identify a fault condition.

.....

.....

.....

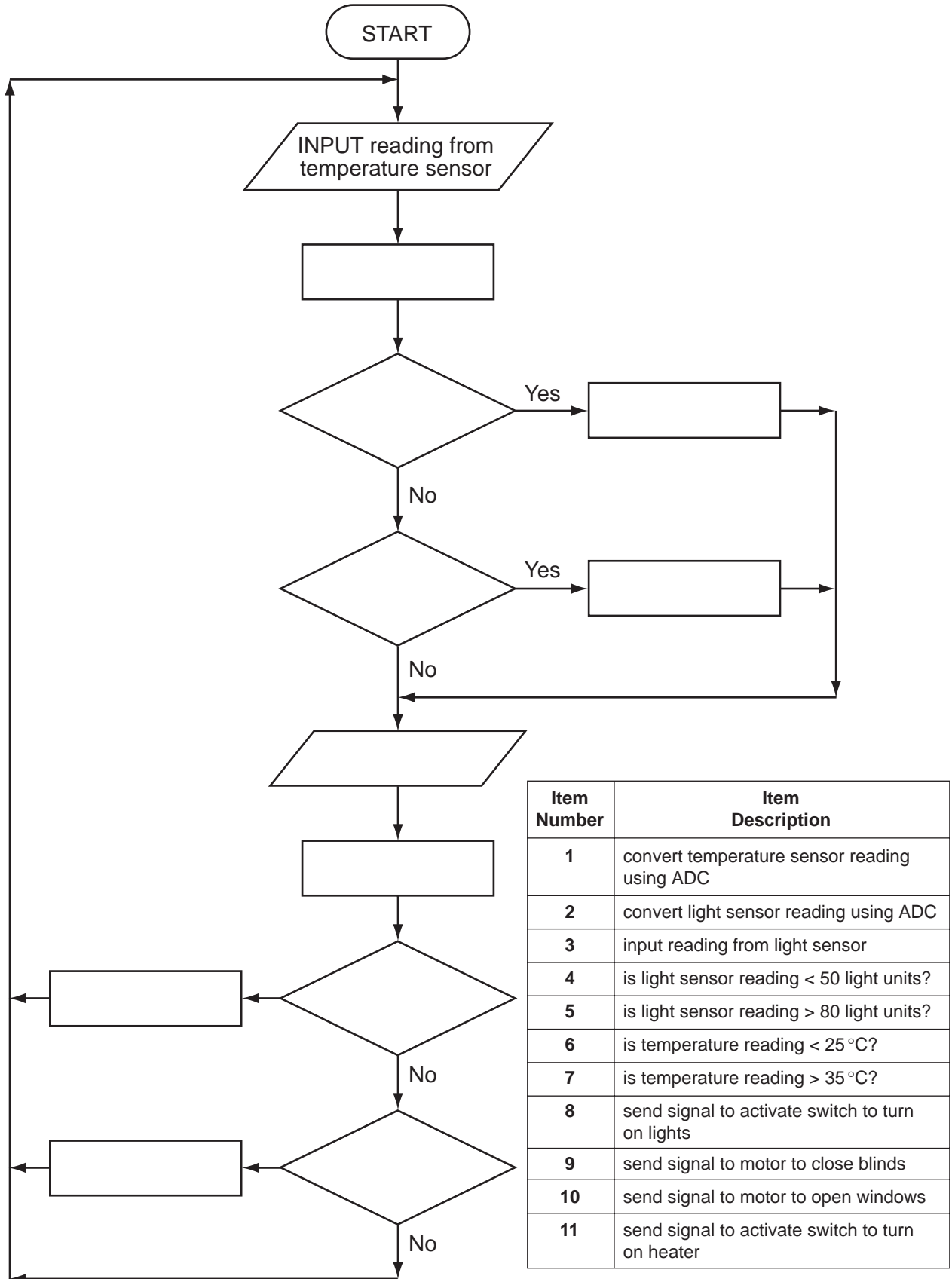
.....

..... [2]

14 The following flowchart shows how a computer and sensors are used to control the environment in a greenhouse. Temperatures must be between 25°C and 35°C. Light must be between 50 and 80 light units.

For
Examiner's
Use

(a) Complete the flowchart, using item number only, from the list of items given below.



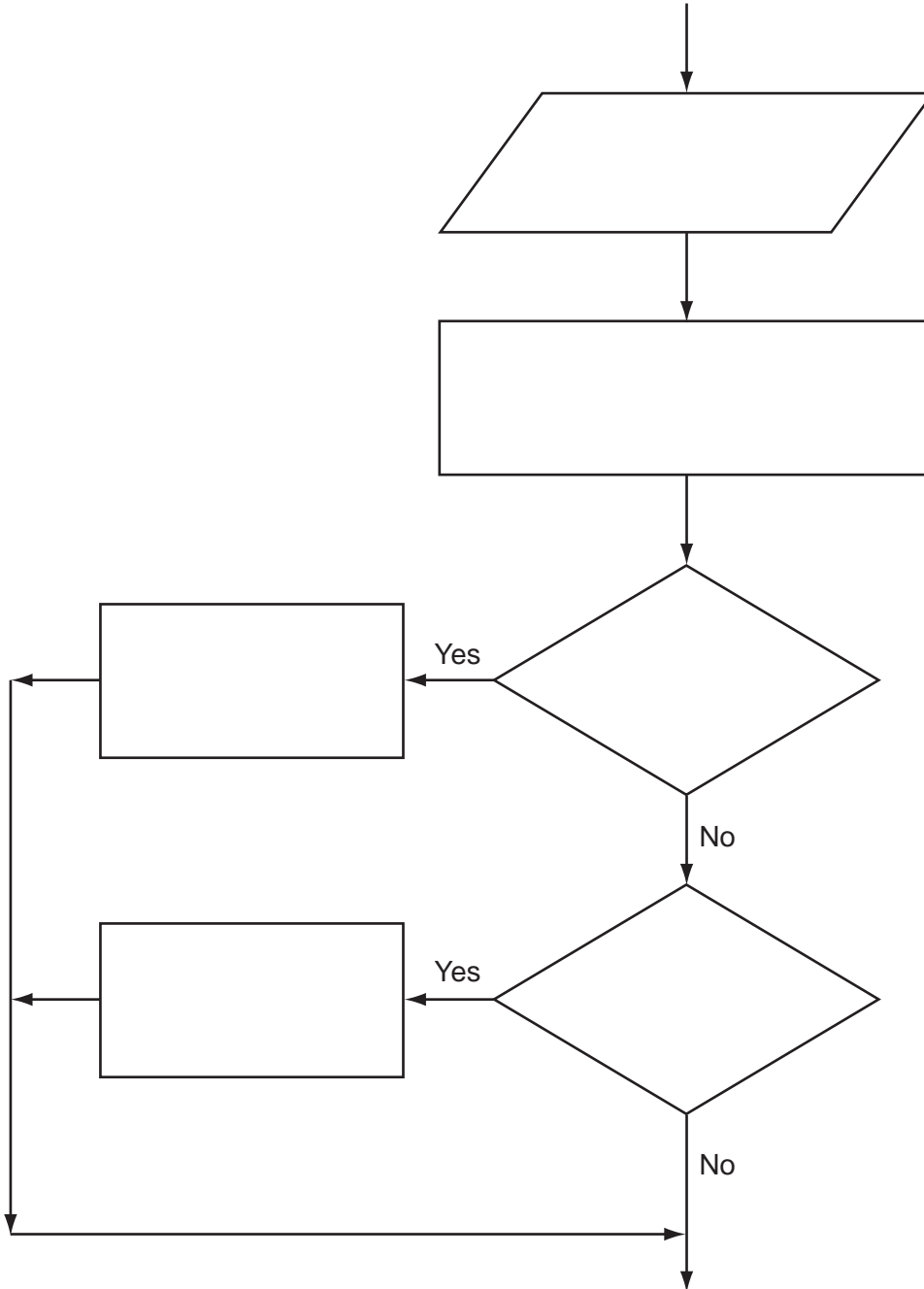
[5]

(b) The computer also checks on humidity levels (using humidity sensors) which must be between the values of 40 and 90.

For
Examiner's
Use

If humidity is too low, water is sprayed into the air.
If humidity is too high, fresh air is allowed to enter.

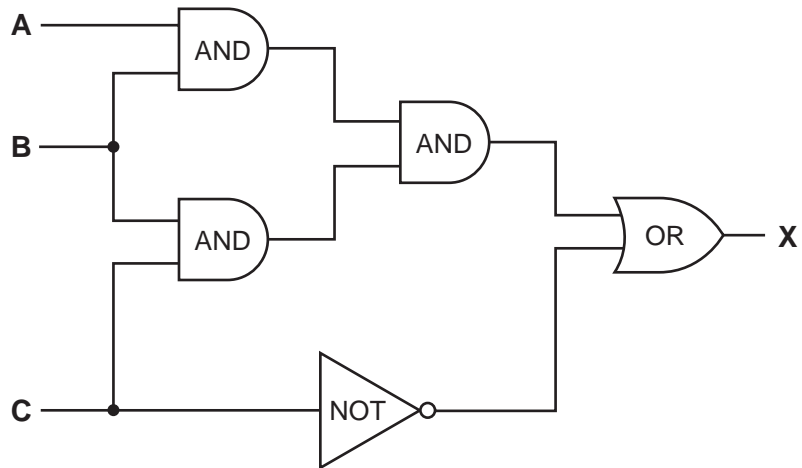
Write the necessary commands in the following flowchart section to show how the humidity levels are controlled:



[4]

15 (a) Complete the truth table for the following logic circuit:

For
Examiner's
Use



| A | B | C | X |
|---|---|---|---|
| 0 | 0 | 0 | |
| 0 | 0 | 1 | |
| 0 | 1 | 0 | |
| 0 | 1 | 1 | |
| 1 | 0 | 0 | |
| 1 | 0 | 1 | |
| 1 | 1 | 0 | |
| 1 | 1 | 1 | |

[4]

- (b) The above logic circuit uses AND, OR and NOT gates.
Name another logic gate and complete its truth table.

*For
Examiner's
Use*

Name of gate

| A | B | X |
|---|---|---|
| 0 | 0 | |
| 0 | 1 | |
| 1 | 0 | |
| 1 | 1 | |

[3]

