



UNIVERSITY OF CAMBRIDGE INTERNATIONAL EXAMINATIONS  
International General Certificate of Secondary Education

CANDIDATE  
NAME

CENTRE  
NUMBER

--	--	--	--	--

CANDIDATE  
NUMBER

--	--	--	--

**CAMBRIDGE INTERNATIONAL MATHEMATICS**

**0607/13**

Paper 1 (Core)

**May/June 2012**

**45 minutes**

Candidates answer on the Question Paper

Additional Materials: Geometrical Instruments

**READ THESE INSTRUCTIONS FIRST**

Write your Centre number, candidate number and name on all the work you hand in.

Write in dark blue or black pen.

Do not use staples, paper clips, highlighters, glue or correction fluid.

You may use a pencil for any diagrams or graphs.

**DO NOT WRITE IN ANY BARCODES.**

Answer **all** the questions.

**CALCULATORS MUST NOT BE USED IN THIS PAPER.**

All answers should be given in their simplest form.

You must show all the relevant working to gain full marks and you will be given marks for correct methods even if your answer is incorrect.

The number of marks is given in brackets [ ] at the end of each question or part question.

The total number of marks for this paper is 40.

**For Examiner's Use**

--

This document consists of **9** printed pages and **3** blank pages.



\* 8 1 5 1 4 5 1 6 5 0 \*

**Formula List**

Area,  $A$ , of triangle, base  $b$ , height  $h$ .

$$A = \frac{1}{2}bh$$

Area,  $A$ , of circle, radius  $r$ .

$$A = \pi r^2$$

Circumference,  $C$ , of circle, radius  $r$ .

$$C = 2\pi r$$

Curved surface area,  $A$ , of cylinder of radius  $r$ , height  $h$ .

$$A = 2\pi rh$$

Curved surface area,  $A$ , of cone of radius  $r$ , sloping edge  $l$ .

$$A = \pi rl$$

Curved surface area,  $A$ , of sphere of radius  $r$ .

$$A = 4\pi r^2$$

Volume,  $V$ , of prism, cross-sectional area  $A$ , length  $l$ .

$$V = Al$$

Volume,  $V$ , of pyramid, base area  $A$ , height  $h$ .

$$V = \frac{1}{3}Ah$$

Volume,  $V$ , of cylinder of radius  $r$ , height  $h$ .

$$V = \pi r^2 h$$

Volume,  $V$ , of cone of radius  $r$ , height  $h$ .

$$V = \frac{1}{3}\pi r^2 h$$

Volume,  $V$ , of sphere of radius  $r$ .

$$V = \frac{4}{3}\pi r^3$$

Answer **all** the questionsFor  
Examiner's  
Use

- 1 (a) Work out  $0.2 \times 0.4$  .

Answer (a) ..... [1]

- (b) Write these in order, smallest first.

0.85      89%      0.9      0.745

Answer (b) ..... < ..... < ..... < ..... [1]

- 2 Work out 15% of \$160 .

Answer \$ ..... [2]

- 3 (a) Write 0.007582 correct to 3 significant figures.

Answer (a) ..... [1]

- (b) Write  $\frac{9}{20}$  as a decimal.

Answer (b) ..... [1]

4 Work out.

$$2\frac{3}{4} + 3\frac{2}{3}$$

Answer ..... [3]

---

5 (a) Find the value of  $7^0$ .

Answer (a) ..... [1]

(b) Simplify.

$$7x^2 \times 3x^5$$

Answer (b) ..... [2]

---

6 (a) Factorise.

$$3a - a^2$$

Answer (a) ..... [1]

(b) Expand and simplify.

$$(x - 5)(x + 1)$$

Answer (b) ..... [2]

7 Under each shape write the correct letter from the table.

L	Line symmetry <b>only</b>
R	Rotational symmetry <b>only</b>
B	<b>Both</b> line and rotational symmetry
N	<b>No</b> symmetry

≠

.....

P

.....

Σ

.....

§

.....

θ

.....



.....

[3]

8  $f(x) = 3x + 2$

(a) Find  $f(5)$ .

Answer (a) ..... [1]

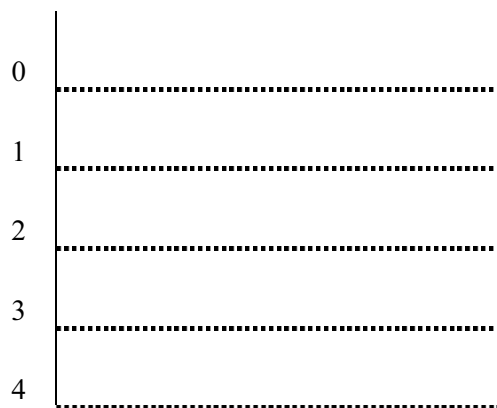
(b) Find  $x$  when  $f(x) = 14$ .

Answer (b) ..... [2]

9 A class of 21 students took a mathematics test.  
Here are their results.

29	34	18	28	43	49	8
29	45	32	28	17	46	32
26	17	42	39	21	38	47

Draw an ordered stem-and-leaf diagram to show these results.



Key: ..... | ..... means ..... [3]

10 (a) Solve.

$$5x - 2 < 3x + 5$$

Answer (a) ..... [2]

(b) Simplify.

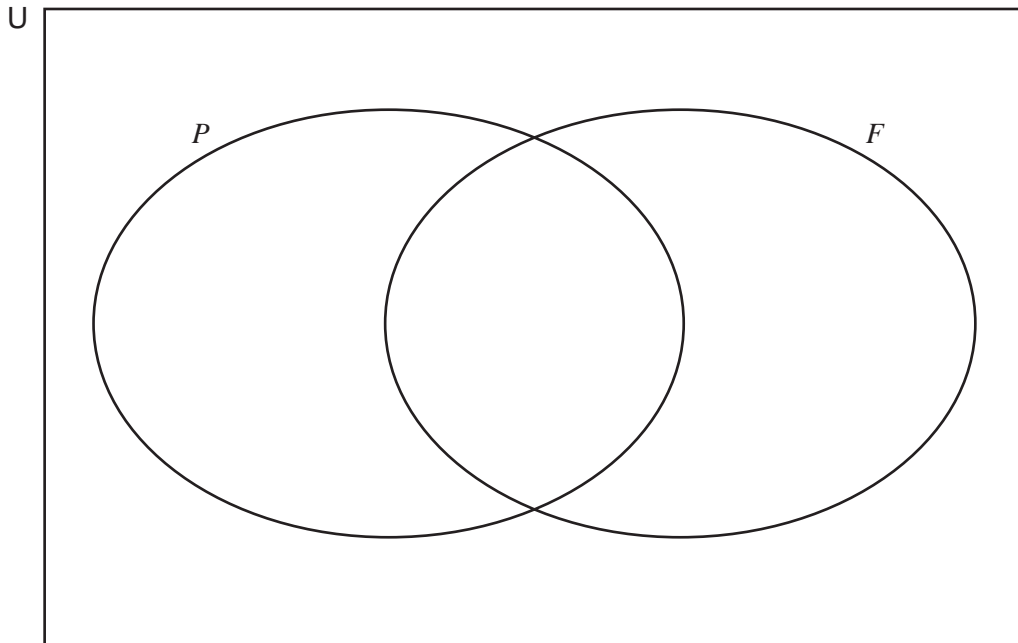
$$\frac{7}{xy} \div \frac{3x}{2y}$$

Answer (b) ..... [2]

---

- 11  $U = \{2, 3, 4, 5, 6, 7, 8, 9, 10, 11, 12, 13, 14, 15\}$   
 $P = \{\text{prime numbers}\}$   
 $F = \{\text{factors of 6}\}$

(a) Complete the Venn diagram to show this information.



[3]

(b) A number is chosen at random from the 14 elements in  $U$ .

Write down the probability that this number is an element of

(i)  $(P \cap F)$ ,

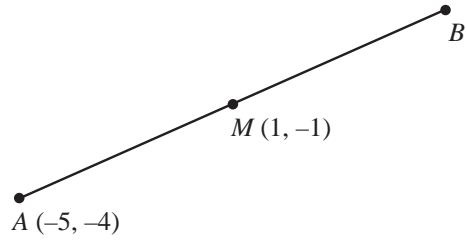
Answer (b)(i) ..... [1]

(ii)  $(P \cup F)'$ .

Answer (b)(ii) ..... [1]



12



NOT TO SCALE

For Examiner's Use

The diagram shows three points  $A(-5, -4)$ ,  $M(1, -1)$  and  $B$ .  $M$  is the midpoint of the line  $AB$ .

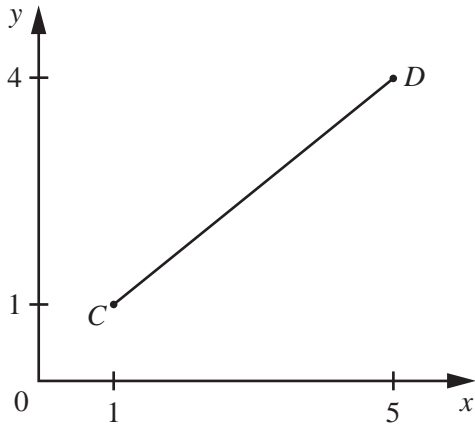
(a) Find the co-ordinates of  $B$ .

Answer (a) ( ..... , ..... ) [2]

(b) Find the gradient of the line  $AB$ .

Answer (b) ..... [2]

(c)



NOT TO SCALE

Find the length of the line  $CD$ .

Answer (c) ..... [3]

**BLANK PAGE**

**BLANK PAGE**

**BLANK PAGE**

---

Permission to reproduce items where third-party owned material protected by copyright is included has been sought and cleared where possible. Every reasonable effort has been made by the publisher (UCLES) to trace copyright holders, but if any items requiring clearance have unwittingly been included, the publisher will be pleased to make amends at the earliest possible opportunity.

University of Cambridge International Examinations is part of the Cambridge Assessment Group. Cambridge Assessment is the brand name of University of Cambridge Local Examinations Syndicate (UCLES), which is itself a department of the University of Cambridge.