

UNIVERSITY OF CAMBRIDGE INTERNATIONAL EXAMINATIONS  
General Certificate of Education  
Advanced Subsidiary Level and Advanced Level

**GEOGRAPHY**

**9696/03**

Paper 3 Advanced Human Options

May/June 2006

INSERT

**1 hour 30 minutes**

**READ THESE INSTRUCTIONS FIRST**

This insert contains all the Figures and Tables referred to in the questions.

This document consists of **6** printed pages and **2** blank pages.

IB06 06\_9696\_03/5RP  
© UCLES 2006



UNIVERSITY of CAMBRIDGE  
International Examinations

**[Turn over**

## Figs 1A and 1B and Table 1 for Question 1

## Changes in the New Zealand dairy industry, 1971-2001

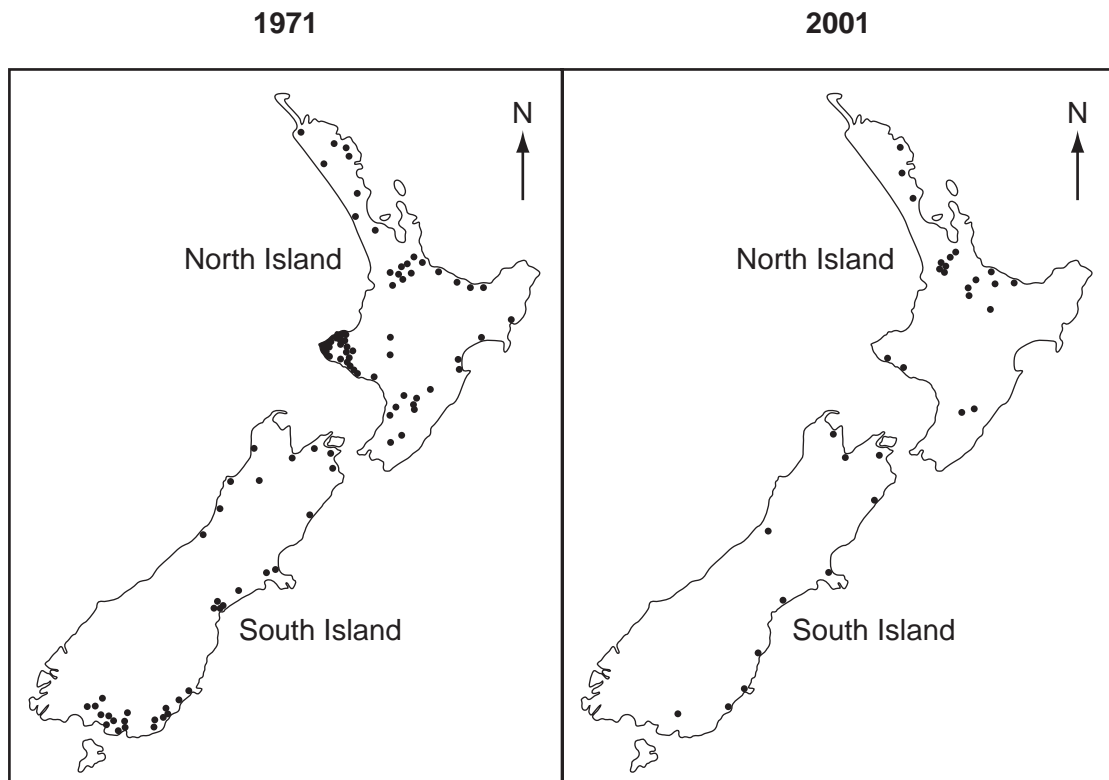
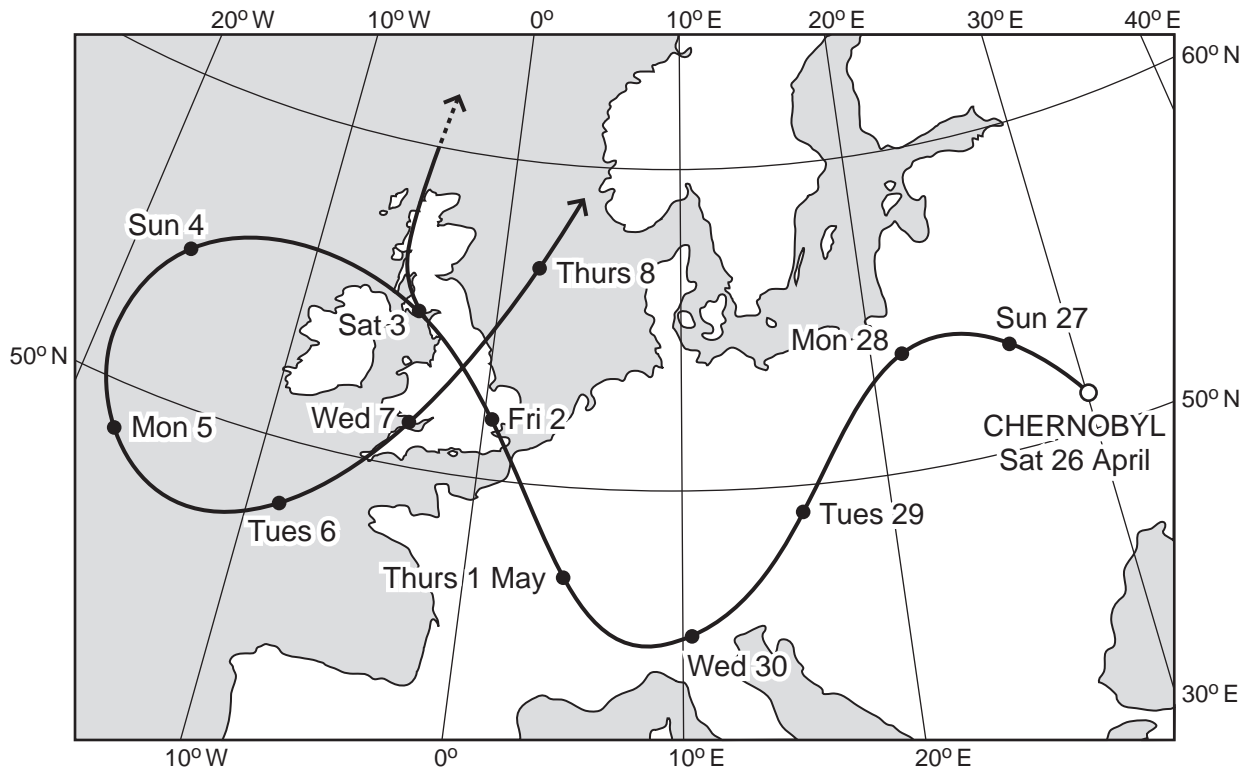


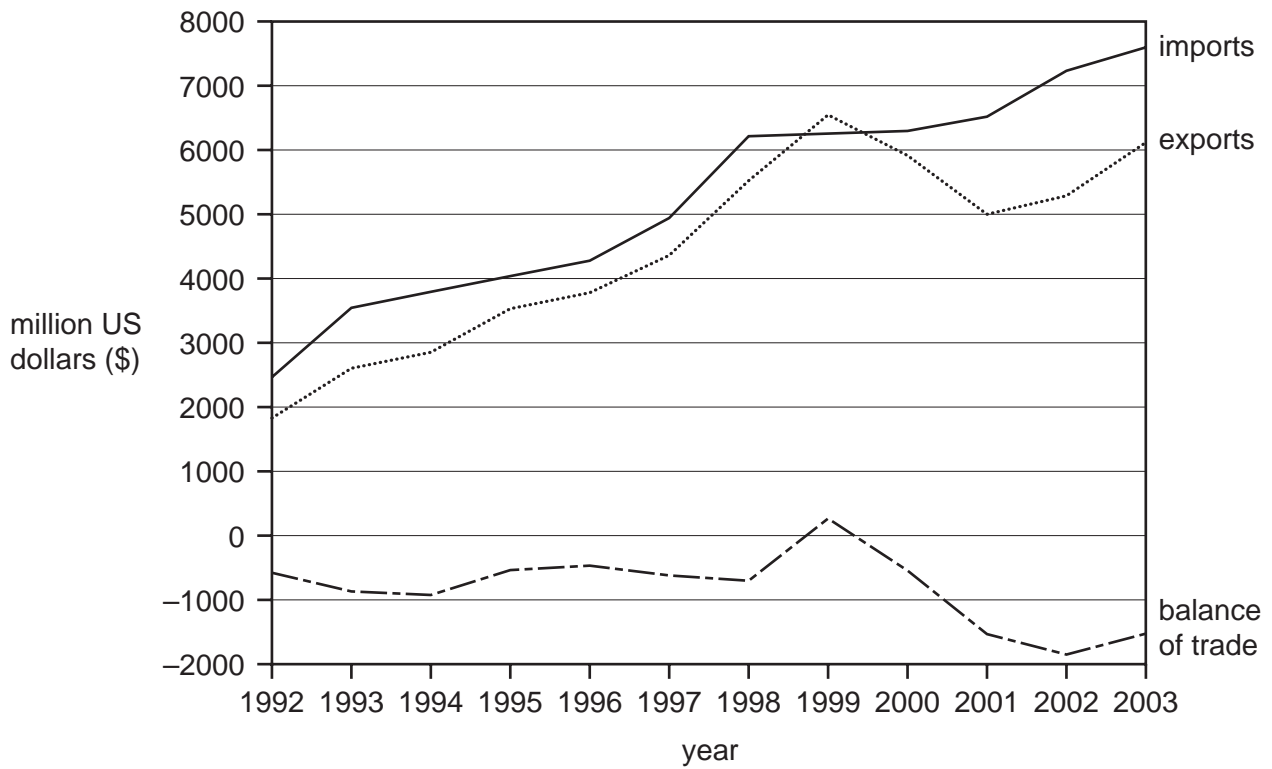
Table 1

number of dairy factories	1971	2001	change
North Island	65	16	-49
South Island	42	10	-32
total for New Zealand	107	26	-81

Fig. 2 for Question 3

## The path of the radiation cloud from Chernobyl, 1986



**Fig. 3A for Question 5****Imports, exports and the balance of trade for Costa Rica, 1992-2003****Fig. 3B for Question 5****The location of Costa Rica**

**BLANK PAGE**

## Figs 4A, 4B and 4C for Question 8

## Spatial disparities in China's industrial development, 1991-2000

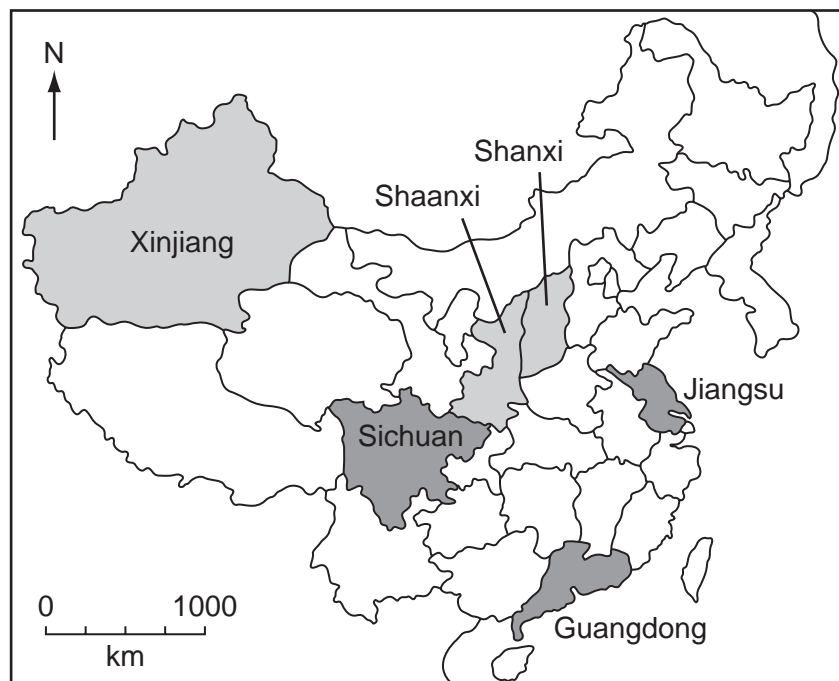


Fig. 4A

## Using a measure of industrial structure (Si)

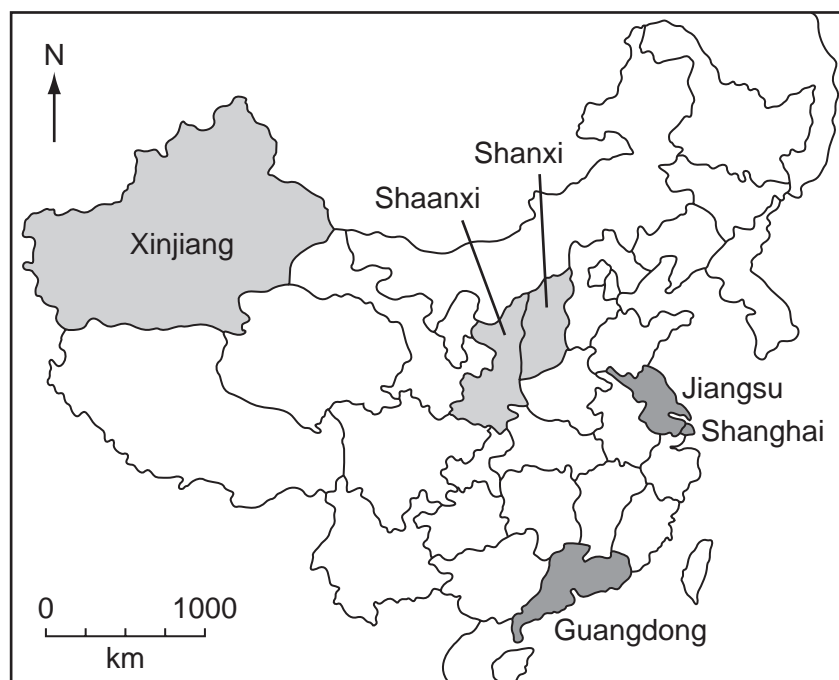
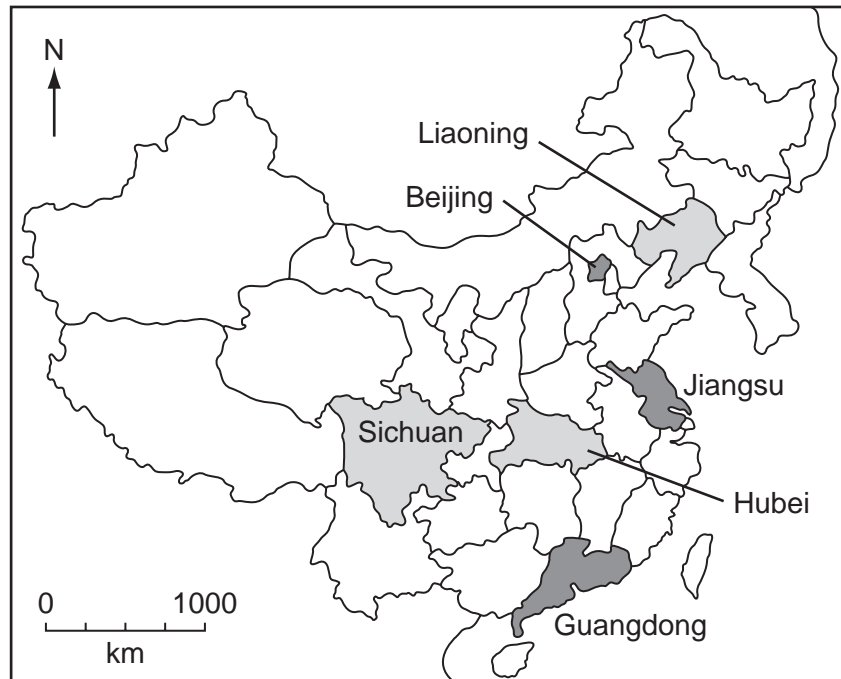


Fig. 4B

## Using a measure of industrial growth (Gi)



**KEY**

■ top 3 provinces

■ bottom 3 provinces

**Fig. 4C**

**Using a measure of industrial competitiveness (Ci)**

**BLANK PAGE**