



UNIVERSITY OF CAMBRIDGE INTERNATIONAL EXAMINATIONS  
 General Certificate of Education  
 Advanced Subsidiary Level and Advanced Level

CANDIDATE  
 NAME

CENTRE  
 NUMBER

--	--	--	--	--

CANDIDATE  
 NUMBER

--	--	--	--



**BIOLOGY**

**9700/22**

Paper 2 Structured Questions AS

**October/November 2009**

**1 hour 15 minutes**

Candidates answer on the Question Paper.

Additional Materials:      Electronic calculator  
    Ruler (cm/mm)

**READ THESE INSTRUCTIONS FIRST**

Write your Centre number, candidate number and name in the spaces provided at the top of this page.  
 Write in dark blue or black pen.  
 You may use a soft pencil for any diagrams, graphs or rough working.  
 Do not use staples, paper clips, highlighters, glue or correction fluid.  
**DO NOT WRITE IN ANY BARCODES.**

Answer **all** questions.  
 At the end of the examination, fasten all your work securely together.  
 The number of marks is given in brackets [ ] at the end of each question or part question.

For Examiner's Use	
1	
2	
3	
4	
5	
6	
<b>Total</b>	

This document consists of **13** printed pages and **3** blank pages.



Answer **all** the questions.

- 1 (a) Cell surface membranes are involved with the movement of substances into and out of cells.

Calcium pumps in cell surface membranes maintain a concentration of calcium ions inside the cytoplasm that is a thousand times lower than outside the cell.

Fig. 1.1 shows the movement of calcium ions across a cell surface membrane.

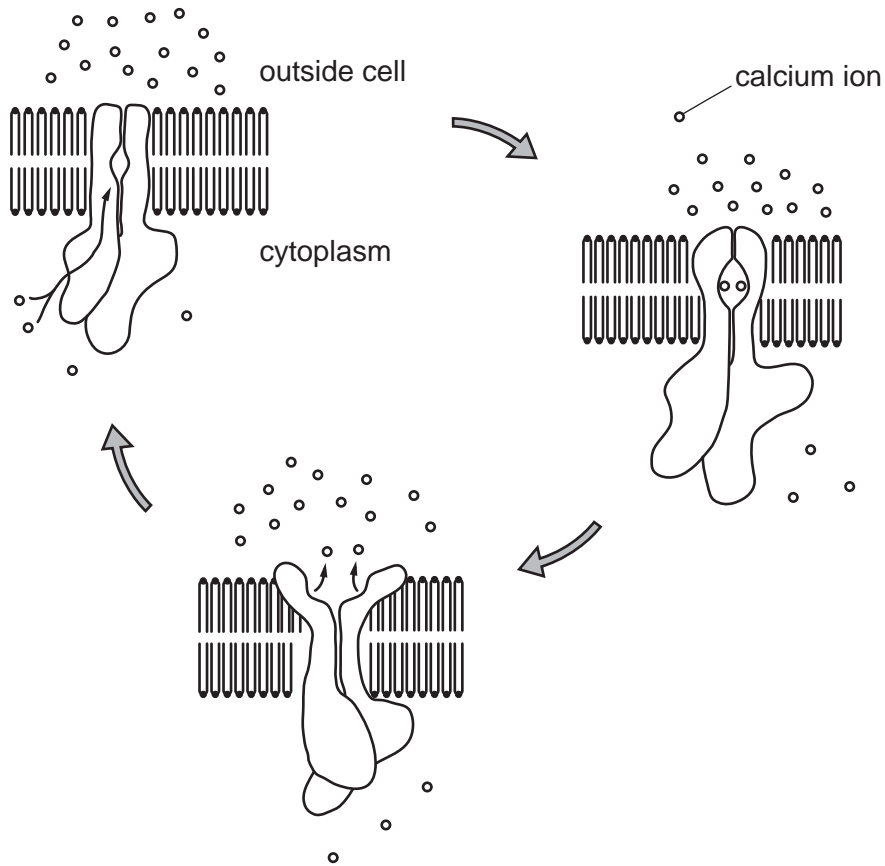


Fig. 1.1

With reference to Fig. 1.1,

- (i) explain why calcium ions do not pass through the phospholipid bilayer;

.....  
.....  
.....  
..... [2]

(ii) name and describe the process by which calcium ions are moved across the membrane.

*name* .....

*description* .....

.....

.....

.....

..... [3]

(b) Phagocytosis is the process by which bacteria are ingested by cells.

Describe the role of the cell surface membrane during phagocytosis.

.....

.....

.....

.....

.....

..... [3]

(c) Phagocytic cells contain many lysosomes.

Describe the function of lysosomes in destroying ingested bacterial cells.

.....

.....

.....

.....

.....

.....

.....

..... [4]

[Total: 12]

- 2 Sucrase is the enzyme that catalyses the hydrolysis of sucrose. A student investigated the effect of substrate concentration on the activity of this enzyme.

Six test-tubes were set up each containing  $10\text{cm}^3$  of different concentrations of sucrose solutions. The test-tubes were left in a water bath at  $30^\circ\text{C}$  for ten minutes.

After ten minutes,  $5\text{cm}^3$  of a sucrase solution at  $30^\circ\text{C}$  was added to each test-tube and the reaction mixtures were stirred.

After a further five minutes, the temperature of the water-bath was raised to above  $85^\circ\text{C}$  and the same volume of Benedict's solution added to each test-tube in turn. The student recorded the time when a green colour first became visible in each test-tube.

The concentrations used and the student's results are shown in Table 2.1.

**Table 2.1**

concentration of sucrose/ $\text{g dm}^{-3}$	time taken for green colour to appear / s
5	278
10	145
15	95
20	75
50	47
100	45

- (a) Explain why the temperature of the water-bath was raised to above  $85^\circ\text{C}$ .

.....

.....

.....

..... [2]



3 (a) Explain why it is important that the daughter cells produced during a mitotic cell cycle in humans are genetically identical.

.....  
.....  
.....  
..... [2]

(b) Name two factors that increase the chance that a cancer cell will develop.

1 .....  
2 ..... [2]

(c) Fig. 3.1 shows a cancer cell in the process of cell division.

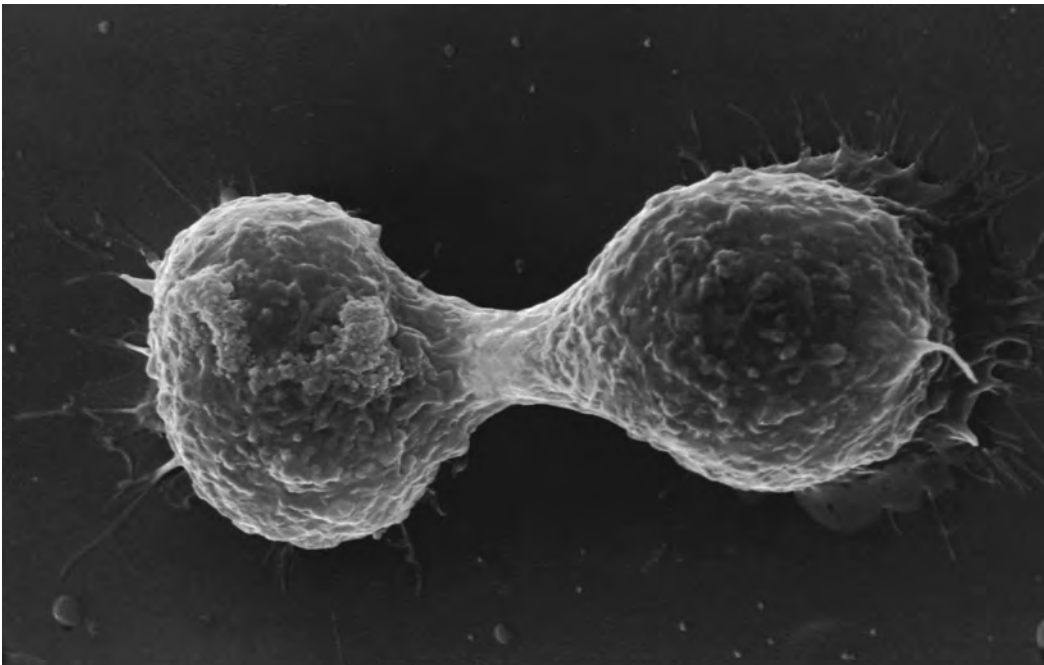


Fig. 3.1

With reference to Fig. 3.1,

(i) state the stage of cell division;

..... [1]

(ii) describe what is happening to the cell during this stage of cell division;

.....  
.....  
.....  
.....  
.....  
.....  
.....  
..... [3]

(iii) describe how these cells develop into a tumour.

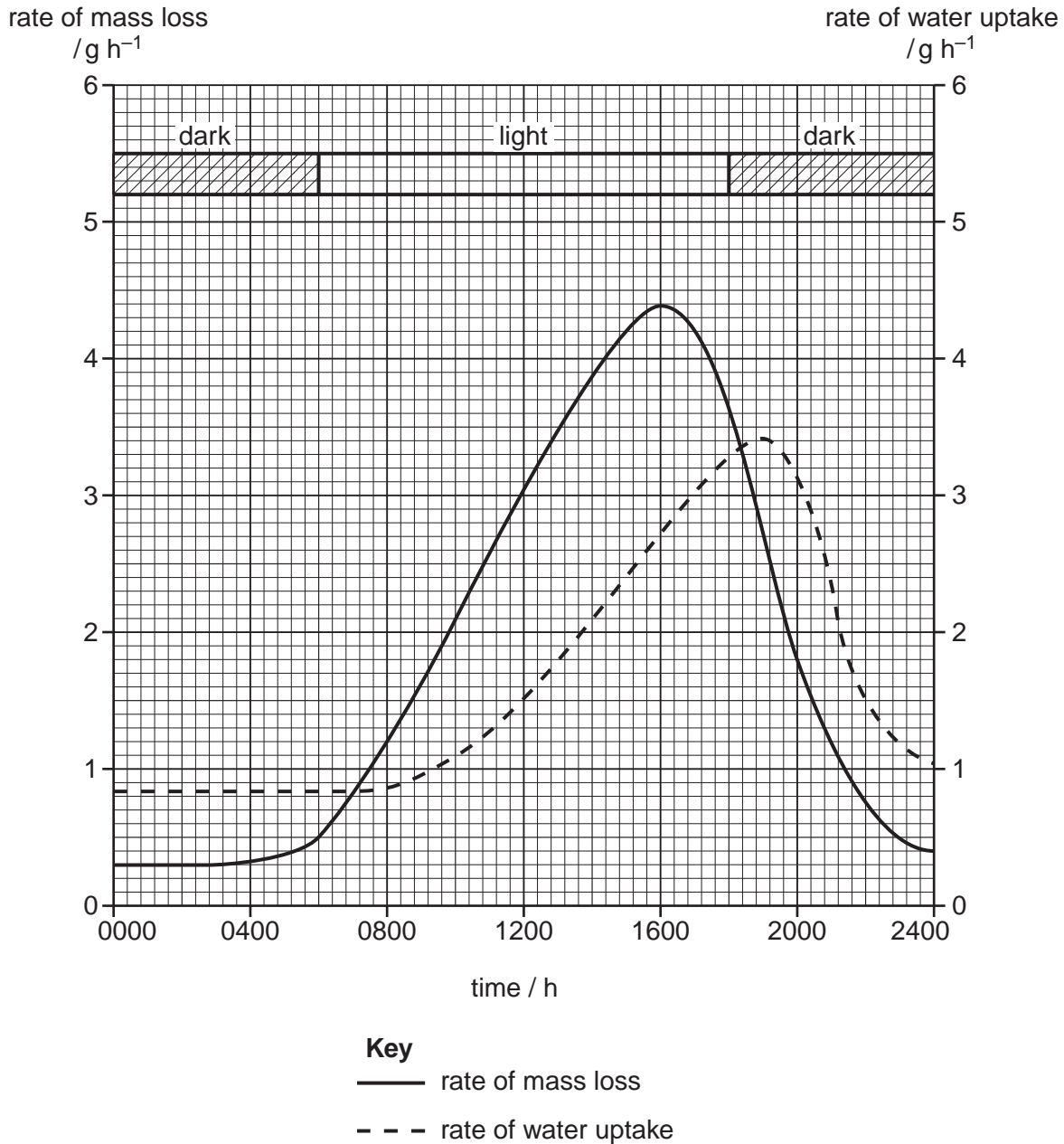
.....  
.....  
.....  
.....  
..... [2]

[Total: 10]

For  
Examiner's  
Use

- 4 A leafy twig was cut from a tree and the cut end immediately placed into water. The twig was then put into a potometer to measure the uptake of water. The potometer was placed on a balance to record changes in mass.

Fig. 4.1 shows the rate of water uptake and the rate of mass loss over a period of 24 hours. The graph also shows when it was light and when it was dark.



**Fig. 4.1**



**(a) (i)** Explain how water was lost from the leaves of the leafy twig.

.....  
.....  
.....  
.....  
.....  
.....  
..... [3]

**(ii)** With reference to Fig. 4.1, describe how the rates of water uptake and water loss change during the 24 hour period.

.....  
.....  
.....  
.....  
.....  
.....  
.....  
.....  
.....  
.....  
..... [4]

**(b)** Explain the mechanism by which water is transported in the xylem of the leafy twig while in the potometer.

.....  
.....  
.....  
.....  
.....  
.....  
.....  
.....  
..... [3]

[Total: 10]

- 5 *Candida albicans* is a yeast-like fungus that lives in human lungs. It is the causative agent of one of the opportunistic infections that may develop during AIDS.

For  
Examiner's  
Use

*C. albicans* is eukaryotic. Fig. 5.1 shows its structure.

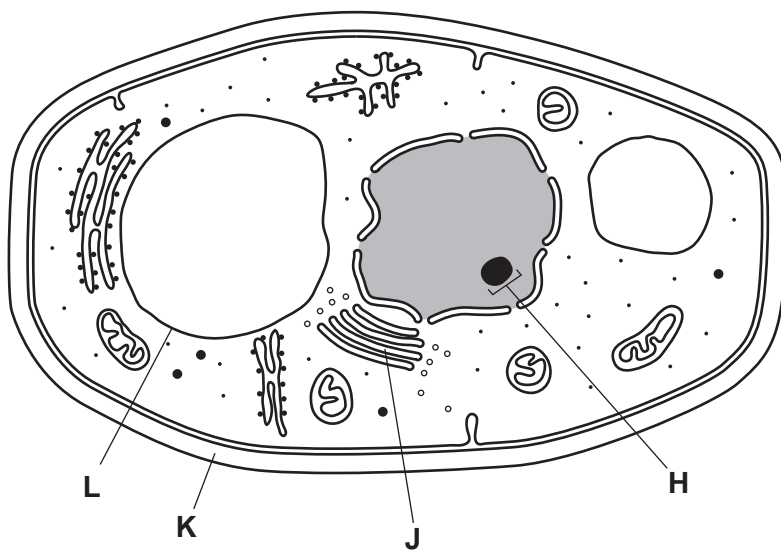


Fig. 5.1

- (a) (i) Name H to L.

H .....

J .....

K .....

L ..... [4]

- (ii) State two ways in which the **structure** of a prokaryotic cell differs from that shown in Fig. 5.1.

1 .....

.....

2 .....

..... [2]



6 (a) Explain what is meant by the term *community*.

.....

.....

.....

..... [2]

Fig. 6.1 shows the flow of energy through a woodland. All figures are in  $\text{kJ m}^{-2}$  per week.

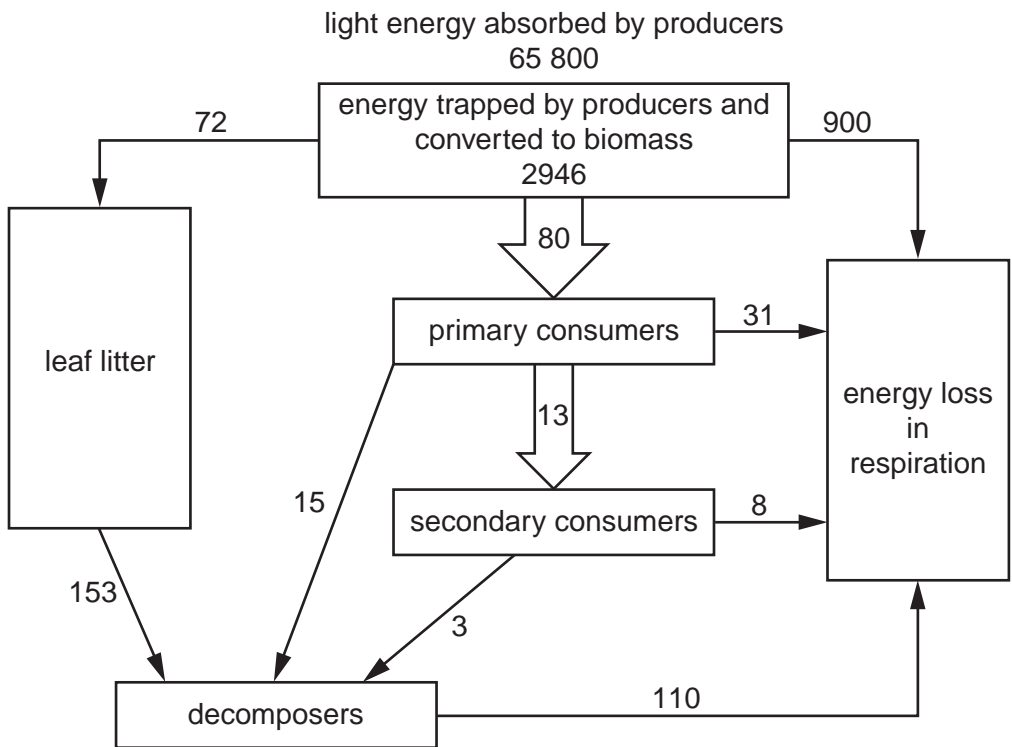


Fig. 6.1

(b) (i) Calculate the energy trapped by the producers and converted to biomass as a percentage of the light energy absorbed.

Express your answer to the nearest 0.1%.

Show your working.

Answer ..... % [2]

- (ii) Suggest, in terms of energy flow, why there are no tertiary consumers in the woodland.

.....  
.....  
.....  
..... [2]

- (iii) Leaf litter is composed of dead leaves and twigs. The total energy in the leaf litter was  $15899\text{kJm}^{-2}$  but only  $153\text{kJm}^{-2}$  per week is transferred to decomposers. When animal wastes rich in nitrogen were mixed with the leaf litter the energy flow to decomposers increased significantly.

Suggest why the addition of animal wastes rich in nitrogen increased the energy flow to decomposers.

.....  
.....  
.....  
.....  
.....  
..... [3]

[Total: 9]





**BLANK PAGE**

---

*Copyright Acknowledgements:*

Question 3 Fig. 3.1 © M122/283; Breast cancer cells, SEM; Science Photo Library.

Permission to reproduce items where third-party owned material protected by copyright is included has been sought and cleared where possible. Every reasonable effort has been made by the publisher (UCLES) to trace copyright holders, but if any items requiring clearance have unwittingly been included, the publisher will be pleased to make amends at the earliest possible opportunity.

University of Cambridge International Examinations is part of the Cambridge Assessment Group. Cambridge Assessment is the brand name of University of Cambridge Local Examinations Syndicate (UCLES), which is itself a department of the University of Cambridge.