



UNIVERSITY OF CAMBRIDGE INTERNATIONAL EXAMINATIONS
 General Certificate of Education
 Advanced Subsidiary Level and Advanced Level

CANDIDATE
 NAME

CENTRE
 NUMBER

| | | | | |
|--|--|--|--|--|
| | | | | |
|--|--|--|--|--|

CANDIDATE
 NUMBER

| | | | |
|--|--|--|--|
| | | | |
|--|--|--|--|



BIOLOGY

9700/21

Paper 2 Structured Questions AS

May/June 2011

1 hour 15 minutes

Candidates answer on the Question Paper.

No Additional Materials are required.

READ THESE INSTRUCTIONS FIRST

Write your Centre number, candidate number and name in the spaces provided at the top of the page.

Write in dark blue or black ink.

You may use a soft pencil for any diagrams, graphs or rough working.

Do not use red ink, staples, paper clips, highlighters, glue or correction fluid.

DO **NOT** WRITE IN ANY BARCODES.

Answer **all** questions.

At the end of the examination, fasten all your work securely together.

The number of marks is given in brackets [] at the end of each question or part question.

| For Examiner's Use | |
|--------------------|--|
| 1 | |
| 2 | |
| 3 | |
| 4 | |
| 5 | |
| 6 | |
| Total | |

This document consists of **15** printed pages and **1** blank page.



Answer **all** the questions.

1 Fig. 1.1 is an electron micrograph of cells from the ciliated epithelium of the trachea.



Fig. 1.1

(a) Calculate the magnification of the electron micrograph in Fig. 1.1.

Show your working and express your answer to the nearest whole number.

magnification × [2]

(b) Explain how the cells labelled **A** and the structures labelled **B** in Fig. 1.1 protect the lining of the trachea.

*For
Examiner's
Use*

.....
.....
.....
.....
.....
.....
.....
.....
.....
.....
.....
.....
.....
.....
.....
.....
.....
.....
.....
.....[4]

(c) Cells, such as **C**, at the base of the epithelium of the trachea divide by mitosis.

Describe the changes that occur within the cell between the beginning of prophase and the end of metaphase.

.....
.....
.....
.....
.....
.....
.....
.....
.....
.....
.....
.....
.....
.....
.....
.....
.....
.....
.....
.....
.....
.....[5]

[Total: 11]

2 (a) Carbon dioxide is transported in the blood in various forms.

Describe how carbon dioxide molecules reach red blood cells from respiring cells.

.....

.....

.....

..... [2]

Fig. 2.1 shows part of a capillary network and some cells of the surrounding tissue.

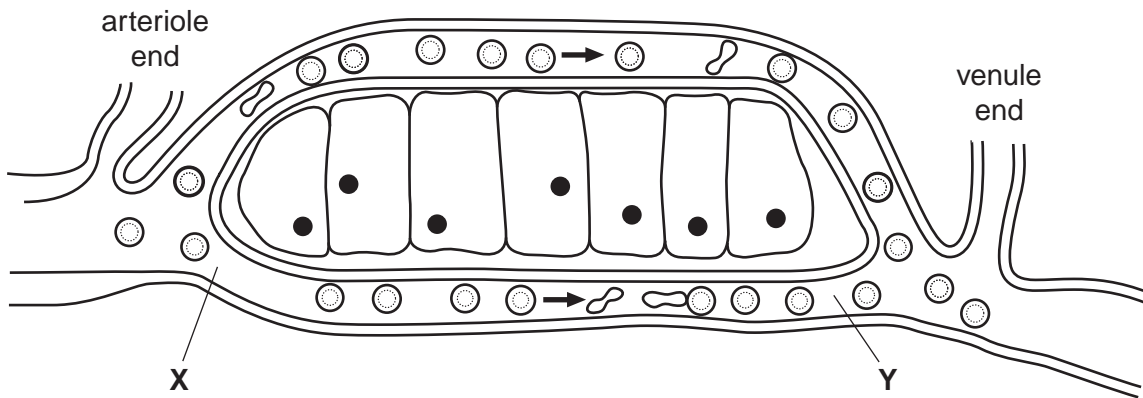


Fig. 2.1

(b) State three ways in which the blood at Y differs from the blood at X **other than** in the concentration of carbon dioxide.

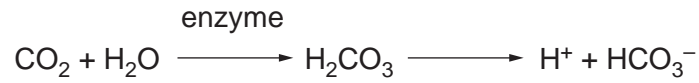
1.

2.

3. [3]

An enzyme in red blood cells catalyses the reaction between carbon dioxide and water as blood flows through respiring tissues.

For
Examiner's
Use



(c) (i) Name the enzyme that catalyses this reaction.

..... [1]

(ii) Explain the significance of this reaction in the transport of carbon dioxide.

.....

 [3]

(d) Fig. 2.2 shows the effect of increasing the carbon dioxide concentration on the oxygen haemoglobin dissociation curve.

For
Examiner's
Use

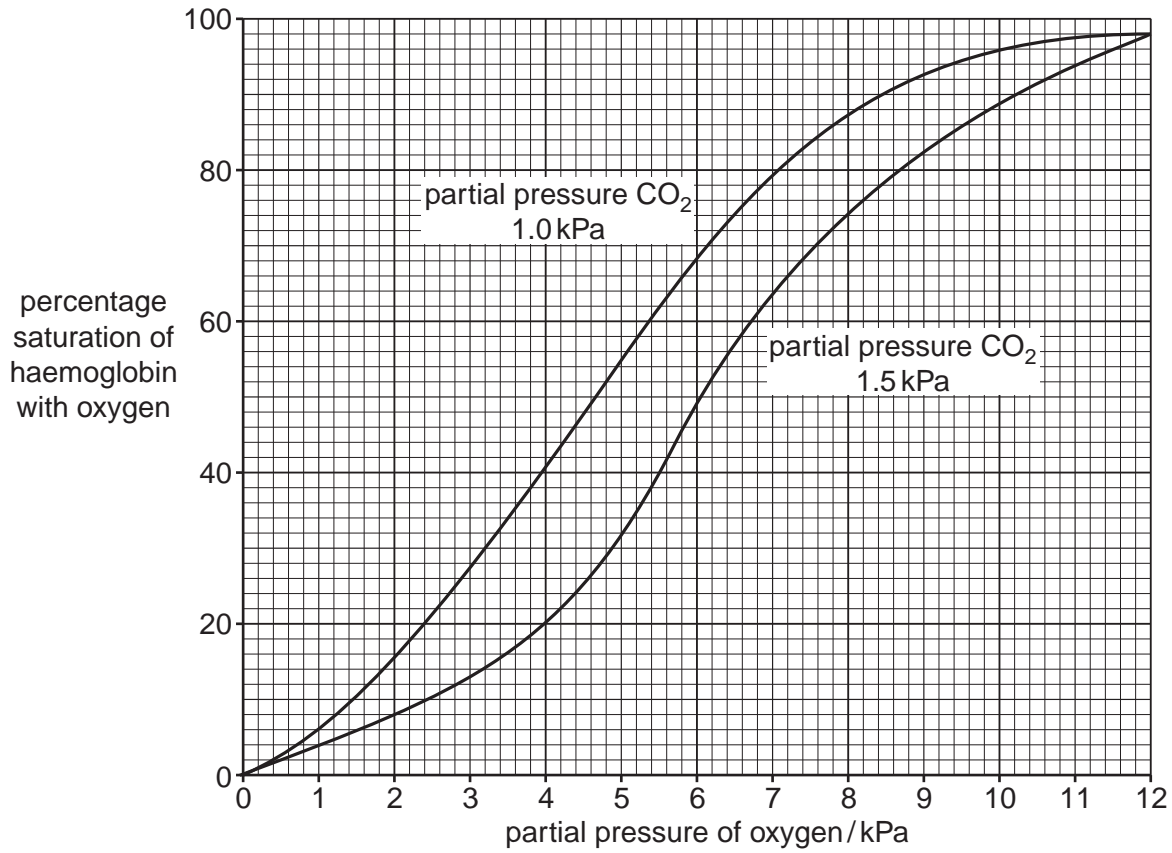


Fig. 2.2

(i) State the percentage saturation of haemoglobin with oxygen at a partial pressure of 5 kPa of oxygen when the partial pressure of carbon dioxide is:

1.0 kPa

1.5 kPa [1]

(ii) The percentage saturation of haemoglobin with oxygen **decreases** as the partial pressure of carbon dioxide increases.

Explain how this happens.

.....

 [2]

(iii) Name the effect of increasing carbon dioxide concentration on the oxygen dissociation curve.

.....[1]

(iv) Explain the importance of the effect of carbon dioxide on haemoglobin as shown in Fig. 2.2.

.....
.....
.....
.....
.....
.....
.....[3]

[Total: 16]

- 3 A molecule of messenger RNA (mRNA) was produced during the transcription of a gene. Part of the template sequence of DNA was ATGC.

Fig. 3.1 shows the part of the molecule of messenger RNA corresponding to that sequence of four bases.

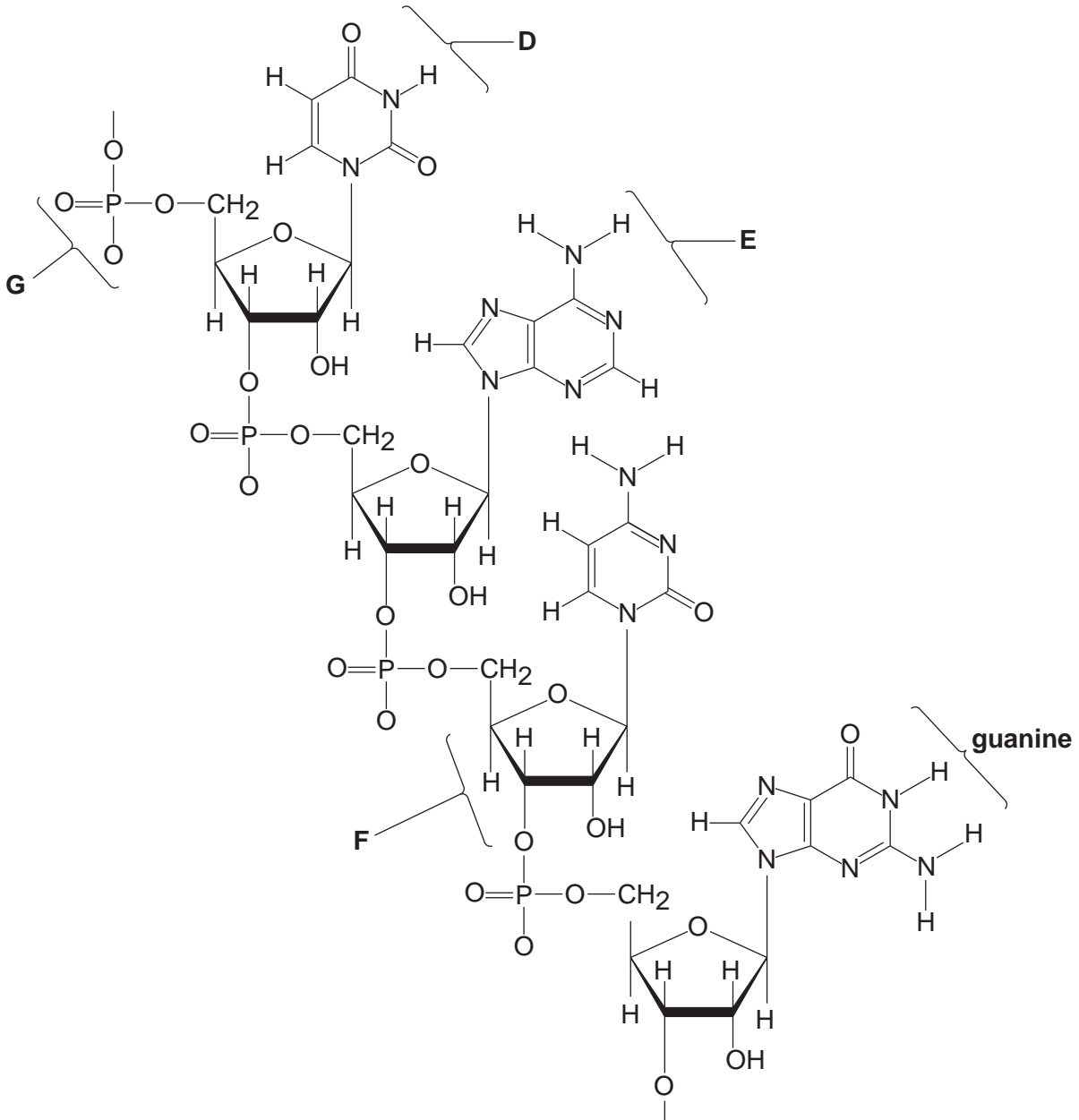


Fig. 3.1

- (a) Name the parts of the mRNA molecule shown in Fig. 3.1 labelled D, E, F and G.

D

E

F

G [4]

(b) Complete the table to show **three** ways in which mRNA differs from DNA.

For
Examiner's
Use

| | mRNA | DNA |
|---|------|-----|
| 1 | | |
| 2 | | |
| 3 | | |

[3]

(c) Describe the role of mRNA after it leaves the nucleus and enters the cytoplasm of a eukaryotic cell.

.....

.....

.....

.....

.....

.....

.....

.....

.....

.....

.....

..... [4]

[Total: 11]

4 The enzyme sucrase catalyses the breakdown of the glycosidic bond in sucrose.

For
Examiner's
Use

A student investigated the effect of increasing the concentration of sucrose on the rate of activity of sucrase.

Ten test-tubes were set up with each containing 5 cm³ of different concentrations of a sucrose solution. The test-tubes were placed in a water bath at 40 °C for ten minutes. A flask containing a sucrase solution was also put into the water bath.

After ten minutes, 1 cm³ of the sucrase solution was added to each test-tube. The reaction mixtures were kept at 40 °C for a further ten minutes.

After ten minutes, the temperature of the water bath was raised to boiling point. Benedict's solution was added to each test-tube. The time taken for a colour change was recorded and used to calculate rates of enzyme activity.

The results are shown in Fig. 4.1.

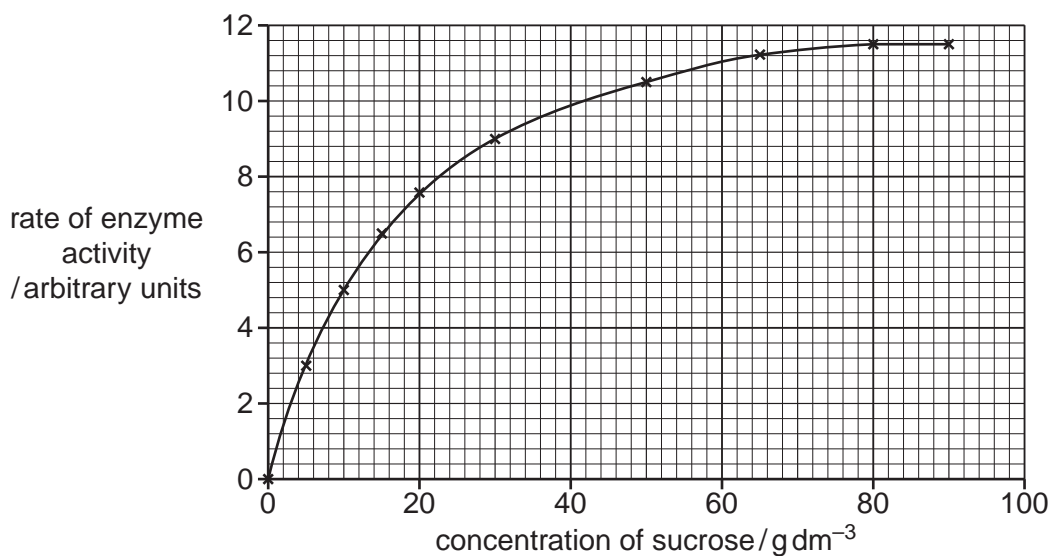


Fig. 4.1

(a) (i) Name the type of reaction catalysed by sucrase.

.....[1]

(ii) Explain why the temperature of the water was raised to boiling point.

.....

[2]

5 Fig. 5.1 shows five different biological molecules.

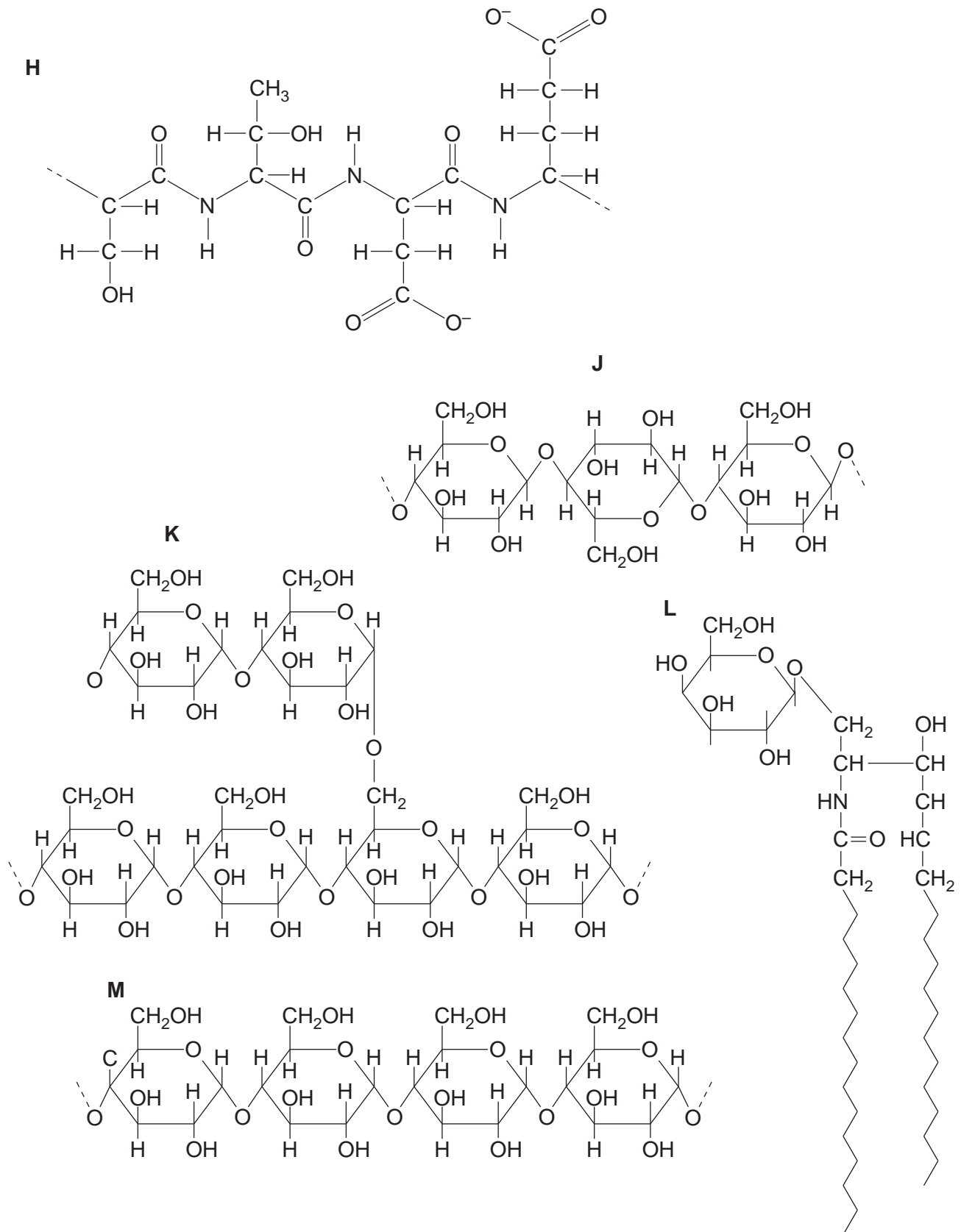


Fig. 5.1

Complete Table 5.1 by indicating which molecule matches each statement.

You may use each letter (**H** to **M**) once, more than once or not at all.

You should write only one letter in each box.

Table 5.1

| statement | letter |
|---|--------|
| contains peptide bonds | |
| part of the molecule forms the hydrophobic part of cell membranes | |
| contains 1-4 and 1-6 glycosidic bonds | |
| forms the primary structure of a protein | |
| used for energy storage in plants | |
| forms a helical structure | |
| the sub-unit molecule is β -glucose | |

[Total: 7]

For
Examiner's
Use

6 Measles is a common viral infection. A vaccine has been available for measles since the 1960s. There are vaccination programmes for many diseases including measles. Babies are born with a passive immunity to measles so the vaccine is not given in the first few months after birth.

(a) Explain how active immunity differs from passive immunity.

.....
.....
.....
.....
.....
..... [3]

(b) Explain why the vaccine for measles is not given in the first few months of a child's life.

.....
.....
.....
..... [2]

The World Health Organization (WHO) publishes data on the vaccination programmes for infectious diseases. The WHO recommends vaccination rates of over 90% of children.

Each health authority in a country reports its success in vaccinating children in their district. The WHO uses these figures to estimate the percentage of districts in each country that vaccinate 90% of children against measles.

The WHO also collects statistics on death rates of children under the age of 5 from all causes, including infectious diseases.

Fig. 6.1 shows these statistics for 24 countries for the year 2007.

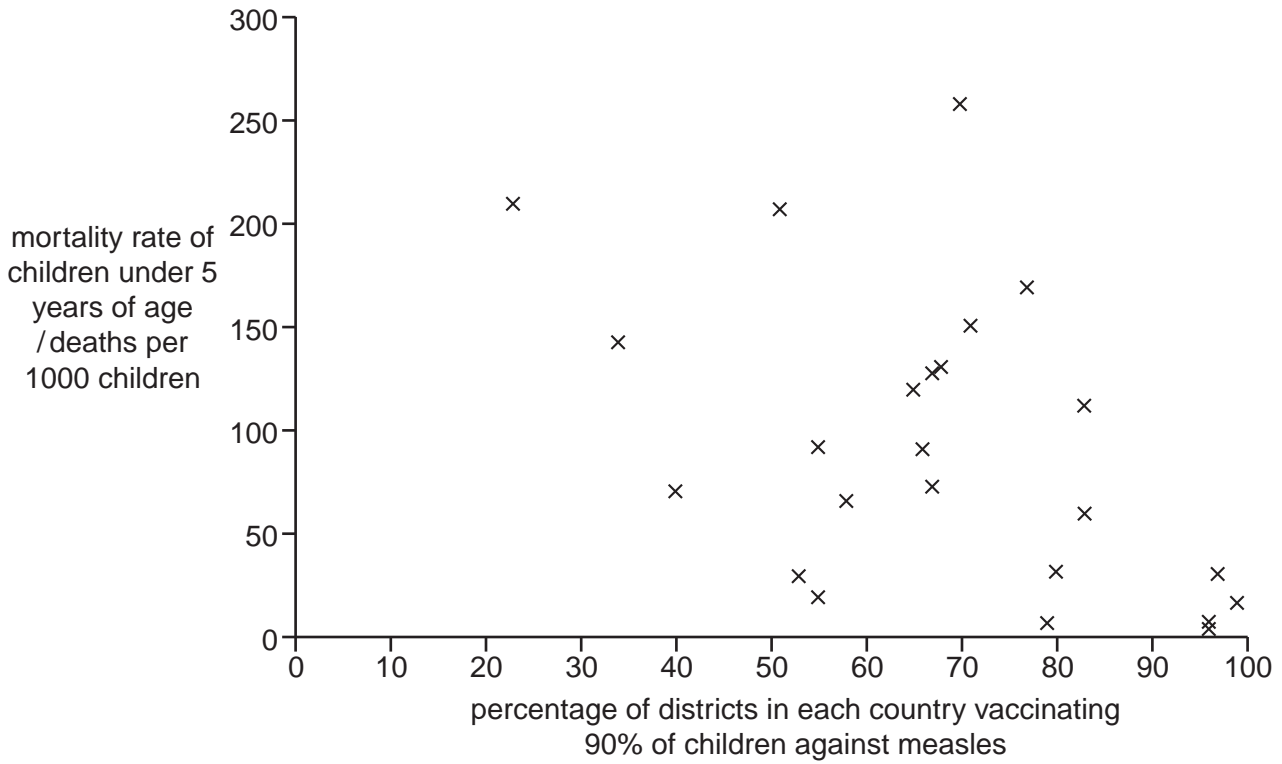


Fig. 6.1

(c) Use the information in Fig. 6.1 to explain why the WHO recommends immunisation of 90% of children.

.....

.....

.....

.....

.....

.....

.....

.....

.....

.....

.....

[2]

[Total: 7]

Copyright Acknowledgements:

Fig. 1.1 © Image taken by Prof. H. Wartenberg from Dr. Jastrow's electron microscope atlas on <http://www.drjastrow.de>.

Permission to reproduce items where third-party owned material protected by copyright is included has been sought and cleared where possible. Every reasonable effort has been made by the publisher (UCLES) to trace copyright holders, but if any items requiring clearance have unwittingly been included, the publisher will be pleased to make amends at the earliest possible opportunity.

University of Cambridge International Examinations is part of the Cambridge Assessment Group. Cambridge Assessment is the brand name of University of Cambridge Local Examinations Syndicate (UCLES), which is itself a department of the University of Cambridge.