

## MARK SCHEME for the October/November 2008 question paper

### **9713 APPLIED ICT**

**9713/02**

Paper 2 (Practical Test A), maximum raw mark 120

This mark scheme is published as an aid to teachers and candidates, to indicate the requirements of the examination. It shows the basis on which Examiners were instructed to award marks. It does not indicate the details of the discussions that took place at an Examiners' meeting before marking began.

All Examiners are instructed that alternative correct answers and unexpected approaches in candidates' scripts must be given marks that fairly reflect the relevant knowledge and skills demonstrated.

Mark schemes must be read in conjunction with the question papers and the report on the examination.

- CIE will not enter into discussions or correspondence in connection with these mark schemes.

CIE is publishing the mark schemes for the October/November 2008 question papers for most IGCSE, GCE Advanced Level and Advanced Subsidiary Level syllabuses and some Ordinary Level syllabuses.

<b>Page 2</b>	<b>Mark Scheme</b>	<b>Syllabus</b>	<b>Paper</b>
	<b>GCE A/AS LEVEL – October/November 2008</b>	<b>9713</b>	<b>02</b>

No marks to be awarded for any printout not containing the candidate name, candidate number and Centre number

### Step 3

#### Candidate name, Centre number and candidate number

NBEMPLOY : Table	
Field Name	Data Type
PayNumber	Text
Fname	Text
Sname	Text
BranchCode	Number
JobCode	Number

Table created  
 Correct fields 1 mark  
 3 text fields 1 mark  
 2 number fields 1 mark  
 Primary key correct 1 mark

Microsoft Access - [N8JOB : Table]	
Field Name	Data Type
Job	Number
Description	Text
Rate	Number

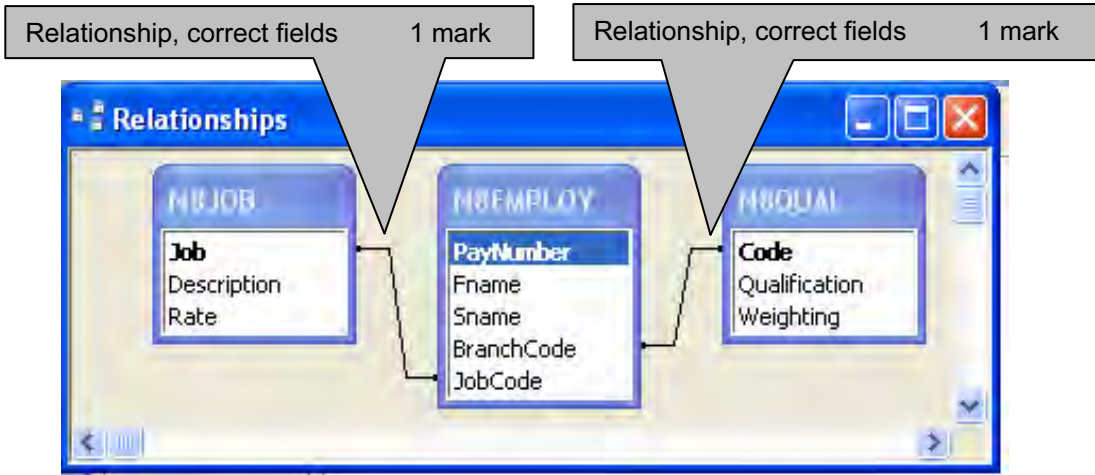
Table created  
 Correct fields & field types 1 mark  
 Primary key correct 1 mark

Microsoft Access - [N8QUAL : Table]	
Field Name	Data Type
Code	Number
Qualification	Text
Weighting	Number

Table created  
 Correct fields & field types 1 mark  
 Primary key correct 1 mark

**Step 5**

Candidate name, Centre number and candidate number



Relationship, correct type 1 mark

Relationship, correct type 1 mark

Page 4	Mark Scheme	Syllabus	Paper
	GCE A/AS LEVEL – October/November 2008	9713	02

### Step 7

Candidate name, Centre number and candidate number

In header 1 mark

### List of managers

Title 100% correct 1 mark

Qualification	Description	Fname	Sname
ADHM	Sales Manager	Ritu	Liu
AHM	Restaurant Manager	Shruti	Di Vizio
AHM	Human Resources Manager	Adheesh	Agrawal
AHM	IS Manager	Arjeet	Ravi
HCAT	Kids Club Manager	Keshav	Shoaib
HCAT	Housekeeping Manager	Kratika	Gupta
NVQ L1	Shop Manager	Nripesh	Ratwani
NVQ L1	Entertainment Manager	Nedeem	Nainani
NVQ L1	Assistant Manager	Mohamed	Surit
NVQ L2	Assistant Sales Manager	Ahmed	Malviya
NVQ L3	Assistant Restaurant Manager	Siddharth	Khan
NVQ L3	Catering Manager	Siddharth	Afana
NVQ L4	General Manager	Siddharth	Gad

Wildcard search on Manager 2 marks  
 No marks unless correct wildcard search  
 Sorted ascending on qualification 1 mark  
 Correct 4 fields only & fully visible 1 mark

<b>Page 5</b>	<b>Mark Scheme</b>	<b>Syllabus</b>	<b>Paper</b>
	<b>GCE A/AS LEVEL – October/November 2008</b>	<b>9713</b>	<b>02</b>

### Step 10

In header 1 mark

#### Candidate name, Centre number and candidate number

Selection criteria NVQ L1, NVQ L2, NVQ L3 or NVQ L4	2 marks
Column headings Qualification names	1 mark

#### Number of NVQ qualifications

Title 100% correct 1 mark

Description	NVQ L1	NVQ L2	NVQ L3	NVQ L4
Assistant Manager	1			
Assistant Restaurant Manager			1	
Assistant Sales Manager		1		
Catering Manager			1	
Chef	1			
Company Secretary		1		
Entertainer	11			
Entertainment Manager	1			
Financial Director	1	2		
Gardener	2			
General Manager				1
Housekeeping	1		1	
IS Technician			1	
Lifeguard	3			
Maintenance	2	2		
Maintenance Supervisor		1		
Porter	1			
Receptionist		1		
Retail Salesperson	3			
Sales Assistant		8		
Security	1			
Shop Manager	1			
Temporary staff	1			

Cross tab	
Created	2 marks
Values as shown	2 marks
Row headings	
Descriptions	1 mark

Page 6	Mark Scheme	Syllabus	Paper
	GCE A/AS LEVEL – October/November 2008	9713	02

## Step 18

# Rates of pay for catering employees

Title 100% correct 1 mark

Pay Field  
 Calculated at run time 2 marks  
 Rate x weighting (figures as shown) 2 marks

Qualification	PayNumber	Fname	Sname	Description	Pay
AHM					
	TB0070	Ankur	Pavia	Catering Assistant	33600
	TB0028	Sagar	Gupta	Assistant Chef	96621
	TB0023	Shruti	Di Vizio	Restaurant Manager	108150
	TB0006	Mohammed	Amen	Chef	111615
	TB0005	Ruksana	Akhtar	Catering Assistant	33600
	TB0004	Chantal	Ahmad	Souffle Chef	94710
Summary for 'Qualification' = AHM (6 detail records)					
<b>Sum</b>					<b>478296</b>
DHM					
	TB0010	Shashank	Ashwani	Chef	143505
Summary for 'Qualification' = DHM (1 detail record)					
<b>Sum</b>					<b>143505</b>
NVQ L1					
	TB0017	Majid	Chauhan	Chef	116930
Summary for 'Qualification' = NVQ L1 (1 detail record)					
<b>Sum</b>					<b>116930</b>
NVQ L3					
	TB0044	Siddharth	Khan	Assistant Restaurant	103068
	TB0001	Siddharth	Afana	Catering Manager	173600
Summary for 'Qualification' = NVQ L3 (2 detail records)					
<b>Sum</b>					<b>276668</b>
<b>Grand Total</b>					<b>1015399</b>

By A Candidate, Candidate 99999, Centre XX999

Selection criteria  
 JobCode >53 & <80 (these jobs only) 2 marks  
 Fields  
 Only these 6 fields shown 1 mark  
 Grouping  
 Grouped by qualification 2 marks  
 Group footer – correct subtotal 2 marks  
 Report footer  
 Name, centre no, candidate number 1 mark  
 Calculated control for sum (correct) 2 marks  
 Single page & fully visible 1 mark  
 Subtotals and Total in bold font 1 mark

Step 20

Title 100% correct 1 mark

## Catering employees summary

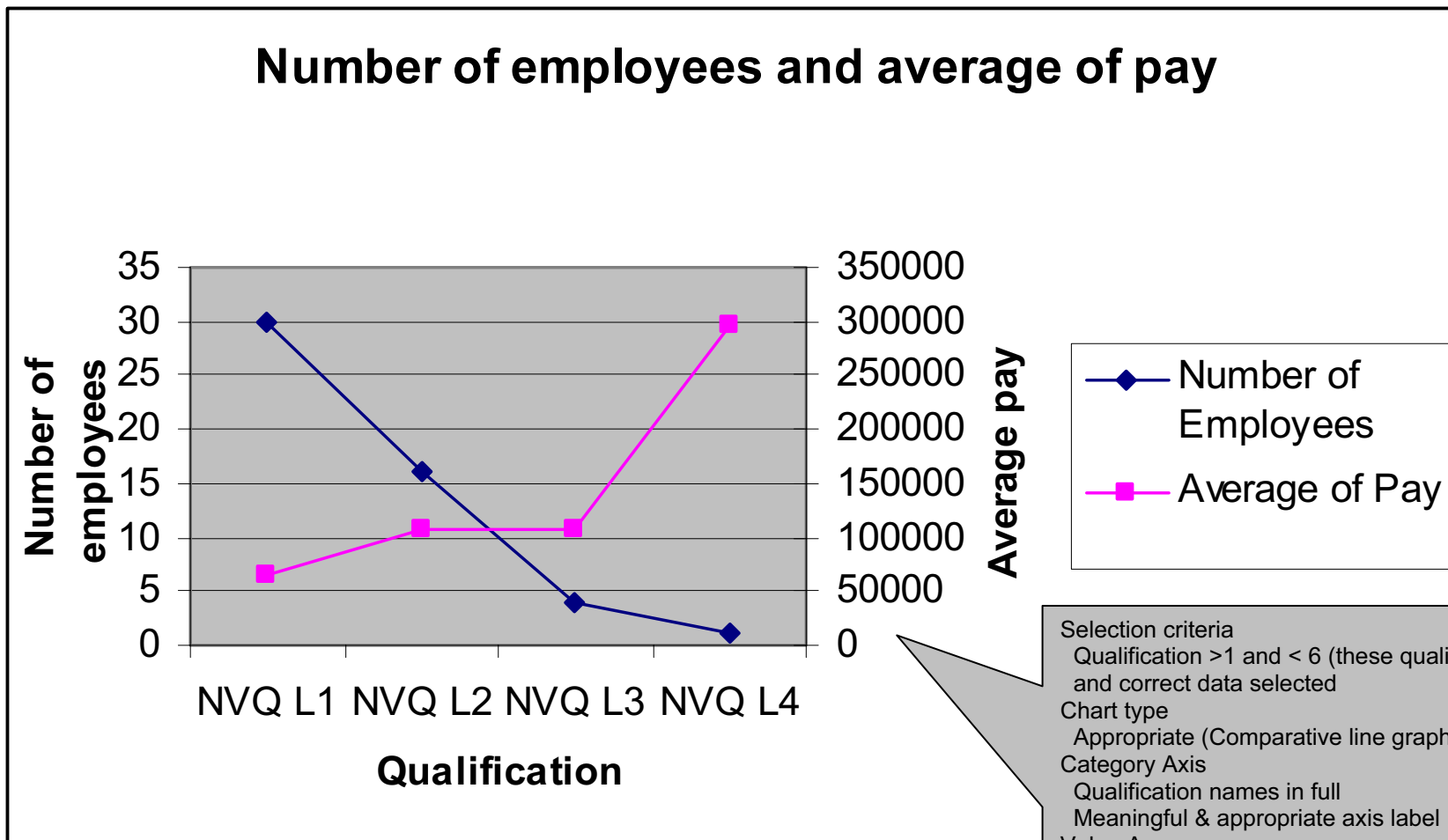
Qualification	PayNumber	Fname	Sname	Description	Pay
AHM	TB0070			Catering Assistant	
	TB0028			Assistant Chef	
	TB0023			Restaurant Manager	
	TB0006			Chef	
	TB0005			Catering Assistant	
	TB0004			Souffle Chef	
Summary for 'Qualification' = AHM (6 detail records)					
<b>Sum</b>					<b>478296</b>
DHM	TB0010			Chef	
Summary for 'Qualification' = DHM (1 detail record)					
<b>Sum</b>					<b>143505</b>
NVQ L1	TB0017			Chef	
Summary for 'Qualification' = NVQ L1 (1 detail record)					
<b>Sum</b>					<b>116930</b>
NVQ L3	TB0044			Assistant Restaurant Manage	
	TB0001			Catering Manager	
Summary for 'Qualification' = NVQ L3 (2 detail records)					
<b>Sum</b>					<b>276668</b>
<b>Grand Total</b>					<b>1015399</b>

Fname 'black text and background' 1 mark  
 Sname 'black text and background' 1 mark

Individual pay figures invisible 1 mark  
 Subtotals and total still as original print 1 mark

Step 23

Candidate name, Centre number and candidate number



- Selection criteria
  - Qualification >1 and < 6 (these qualifications only) and correct data selected 2 marks
  - Chart type
  - Appropriate (Comparative line graph) 2 marks
  - Category Axis
  - Qualification names in full 1 mark
  - Meaningful & appropriate axis label 1 mark
  - Value Axes
  - 2 axes shown 1 mark
  - Meaningful & appropriate axis labels 2 marks
  - Chart Title
  - Meaningful & appropriate chart title 1 mark
  - Title of appropriate size 1 mark
  - Series labels
  - Visible, correct and appropriate 2 marks
- (may be awarded) [www.theallpapers.com](http://www.theallpapers.com)



Step 36

**Rooms requiring a fridge**

Title 100% correct 1 mark

Search Fridge = 0 2 marks

Formatting  
 Row 7 and column A – centre 1 mark  
 Row 7 and column A – bold and italic 1 mark  
 Last 4 columns Sri Lanka rupees 1 mark  
 2 dp 1 mark

<i>Single</i>	42
<i>Double</i>	80
<i>Both</i>	41
<i>Fridge</i>	3
<i>Television</i>	2

Room	Code	Guest	Basic	Fridge	Television	Total
109	2DNNNPNA	2	LKR 160.00	LKR 0.00	LKR 0.00	LKR 160.00
110	2DNNNPNA	2	LKR 160.00	LKR 0.00	LKR 0.00	LKR 160.00
114	3DNTNNA	3	LKR 240.00	LKR 0.00	LKR 2.00	LKR 242.00
115	3DNTNNA	3	LKR 240.00	LKR 0.00	LKR 2.00	LKR 242.00
118	3DNTNNA	3	LKR 240.00	LKR 0.00	LKR 2.00	LKR 242.00
207	2DNTNPNA	2	LKR 160.00	LKR 0.00	LKR 2.00	LKR 162.00
209	2DNNNPNA	2	LKR 160.00	LKR 0.00	LKR 0.00	LKR 160.00
210	2DNNNPNA	2	LKR 160.00	LKR 0.00	LKR 0.00	LKR 160.00
305	2DNTNSNA	2	LKR 160.00	LKR 0.00	LKR 2.00	LKR 162.00
309	2DNNNPNA	2	LKR 160.00	LKR 0.00	LKR 0.00	LKR 160.00
310	2DNNNPNA	2	LKR 160.00	LKR 0.00	LKR 0.00	LKR 160.00
317	3DNTNNA	3	LKR 240.00	LKR 0.00	LKR 2.00	LKR 242.00
409	2DNNNPNA	2	LKR 160.00	LKR 0.00	LKR 0.00	LKR 160.00
410	2DNNNPNA	2	LKR 160.00	LKR 0.00	LKR 0.00	LKR 160.00
512	4BNTBNA	4	LKR 164.00	LKR 0.00	LKR 2.00	LKR 166.00

Single page 1 mark  
 All visible 1 mark

**Candidate name, Centre number and candidate number**

In footer 1 mark

Page 10	Mark Scheme	Syllabus	Paper
	GCE A/AS LEVEL – October/November 2008	9713	02

### Step 38

#### Formulae Used

Title 100% correct 1 mark

	A	B	C	D
1	<b>Single</b>	42		
2	<b>Double</b>	80		
3	<b>Both</b>	41		
4	<b>Fridge</b>	3		
5	<b>Television</b>	2		
6				
7	<b>Room</b>	<b>Code</b>	<b>Guest</b>	<b>Basic</b>
16	<b>109</b>	2DNNNPNA	=VALUE(MID(B16,1,1))	=IF(MID(B16,2,1)="D",DBL*C16,IF(MID(B16,2,1)="S",SGL*C16,IF(MID(B16,2,1)="B",BTH*C16,0)))
17	<b>110</b>	2DNNNPNA	=VALUE(MID(B17,1,1))	=IF(MID(B17,2,1)="D",DBL*C17,IF(MID(B17,2,1)="S",SGL*C17,IF(MID(B17,2,1)="B",BTH*C17,0)))
21	<b>114</b>	3DNTNNA	=VALUE(MID(B21,1,1))	=IF(MID(B21,2,1)="D",DBL*C21,IF(MID(B21,2,1)="S",SGL*C21,IF(MID(B21,2,1)="B",BTH*C21,0)))
22	<b>115</b>	3DNTNNA	=VALUE(MID(B22,1,1))	=IF(MID(B22,2,1)="D",DBL*C22,IF(MID(B22,2,1)="S",SGL*C22,IF(MID(B22,2,1)="B",BTH*C22,0)))
25	<b>118</b>	3DNTNNA	=VALUE(MID(B25,1,1))	=IF(MID(B25,2,1)="D",DBL*C25,IF(MID(B25,2,1)="S",SGL*C25,IF(MID(B25,2,1)="B",BTH*C25,0)))
32	<b>207</b>	2DNTNPNA	=VALUE(MID(B32,1,1))	=IF(MID(B32,2,1)="D",DBL*C32,IF(MID(B32,2,1)="S",SGL*C32,IF(MID(B32,2,1)="B",BTH*C32,0)))
34	<b>209</b>	2DNNNPNA	=VALUE(MID(B34,1,1))	=IF(MID(B34,2,1)="D",DBL*C34,IF(MID(B34,2,1)="S",SGL*C34,IF(MID(B34,2,1)="B",BTH*C34,0)))
35	<b>210</b>	2DNNNPNA	=VALUE(MID(B35,1,1))	=IF(MID(B35,2,1)="D",DBL*C35,IF(MID(B35,2,1)="S",SGL*C35,IF(MID(B35,2,1)="B",BTH*C35,0)))
48	<b>305</b>	2DNTNSNA	=VALUE(MID(B48,1,1))	=IF(MID(B48,2,1)="D",DBL*C48,IF(MID(B48,2,1)="S",SGL*C48,IF(MID(B48,2,1)="B",BTH*C48,0)))
52	<b>309</b>	2DNNNPNA	=VALUE(MID(B52,1,1))	=IF(MID(B52,2,1)="D",DBL*C52,IF(MID(B52,2,1)="S",SGL*C52,IF(MID(B52,2,1)="B",BTH*C52,0)))
53	<b>310</b>	2DNNNPNA	=VALUE(MID(B53,1,1))	=IF(MID(B53,2,1)="D",DBL*C53,IF(MID(B53,2,1)="S",SGL*C53,IF(MID(B53,2,1)="B",BTH*C53,0)))
60	<b>317</b>	3DNTNNA	=VALUE(MID(B60,1,1))	=IF(MID(B60,2,1)="D",DBL*C60,IF(MID(B60,2,1)="S",SGL*C60,IF(MID(B60,2,1)="B",BTH*C60,0)))
70	<b>409</b>	2DNNNPNA	=VALUE(MID(B70,1,1))	=IF(MID(B70,2,1)="D",DBL*C70,IF(MID(B70,2,1)="S",SGL*C70,IF(MID(B70,2,1)="B",BTH*C70,0)))
71	<b>410</b>	2DNNNPNA	=VALUE(MID(B71,1,1))	=IF(MID(B71,2,1)="D",DBL*C71,IF(MID(B71,2,1)="S",SGL*C71,IF(MID(B71,2,1)="B",BTH*C71,0)))
91	<b>512</b>	4BNTBNA	=VALUE(MID(B91,1,1))	=IF(MID(B91,2,1)="D",DBL*C91,IF(MID(B91,2,1)="S",SGL*C91,IF(MID(B91,2,1)="B",BTH*C91,0)))

Guest  
Mid or left function used 1 mark  
Correct cell reference 1 mark  
First position in string 1 mark  
1 character extraction 1 mark  
Turned into a numeric value 1 mark

Basic  
Mid function used 1 mark  
Correct cell reference 1 mark  
Second position in string 1 mark  
1 character extraction 1 mark  
Nested IF (or appropriate alternative) 2 marks  
D and correct formulae (works) 1 mark  
S and correct formulae (works) 1 mark  
B and correct formulae (works) 1 mark  
Any other returns 0 1 mark  
All 3 cells correct for column B reference (Allow named range) 1 mark  
All 3 cells correct for column C reference (Allow named range) 1 mark  
Correct named cells 3 marks

Candidate name, Centre number and candidate number

<b>Page 11</b>	<b>Mark Scheme</b>	<b>Syllabus</b>	<b>Paper</b>
	<b>GCE A/AS LEVEL – October/November 2008</b>	<b>9713</b>	<b>02</b>

<b>Fridge</b>		<b>Television</b>	
Mid function used	1 mark	Mid function used	1 mark
Correct cell reference	1 mark	Correct cell reference	1 mark
Third position in string	1 mark	4th position in string	1 mark
1 character extraction	1 mark	1 character extraction	1 mark
IF "F" then correct return	1 mark	IF "T" then correct return	1 mark
Correct named cell	1 mark	Correct named cell	1 mark
Any other returns 0	1 mark	Any other returns 0	1 mark

<b>Total</b>	
Correct addition	1 mark

5			
6			
7	<b>Fridge</b>	<b>Television</b>	<b>Total</b>
16	=IF(MID(B16,3,1)="F",FR,0)	=IF(MID(B16,4,1)="T",TV,0)	=D16+E16+F16
17	=IF(MID(B17,3,1)="F",FR,0)	=IF(MID(B17,4,1)="T",TV,0)	=D17+E17+F17
21	=IF(MID(B21,3,1)="F",FR,0)	=IF(MID(B21,4,1)="T",TV,0)	=D21+E21+F21
22	=IF(MID(B22,3,1)="F",FR,0)	=IF(MID(B22,4,1)="T",TV,0)	=D22+E22+F22
25	=IF(MID(B25,3,1)="F",FR,0)	=IF(MID(B25,4,1)="T",TV,0)	=D25+E25+F25
32	=IF(MID(B32,3,1)="F",FR,0)	=IF(MID(B32,4,1)="T",TV,0)	=D32+E32+F32
34	=IF(MID(B34,3,1)="F",FR,0)	=IF(MID(B34,4,1)="T",TV,0)	=D34+E34+F34
35	=IF(MID(B35,3,1)="F",FR,0)	=IF(MID(B35,4,1)="T",TV,0)	=D35+E35+F35
48	=IF(MID(B48,3,1)="F",FR,0)	=IF(MID(B48,4,1)="T",TV,0)	=D48+E48+F48
52	=IF(MID(B52,3,1)="F",FR,0)	=IF(MID(B52,4,1)="T",TV,0)	=D52+E52+F52
53	=IF(MID(B53,3,1)="F",FR,0)	=IF(MID(B53,4,1)="T",TV,0)	=D53+E53+F53
60	=IF(MID(B60,3,1)="F",FR,0)	=IF(MID(B60,4,1)="T",TV,0)	=D60+E60+F60
70	=IF(MID(B70,3,1)="F",FR,0)	=IF(MID(B70,4,1)="T",TV,0)	=D70+E70+F70
71	=IF(MID(B71,3,1)="F",FR,0)	=IF(MID(B71,4,1)="T",TV,0)	=D71+E71+F71
91	=IF(MID(B91,3,1)="F",FR,0)	=IF(MID(B91,4,1)="T",TV,0)	=D91+E91+F91

<b>Replication</b>	
Correct replication	1 mark
All formulae fully visible	1 mark
All labels fully visible	1 mark

Row and column headings visible	1 mark
Landscape orientation	1 mark

**Candidate name, Centre number and candidate number**

Page 12	Mark Scheme	Syllabus	Paper
	GCE A/AS LEVEL – October/November 2008	9713	02

#### Step 40

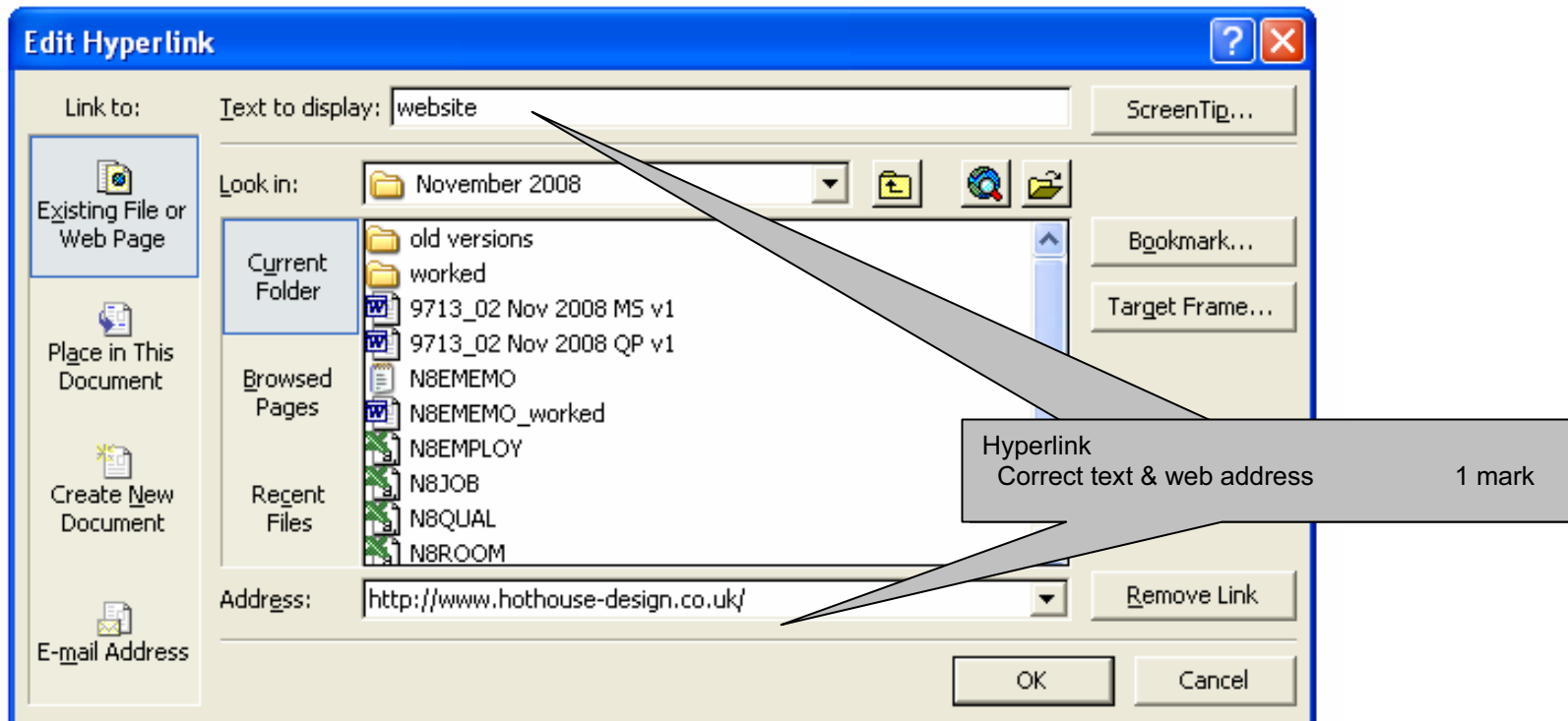
This document is a test document to show each of you the versatility of using hyperlinks within internal documents to point to a variety of places on our website. The website that we have selected for this test belongs to one of our service providers called Hothouse Design.

Click on this link to access their [website](#).

Click on this link to access their [contact details](#).

Click on this link to [e-mail](#) them.

Candidate name, centre number and candidate number



Page 13	Mark Scheme	Syllabus	Paper
	GCE A/AS LEVEL – October/November 2008	9713	02

## Step 41

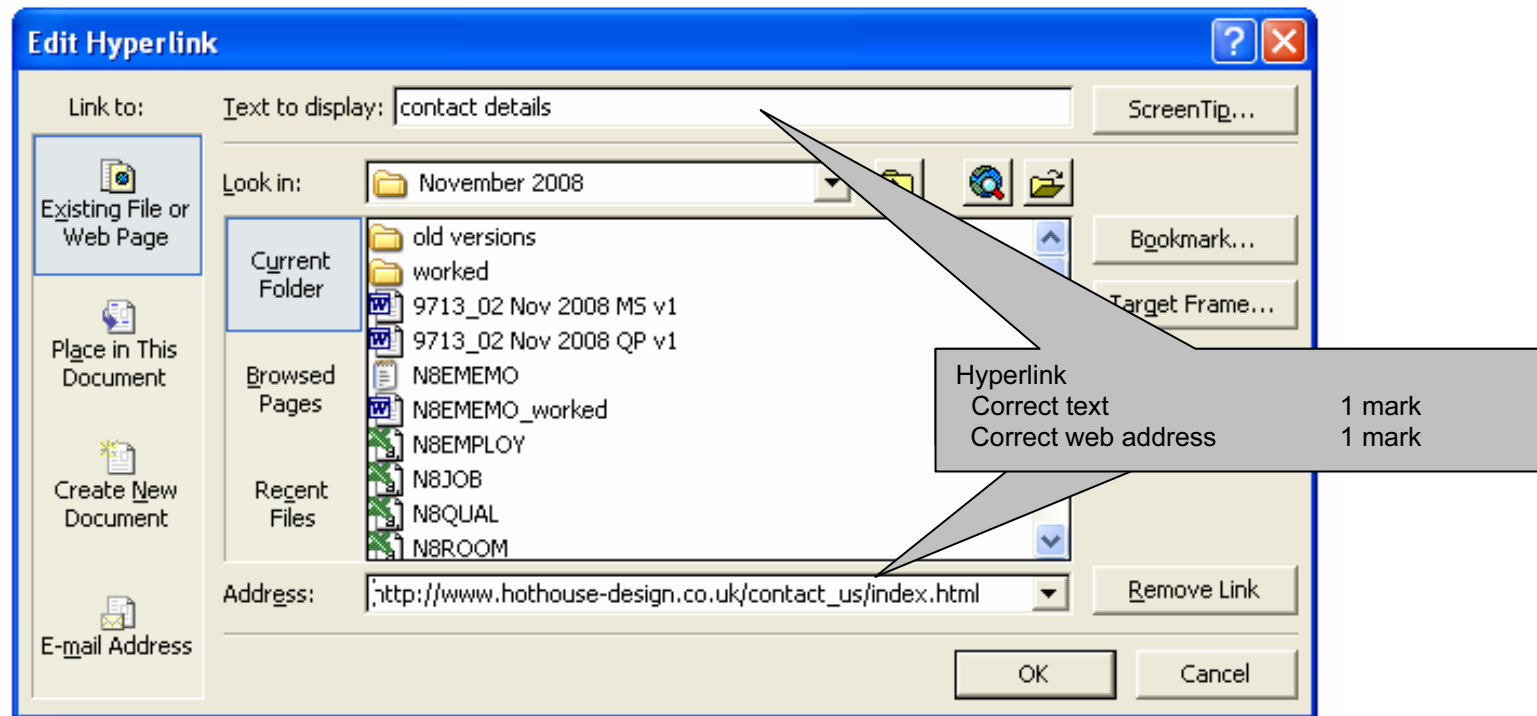
This document is a test document to show each of you the versatility of using hyperlinks within internal documents to point to a variety of places on our website. The website that we have selected for this test belongs to one of our service providers called Hothouse Design.

Click on this link to access their [website](#).

Click on this link to access their [contact details](#).

Click on this link to [e-mail](#) them.

Candidate name, centre number and candidate number



Page 14	Mark Scheme	Syllabus	Paper
	GCE A/AS LEVEL – October/November 2008	9713	02

## Step 42

This document is a test document to show each of you the versatility of using hyperlinks within internal documents to point to a variety of places on our website. The website that we have selected for this test belongs to one of our service providers called Hothouse Design.

Click on this link to access their [website](#).

Click on this link to access their [contact details](#).

Click on this link to [e-mail](#) them.

Candidate name, centre number and candidate number

