

Centre Number						Candidate Number				
Surname										
Other Names										
Candidate Signature										



General Certificate of Secondary Education
Higher Tier
Specimen Paper for Linear Specification
(2014 onwards)

Geography (Specification A)

90301H

Unit 1: Physical Geography

Date: Time:

For this paper you must have:

- the insert (enclosed)
- a ruler.

You may use a calculator.

Time allowed

1 hour 30 minutes

Instructions

- Use black ink or black ball-point pen.
- Fill in the boxes at the top of this page.
- Answer **three** questions: **one** from **Section A**, **one** from **Section B**, and **one** further question from **either** Section.
- You must answer the questions in the spaces provided. Answers written in margins or on blank pages will not be marked.
- Do all rough work in this book. Cross through any work you do not want to be marked.
- Use your case studies to support your answers where appropriate.

Information

- The maximum mark for this paper is 75.
- The marks for questions are shown in brackets
- You will be marked on your ability to:
 - use an appropriate form and style of writing
 - organise relevant information clearly and coherently
 - use specialist vocabulary where appropriate

For Examiner's Use	
Examiner's Initials	
Question	Mark
1	
2	
3	
4	
5	
6	
7	
TOTAL	

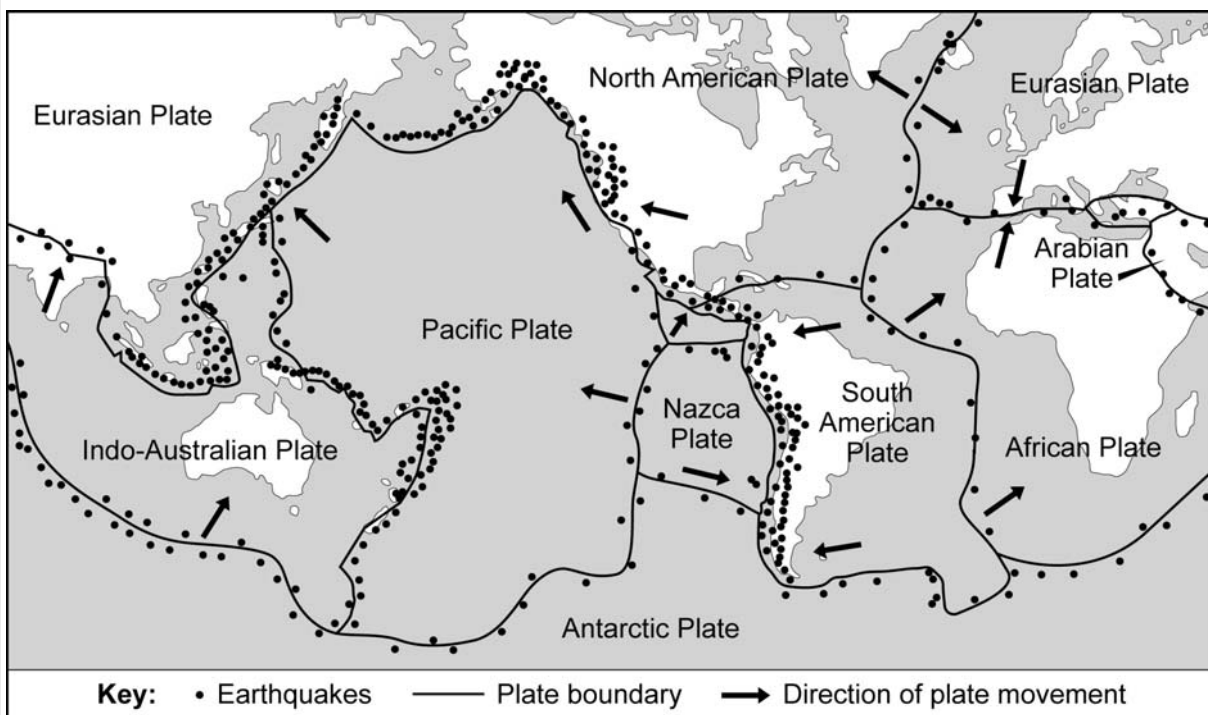


SECTION A

Answer at least **one** question, but **not more than two** questions in this section.
Use your case studies to support your answers where appropriate.

1 The Restless Earth**Total marks for this question: 25 marks**

- 1 (a) Study **Figure 1** which shows the earth's tectonic plates and the places where earthquakes occur worldwide.

Figure 1

- 1 (a) (i) Describe the distribution of earthquakes.

.....

.....

.....

.....

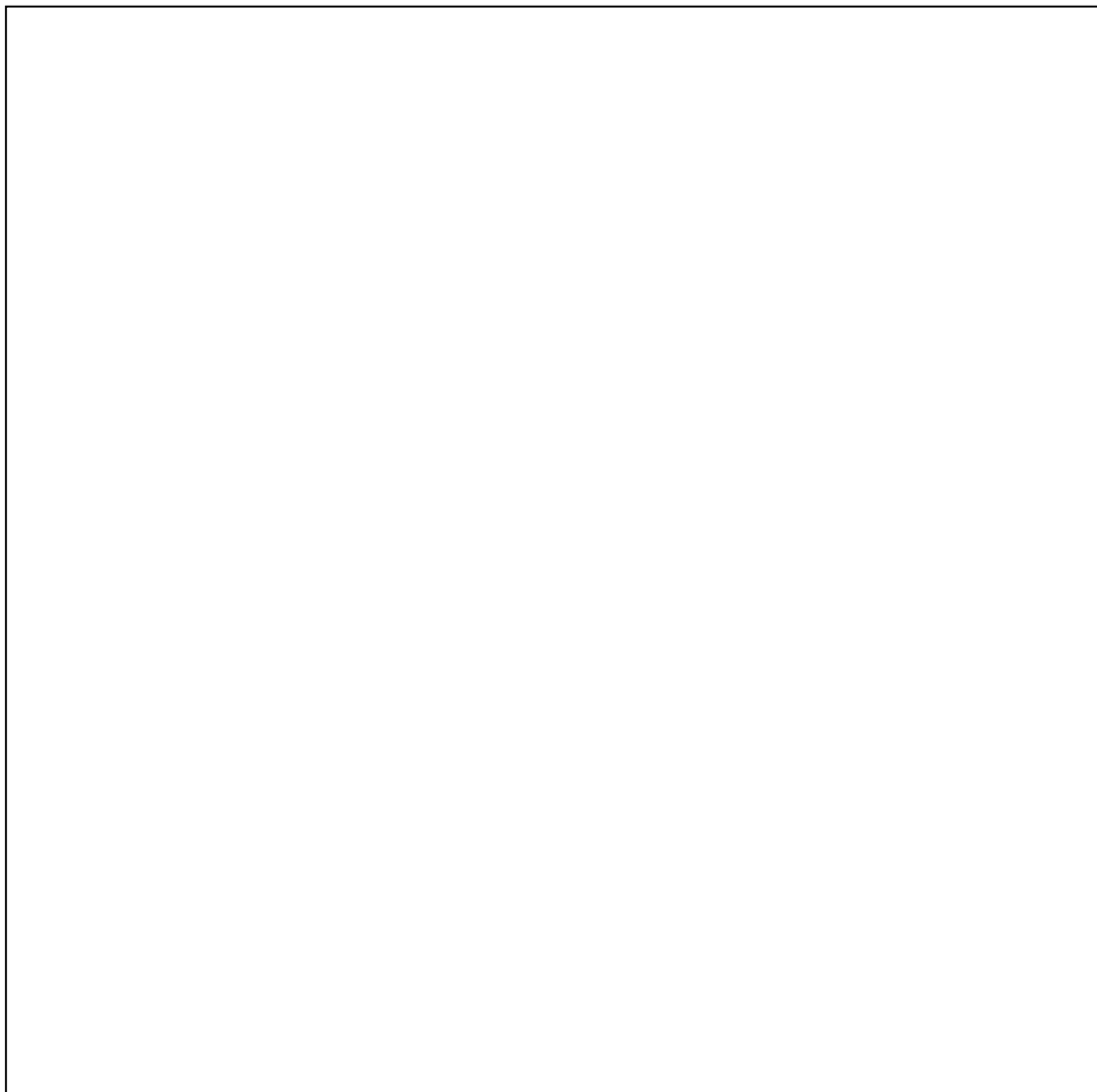
.....

.....

(4 marks)

Barcode

- 1 (a) (ii)** Draw a labelled diagram(s) to explain why earthquakes occur at conservative plate boundaries.



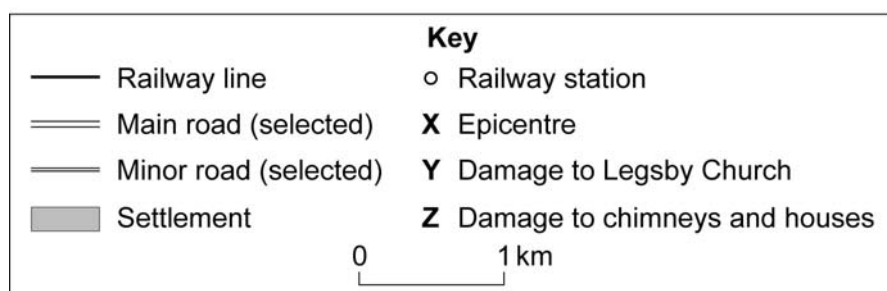
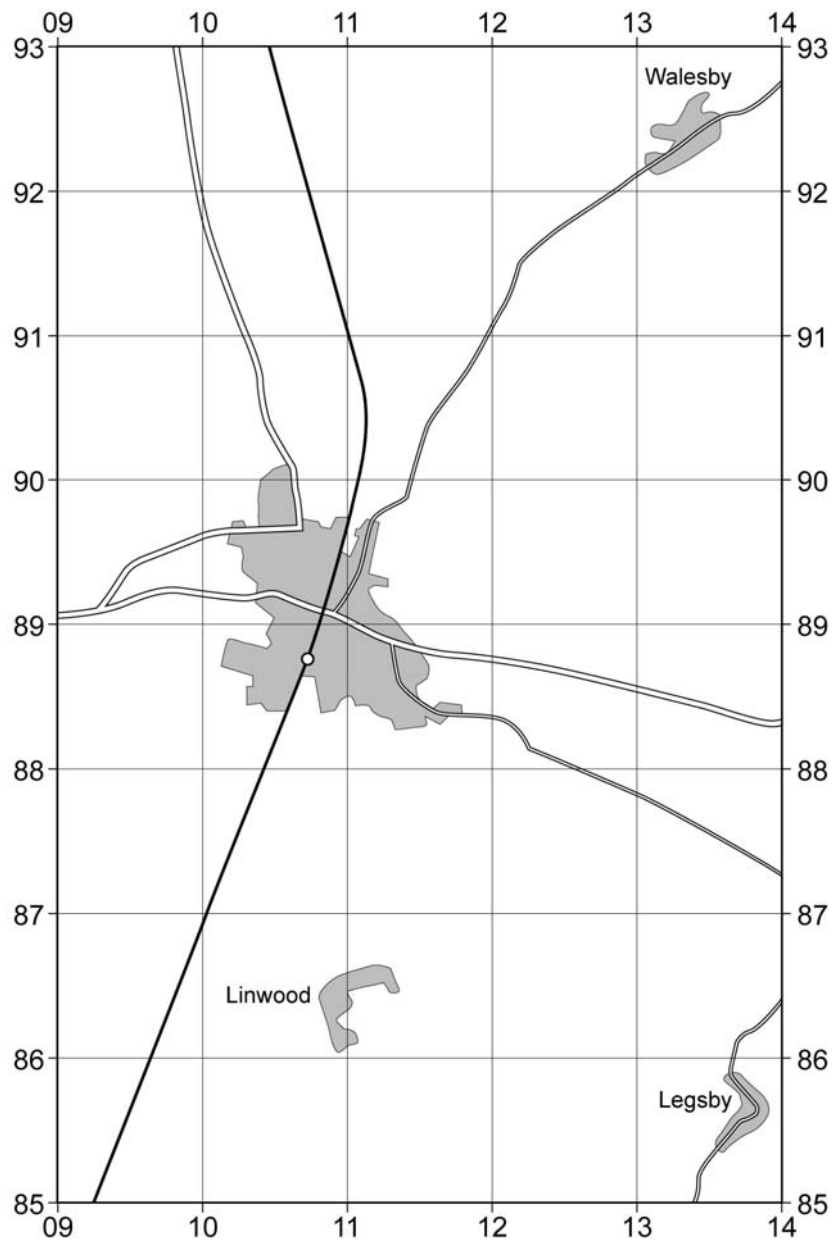
(4 marks)

Question 1 continues on the next page



- 1 (b) Study **Figure 2**, on the insert, a 1:50000 Ordnance Survey map extract of Market Rasen, Lincolnshire. An earthquake struck Market Rasen on 27 February 2008. **Figure 3** is a sketch map drawn from **Figure 2**.

Figure 3



Barcode

- 1 (b) (i) The epicentre of the earthquake was 4km north of the railway station in Market Rasen.

On **Figure 3**, mark the position of the epicentre with the letter **X**.

(2 marks)

- 1 (b) (ii) Damage was reported to Legsby parish church in grid square 1385 and to chimneys of houses at grid reference 108892.

On **Figure 3**, draw two arrows to show where this damage occurred.

Label these arrows with the correct letters **Y** and **Z** from the key.

(3 marks)

- 1 (b) (iii) The earthquake measured 5.2 on the Richter Scale.

With the help of **Figure 2**, and your own knowledge, explain why the damage was limited.

.....

.....

.....

.....

.....

.....

.....

.....

(4 marks)

Extra space.....

.....

.....

.....

Question 1 continues on the next page



(8 marks)

Extra space



There are no questions printed on this page

Turn over for the next question



2 Rocks, Resources and Scenery**Total for this question: 25 marks**

2 (a) Study **Figure 4** on the insert, which shows (part of) a geological time scale.

2 (a) (i) Use **Figure 4** to describe how an 'era' is different from a 'period' on a geological time scale.

.....

.....

.....

.....

(2 marks)

2 (a) (ii) Use the information in **Figure 4** to complete the table below.

Period	Rock Type	Age (millions of years)
Carboniferous		360 – 290
	Granite	290 - 245
Cretaceous	Chalk and Clay	

(3 marks)

Barcode

- 2 (b) (i) Study **Figure 5**, on the insert, which is a photograph of Malham Cove, a limestone area in Yorkshire.

Describe the features of the rock type and the landscape.

.....

.....

.....

.....

.....

.....

.....

.....

(4 marks)

Extra space.....

.....

.....

.....

- 2 (b) (ii) Describe how carbonation occurs.

.....

.....

.....

.....

.....

.....

(4 marks)

Question 2 continues on the next page



- 2 (c) Study **Figure 6**, on the insert, a 1:50000 Ordnance Survey map extract of Westbury, Wiltshire. The quarry is marked **X** on the map.

Use **Figure 6** to suggest environmental disadvantages of the quarry at **X**.

.....

.....

.....

.....

.....

.....

.....

.....

(4 marks)

Extra space

.....

.....

.....

- 2 (d) Using a case study of a quarry you have studied, describe how it has been managed during extraction and restored following the extraction of the resources.

.....

.....

.....

.....

.....

.....

.....



Extra space

.....

.....

.....

.....

.....

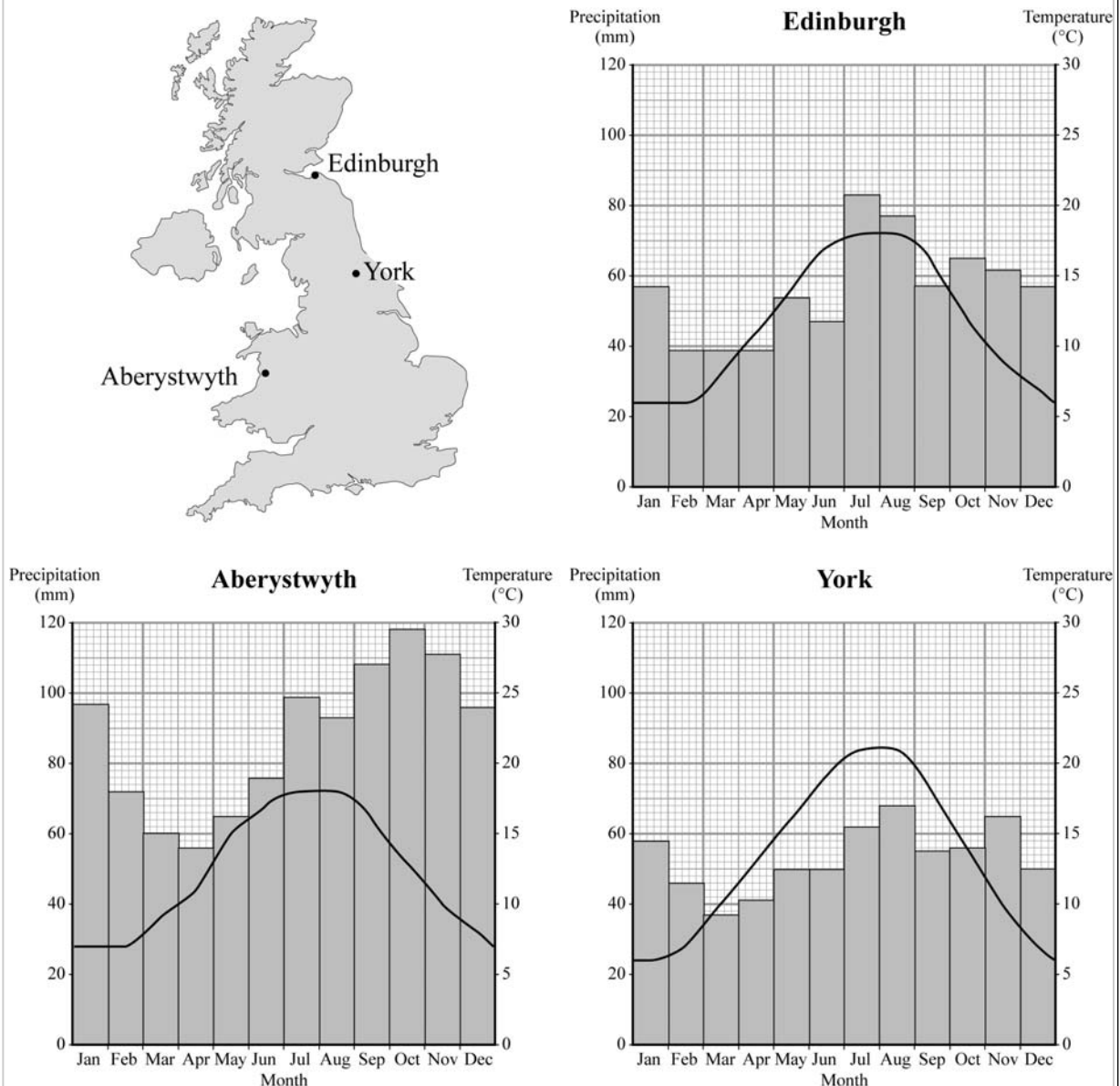
25

Turn over for the next question



3 Challenge of Weather and Climate**Total for this question: 25 marks**

- 3 (a)** Study **Figure 7** which shows climate graphs for three cities in the United Kingdom.

Figure 7

3 (a) (i) Describe the climate of York.

.....

.....

.....

.....

.....

.....

(3 marks)

3 (a) (ii) Explain why the climate of Aberystwyth is different to that of Edinburgh.

.....

.....

.....

.....

.....

.....

.....

.....

.....

.....

(4 marks)

Extra space

.....

.....

.....

Question 3 continues on the next page

3 (b) **Figure 8**, on the insert, is a newspaper extract describing floods in Sheffield in June 2007.

3 (b) (i) Give **two** pieces of evidence that suggest Sheffield experienced extreme weather conditions before the flood.

1

.....

2

.....

(2 marks)

3 (b) (ii) Describe the different ways in which people's lives were affected by the extreme weather in Sheffield in June 2007.

.....

.....

.....

.....

.....

.....

.....

.....

(4 marks)

Extra space

.....

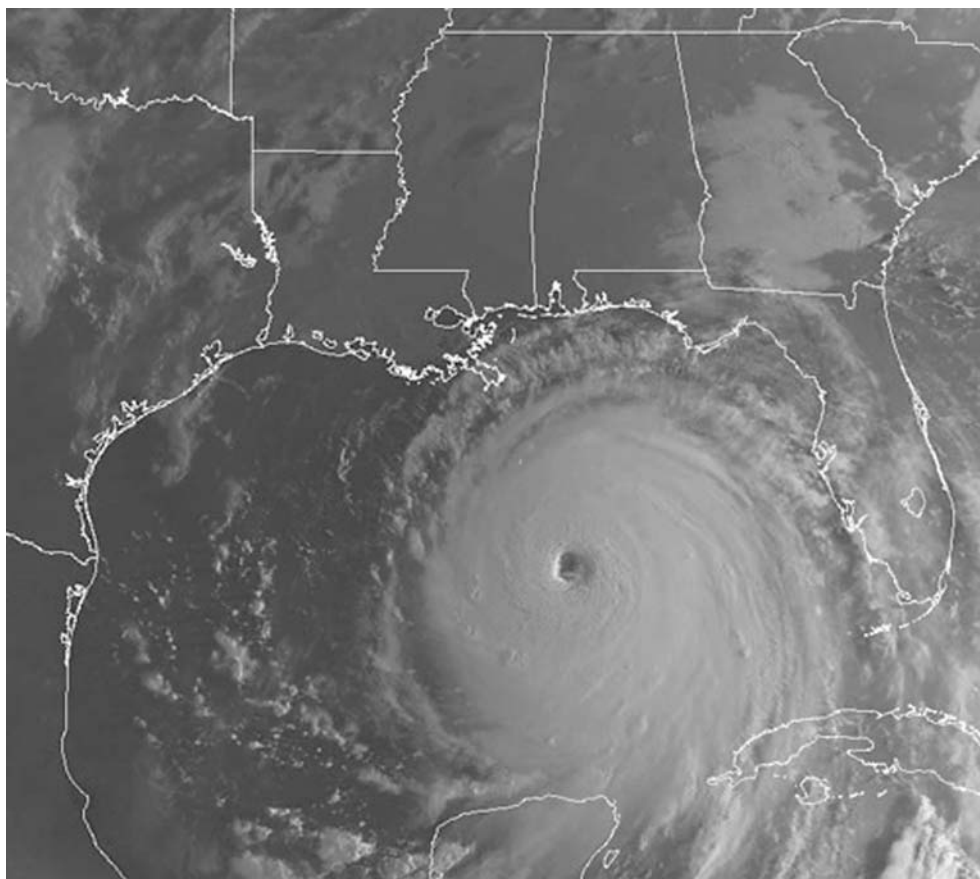
.....

.....



- 3 (c) **Figure 9**, on the insert, is a satellite image of Hurricane Katrina in August 2005. **Figure 10** is a black and white photocopy of **Figure 9**.

Figure 10



- 3 (c) (i) Label **Figure 10** to show the characteristics of Hurricane Katrina. (4 marks)

Question 3 continues on the next page



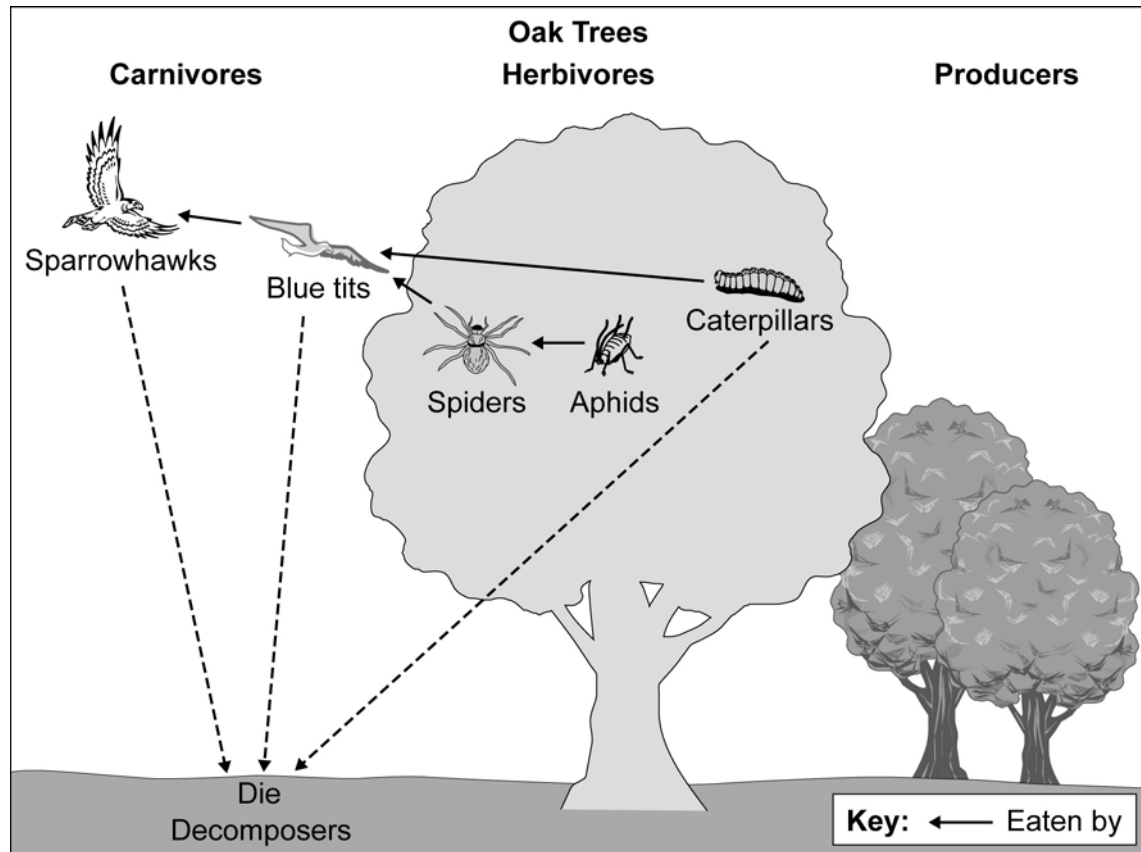


4 Living world

Total for this question: 25 marks

- 4 (a)** Study **Figure 11**, which shows part of a deciduous forest ecosystem.

Figure 11



- 4 (a) (i)** Explain the importance of the tree in the food web.

.....

.....

.....

.....

.....

.....

(4 marks)

Question 4 continues on the next page



- 4 (a) (ii) Explain how nutrients in the tree are recycled in the deciduous forest ecosystem.

.....

.....

.....

.....

.....

.....

.....

.....

(4 marks)

Extra space

.....

.....

.....



Barcode

4 (b) Study **Figure 12**, on the insert, a 1:50000 Ordnance Survey map extract of part of Epping Forest, a deciduous forest near London.

4 (b) (i) Measure the distance along the A104 from the roundabout at 427994 to the road junction at 408953

.....km

(2 marks)

4 (b) (ii) Use **Figure 12** to describe recreation activities in Epping Forest.

.....

.....

.....

.....

.....

.....

(3 marks)

Question 4 continues on the next page



- 4 (c) Study **Figures 13a and 13b**, on the insert, photographs of vegetation in a hot desert area.

Describe, and suggest reason(s) for, the changes in vegetation.

.....

.....

.....

.....

.....

.....

.....

.....

(4 marks)

Extra space

.....

.....

.....



Barcode

.....

.....

END OF SECTION A



Barcode

SECTION B

Answer at least **one** question, but **not more than two** questions in this section.
Use your case studies to support your answers where appropriate.

5 Water on the Land

Total for this question: 25 marks

- 5 (a) Study **Figure 14**, on the insert, a 1:50 000 Ordnance Survey map extract of Boscastle.

- 5 (a) (i) A 'waterfall' is found at **Y**. Give the map evidence for this landform, apart from the label.

.....

.....

.....

.....

(2 marks)

- 5 (a) (ii) Grid squares 1290 and 1291 are outlined on **Figure 14**.

Describe the valley of the River Valency in these grid squares.

.....

.....

.....

.....

(2 marks)

Question 5 continues on the next page



5 (b) Describe and explain the formation of ox-bow lakes.

.....

.....

.....

.....

.....

.....

.....

.....

.....

.....

.....

.....

.....

.....

(6 marks)

Extra space

.....

.....

.....

.....



Barcode

5 (c) Study **Figure 14**, the Ordnance Survey map extract of Boscastle.

5 (c) (i) Boscastle experienced a flash flood on 16 August 2004. Using **Figure 14**, describe how each of the following contributed to the flooding.

The tributary joining the River Valency at grid reference (099913).

.....

.....

.....

.....

The settlement of Boscastle in grid square 0990.

.....

.....

.....

.....

(4 marks)

Extra space

.....

.....

.....

.....

Question 5 continues on the next page

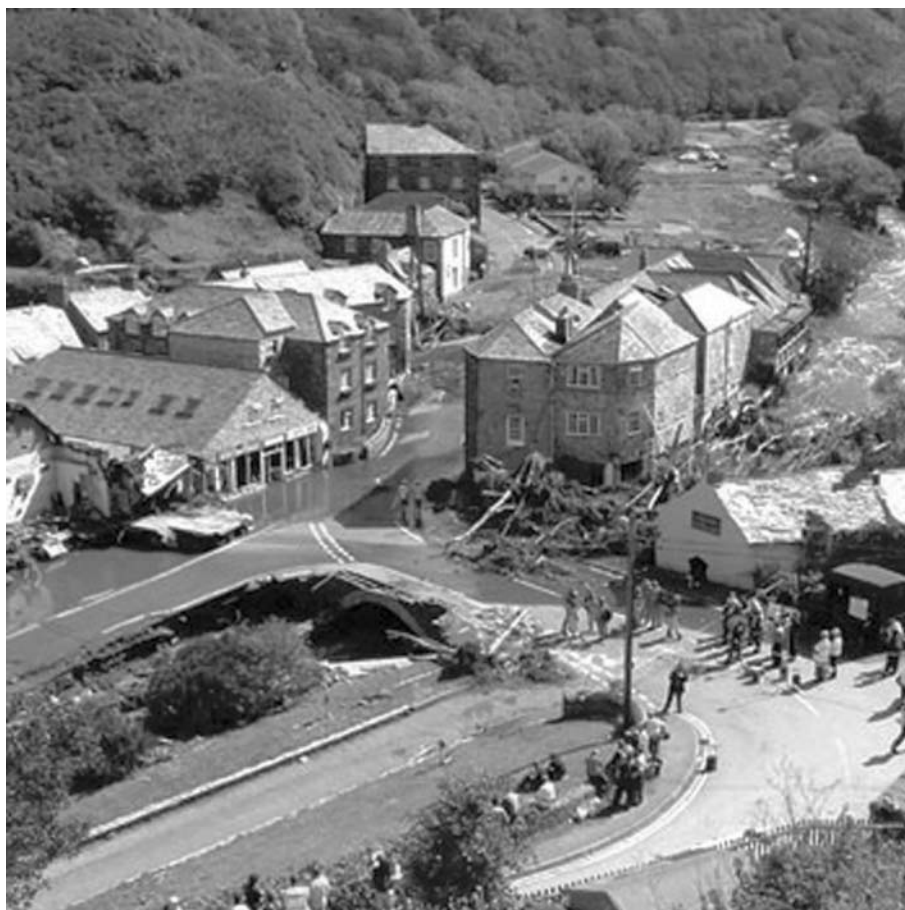


- 5 (c) (ii) Study **Figure 15** on the insert, which shows part of Boscastle on 17 August 2004. **Figure 16** is a black and white photocopy of **Figure 15**.

Label **Figure 16** to describe the different effects of flooding on Boscastle.

(3 marks)

Figure 16



6 Ice on the Land**Total for this question: 25 marks**

- 6** (a) Study **Figure 17** on the insert, a 1:25 000 Ordnance Survey map extract of Helvellyn, Lake District.

- 6** (a) (i) Helvellyn is found at **X** on **Figure 17**. Give the 6-figure grid reference for Helvellyn.

.....
(1 mark)

- 6** (a) (ii) State the distance along the footpath from Glenridding Youth Hostel (366174) to Red Tarn (350154).

..... km
(1 mark)

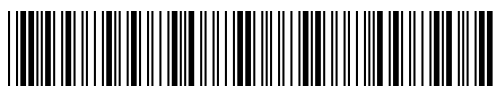
- 6** (a) (iii) Grid square 3415 is outlined on **Figure 17**.

Describe the glacial landforms found in grid square 3415.

.....
.....
.....
.....
.....
.....
.....
.....
.....
(4 marks)

Extra space

.....
.....
.....



Barcode

- 6 (b) (i) **Figure 18** on the insert, is a photograph of a glacial trough. **Figure 19** is a black and white photocopy of **Figure 18**.

Label **Figure 19** to show the characteristics of the landform.

(3 marks)

Figure 19



- 6 (b) (ii) Explain the formation of a glacial trough.

.....

.....

.....

.....

.....

.....

.....

.....

.....

.....

.....
.....
(6 marks)

Extra space

-
.....
.....
.....
- 6 (c) Study **Figure 20** on the insert, a photograph of the Athabasca glacier in Banff National Park in Canada.
- 6 (c) (i) Glaciers advance and retreat. State whether the Athabasca is currently advancing or retreating and give evidence from **Figure 20** to support your decision.

.....
.....
.....
.....
(2 marks)



Barcode

7 The Coastal Zone**Total for this question: 25 marks**

- 7 (a)** Contrast the process of freeze thaw weathering with chemical weathering.

.....

.....

.....

.....

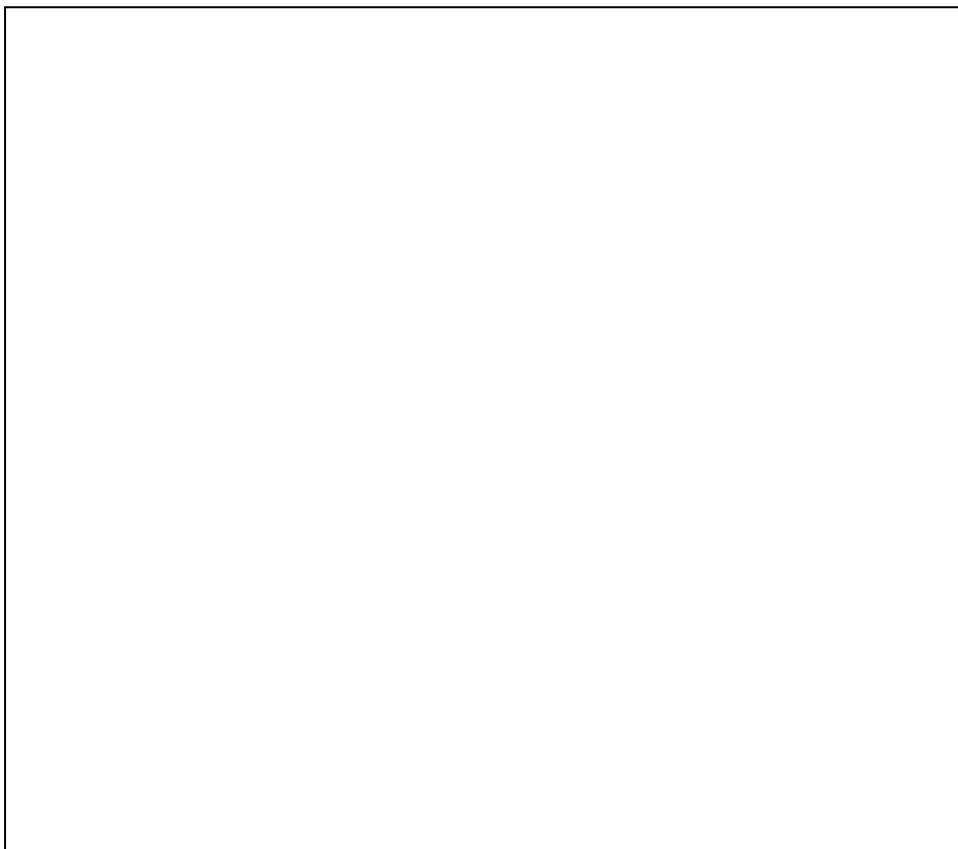
.....

.....

(3 marks)

- 7 (b) (i)** Study **Figure 21**, on the insert, which shows the coastal zone at Flamborough, North Yorkshire.

Using **Figure 21**, draw a labelled sketch in the box below to show the landforms and characteristics of this coast.

*(4 marks)*

Barcode

- 7 (b) (ii) Mass movement is common in the area shown in **Figure 21**. What role does mass movement have on coasts such as that shown in **Figure 21**?

.....

.....

.....

.....

(2 marks)

- 7 (c) Study **Figure 22**, on the insert, a 1:50 000 Ordnance Survey map extract of Mappleton on the Holderness coast in Yorkshire.

- 7 (c) (i) Grid squares 2243 and 2244 are outlined on **Figure 22**. Describe the physical features of the coastline in these grid squares.

.....

.....

.....

.....

(2 marks)

- 7 (c) (ii) Describe the effects of continued coastal erosion on the settlement and residents of Mappleton.

.....

.....

.....

.....

.....

.....

.....

.....

(4 marks)

Question 7 continues on the next page



(Extra space)

.....

.....

.....

- 7** (c) (iii) Suggest how the coastline at Mappleton might be managed to reduce the rate of erosion.

.....

.....

.....

.....

(2 marks)



There are no questions printed on this page

ACKNOWLEDGEMENT OF COPYRIGHT-HOLDERS AND PUBLISHERS

Permission to reproduce all copyright material has been applied for. In some cases efforts to contact copyright-holders have been unsuccessful and AQA will be happy to rectify any omissions of acknowledgements in future papers if notified.

Figure 1: (Tectonic Plate data) *Understanding GCSE Geography Teachers Resource Pack* by A BOWEN & J PALLISTER.
Reprinted by Permission of Pearson Education Ltd. (Earthquakes) Reprinted by permission of the Bulletin of the Seismological Society of America, 1969

Figure 7: www.bbc.co.uk

Figure 16: www.bbc.co.uk

Figure 19: J CANAVAN

Copyright © 2012 AQA and its licensors. All rights reserved.

