

| | | | | | | | | | | | |
|---------------------|--|--|--|--|--|------------------|--|--|--|--|--|
| Surname | | | | | | Other Names | | | | | |
| Centre Number | | | | | | Candidate Number | | | | | |
| Candidate Signature | | | | | | | | | | | |

| |
|--------------------|
| For Examiner's Use |
|--------------------|

General Certificate of Education
January 2008
Advanced Subsidiary Examination



GEOGRAPHY (SPECIFICATION A)
Unit 3 Geographical Skills

GGA3

Monday 14 January 2008 9.00 am to 10.00 am

For this paper you must have:

- the resource booklet (enclosed).

You may use a calculator.

| For Examiner's Use | | | |
|---------------------|------|----------|------|
| Question | Mark | Question | Mark |
| 1 | | | |
| 2 | | | |
| Total (Column 1) → | | | |
| Total (Column 2) → | | | |
| TOTAL | | | |
| Examiner's Initials | | | |

Time allowed: 1 hour

Instructions

- Use blue or black ink or ball-point pen. You may use pencil for maps, diagrams and graphs.
- Fill in the boxes at the top of this page.
- Answer **one** question, **either** Question 1 in Section A, **or** Question 2 in Section B.
- Do all rough work in this book. Cross through any work you do not want to be marked.

Information

- The maximum mark for this paper is 50.
- The marks for questions are shown in brackets.
- You are expected to use a calculator where appropriate.
- You will be marked on your ability to use an appropriate form and style of writing, to organise relevant information clearly and coherently, and to use specialist vocabulary where appropriate. The legibility of your handwriting and the accuracy of your spelling, punctuation and grammar will also be considered.

Advice

- Where appropriate, credit will be given for the use of diagrams and where reference is made to your personal investigative work.

Answer **one** question, **either** Question 1 in Section A, **or** Question 2 in Section B.

SECTION A

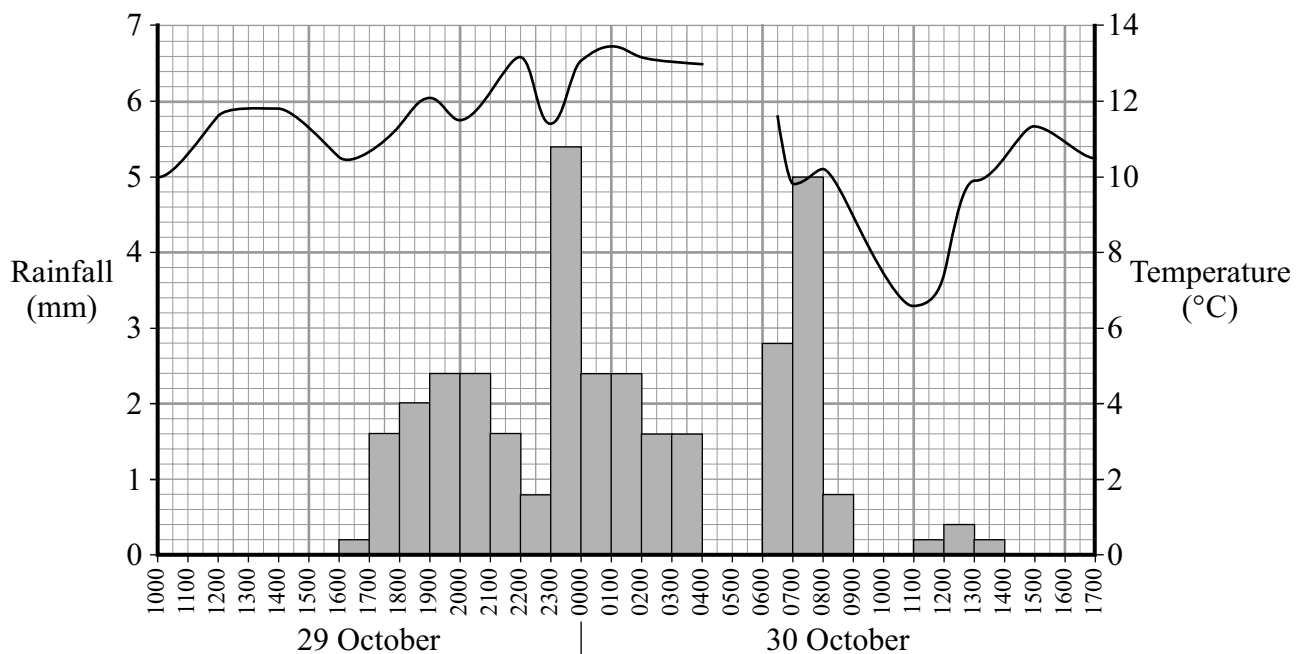
Answer **all** parts of this question in the spaces provided.

The Physical Environment

Title: Changing weather and climate

- 1 (a) (i) **Figure 1** shows the temperature and rainfall at Heathrow, London during the passage of a depression in October 2000.

Figure 1



Complete **Figure 1** by adding the following information:

| Date | Time | Rainfall (mm) | Temperature (°C) |
|------------|-----------|---------------|------------------|
| 30 October | 0400–0500 | 2.0 | 13.1 |
| 30 October | 0500–0600 | 1.4 | 12.8 |

(4 marks)

(ii) Describe and comment on the trends shown in **Figure 1**.

.....

.....

.....

.....

.....

.....

.....

.....

.....

.....

.....

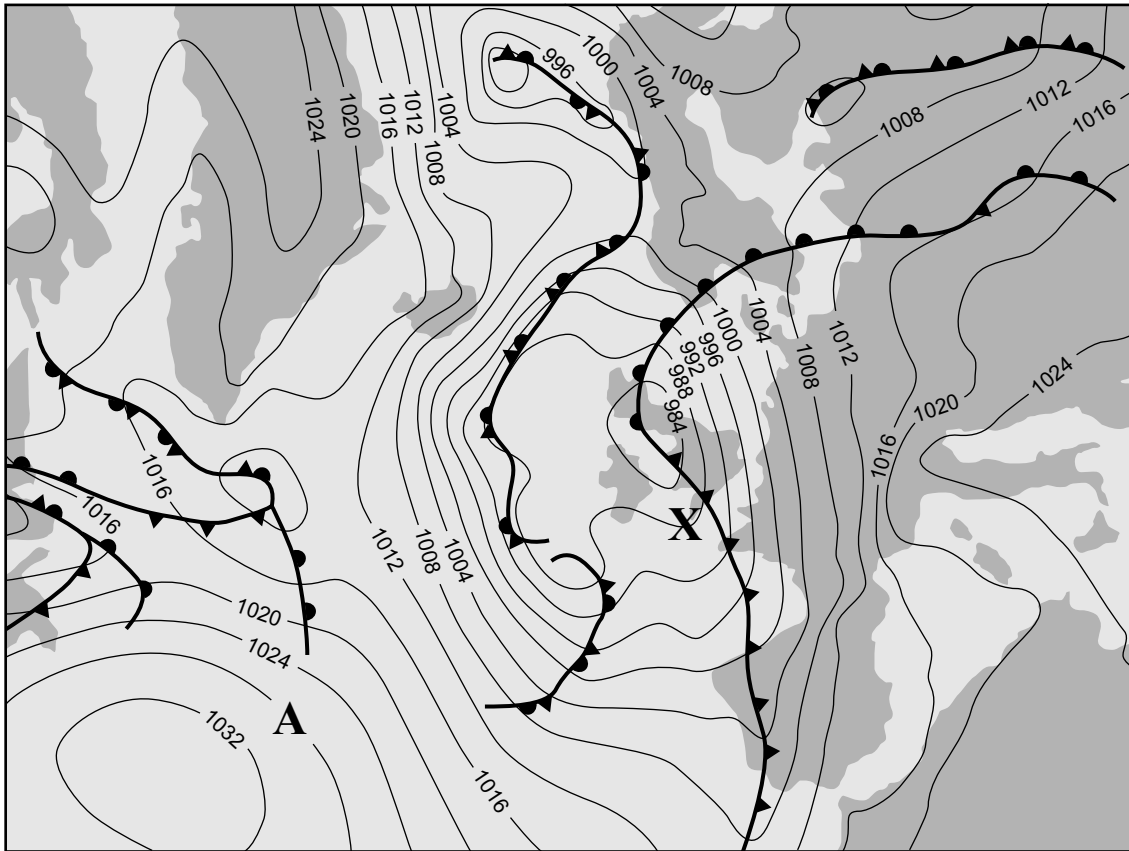
.....

(6 marks)

Question 1 continues on the next page

(b) **Figure 2** shows the synoptic chart for 16 November 2006.

Figure 2



- (i) On **Figure 2**, label:
- an area of low pressure (L)
 - a warm front (WF) and a cold front (CF)
 - a warm sector (WS)
 - the value of isobar A.

(4 marks)

- (ii) Describe and suggest reasons for the current weather conditions likely to be experienced at **X** on **Figure 2**.

.....

.....

.....

.....

.....

.....

.....

.....

.....

.....

.....

.....

(6 marks)

Question 1 continues on the next page

- (c) **Figure 3** (resource booklet) shows selected weather data for Heathrow and newspaper articles relating to possible changes in the weather.

Summarise the changes being observed and comment on the extent to which they indicate the impact of global warming on weather in the UK.

.....

.....

.....

.....

.....

.....

.....

.....

.....

.....

.....

.....

.....

.....

.....

.....

.....

.....

.....

.....

(8 marks)

- (d) (i) **Figures 4a** and **4b** (resource booklet) show past and predicted global temperatures.

Outline and comment on the past and predicted temperature changes.

.....

.....

.....

.....

.....

.....

.....

.....

.....

.....

.....

.....

(6 marks)

Question 1 continues on the next page

- (ii) **Figure 5** (resource booklet) is a newspaper extract discussing global warming.

To what extent do you agree that the actions of the different groups mentioned in **Figure 5** support the concept of ‘thinking globally, acting locally’?

.....

.....

.....

.....

.....

.....

.....

.....

.....

.....

.....

.....

.....

.....

.....

.....

.....

.....

.....

.....

.....

(8 marks)

- (e) (i) You have experienced geography fieldwork as part of the course.

For **any** geography fieldwork study that you have undertaken (either physical or human), state its aim, the area in which it was carried out, and why the study area was deemed to be suitable for the study.

.....

.....

.....

.....

.....

.....

(3 marks)

- (ii) For **one** item of primary data you collected for the study in (e)(i), outline the method used and state your risk assessment in connection with its collection.

.....

.....

.....

.....

.....

.....

.....

.....

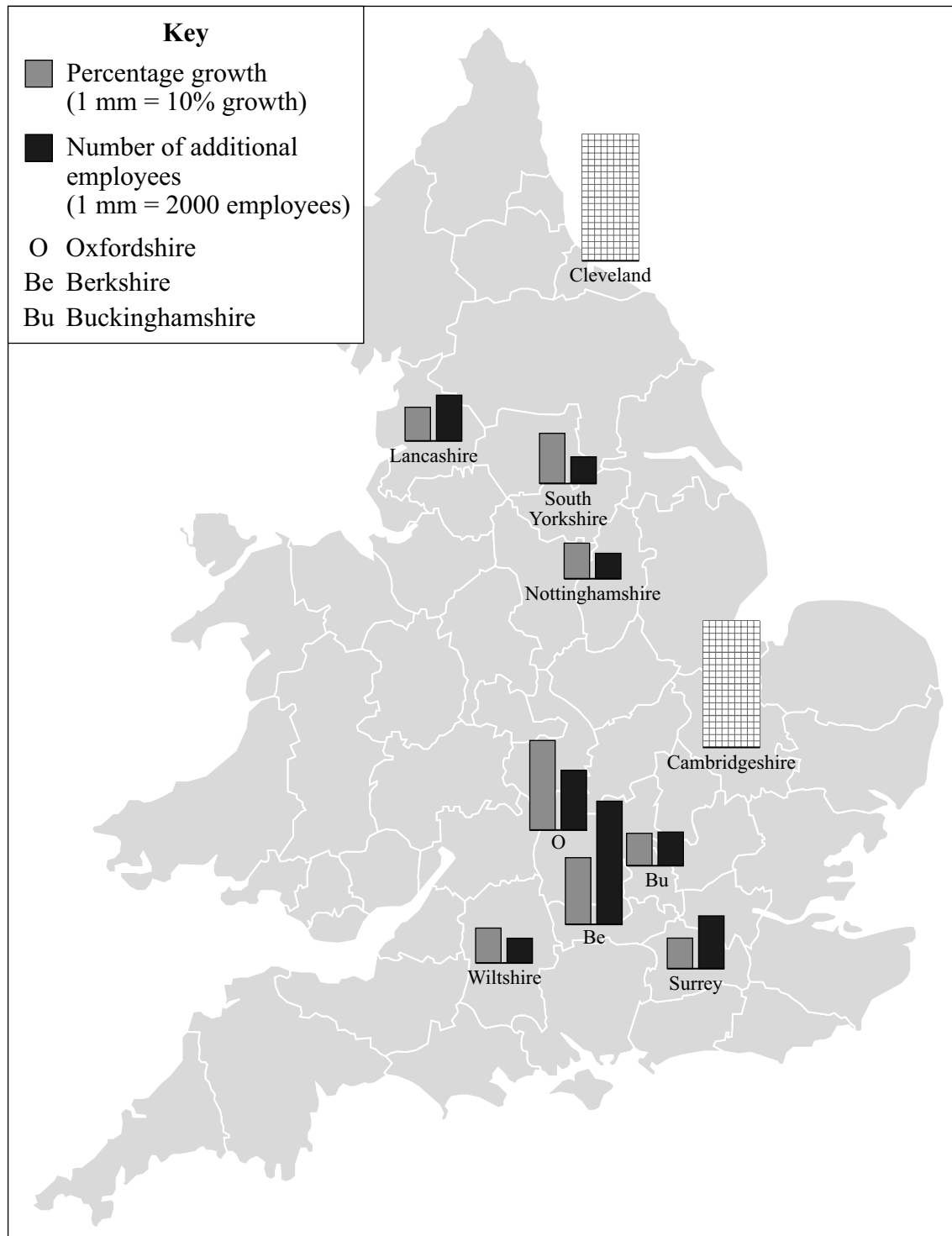
.....

.....

(5 marks)

End of Section A

Answer **all** parts of this question in the spaces provided.

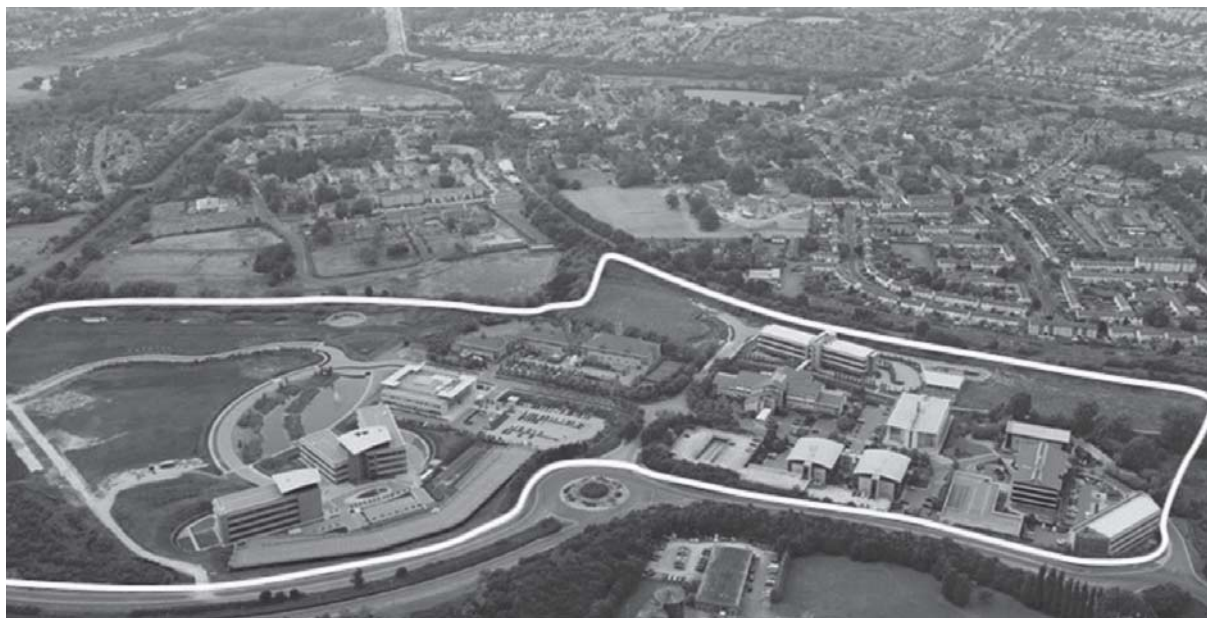
Figure 6

Question 2 continues on the next page

- (b) **Figure 7** (resource booklet) is an aerial photograph of Oxford Science Park. **Figure 8** is a black and white photocopy of **Figure 7**.
- (i) Label **Figure 8** to show the characteristics of the buildings, environment and internal layout of the Science Park.

(8 marks)

Figure 8



- You are a partner in a successful and expanding computer software company. Using evidence from **Figures 7, 9 and 10**, write an e-mail to your business partner explaining why you believe Oxford Science Park would be an ideal location for your company.

[illegible]

www.theallpapers.com

- (c) **Figures 11a** and **11b** (resource booklet) give information about the origin of French clothes and the different items used in the manufacture of French jeans.

To what extent do **Figures 11a** and **11b** provide evidence for the process of globalisation?

.....

.....

.....

.....

.....

.....

.....

.....

.....

.....

.....

.....

.....

.....

.....

(6 marks)

- (d) **Figure 12** (resource booklet) outlines some issues relating to the production of clothing. Outline and comment on the issues considered in **Figure 12**.

.....

.....

.....

.....

.....

.....

.....

.....

.....

.....

.....

.....

.....

.....

.....

.....

.....

.....

(8 marks)

- (e) (i) You have experienced geography fieldwork as part of the course.

For **any** geography fieldwork study that you have undertaken (either physical or human), state its aim, the area in which it was carried out, and why the study area was deemed to be suitable for the study.

.....

.....

.....

.....

.....

.....

.....

(3 marks)

- (ii) For **one** item of primary data you collected for the study in (e)(i), outline the method used and state your risk assessment in connection with its collection.

.....

.....

.....

.....

.....

Question 2 continues on the next page

.....

.....

.....

.....

.....

(5 marks)

50

END OF QUESTIONS

ACKNOWLEDGEMENT OF COPYRIGHT-HOLDERS AND PUBLISHERS

Permission to reproduce all copyright material has been applied for. In some cases, efforts to contact copyright-holders have been unsuccessful and AQA will be happy to rectify any omissions of acknowledgements in future papers if notified.

Question 1 Figures 1 & 2: adapted from Crown Copyright data supplied by the Met Office
Question 2 Figure 6: *GeoActive Online* 358, series 19, Nelson Thornes

General Certificate of Education
January 2008
Advanced Subsidiary Examination

GEOGRAPHY (SPECIFICATION A)
Unit 3 Geographical Skills

Resource Booklet

GGA3



Figure 3

| Month | 1996 | | 2005 | |
|--------------|-------------------------------------|--------------------------------|-------------------------------------|--------------------------------|
| | Maximum temperature (°C) | Total rainfall (mm) | Maximum temperature (°C) | Total rainfall (mm) |
| January | 7.2 | 42 | 9.5 | 22 |
| February | 6.7 | 49 | 7.3 | 20 |
| March | 8.5 | 31 | 11.5 | 44 |
| April | 14.3 | 25 | 14.6 | 30 |
| May | 15.1 | 26 | 17.7 | 20 |
| June | 22.8 | 12 | 22.8 | 33 |
| July | 24.2 | 29 | 23.2 | 46 |
| August | 23.1 | 46 | 23.2 | 42 |
| September | 19.2 | 22 | 21.4 | 48 |
| October | 16.6 | 35 | 17.8 | 73 |
| November | 10.5 | 91 | 10.7 | 29 |
| December | 6.2 | 13 | 8.2 | 44 |
| Year | 14.5 | 421 | 15.7 | 451 |

Newspaper articles relating to British weather:

"Britain Gets a Monsoon Forecast"
by Jonathon Milne, The Sunday
Times, 3 September, 2006 - not
reproduced here due to third-party
copyright constraints.

"So, was it a washout, or one of
the best summers of our lives?"
by Paul Simons, The Times,
2 September 2006 - not reproduced
here due to third-party copyright
constraints.

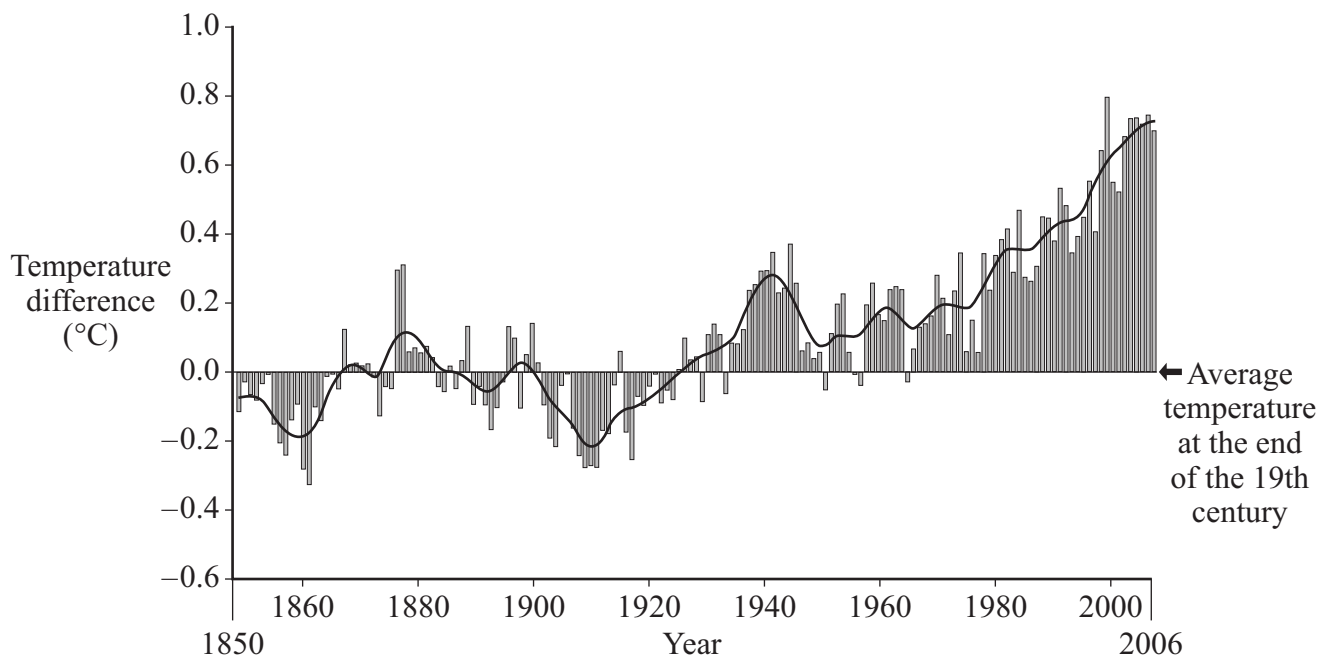
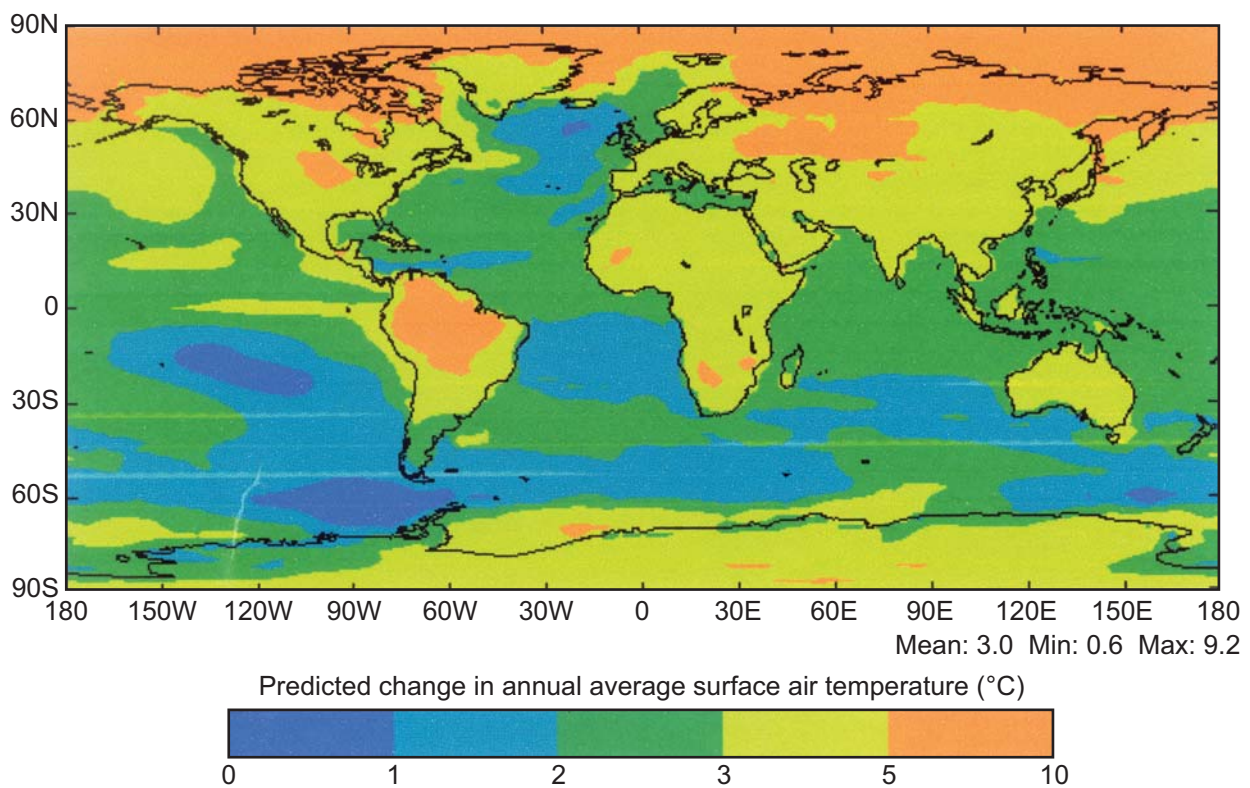
Figure 4a**Figure 4b**

Figure 5

Newspaper article: "The War on Hot Air" by Jonathon Leake,
The Sunday Times, 3 September, 2006 - not reproduced here
due to third-party copyright constraints.

Figure 7

Figure 9

Figure 10

Ordnance Survey Map Extract: showing location of Oxford Science Park
- not reproduced here due to third-party copyright constraints.

Figure 11a

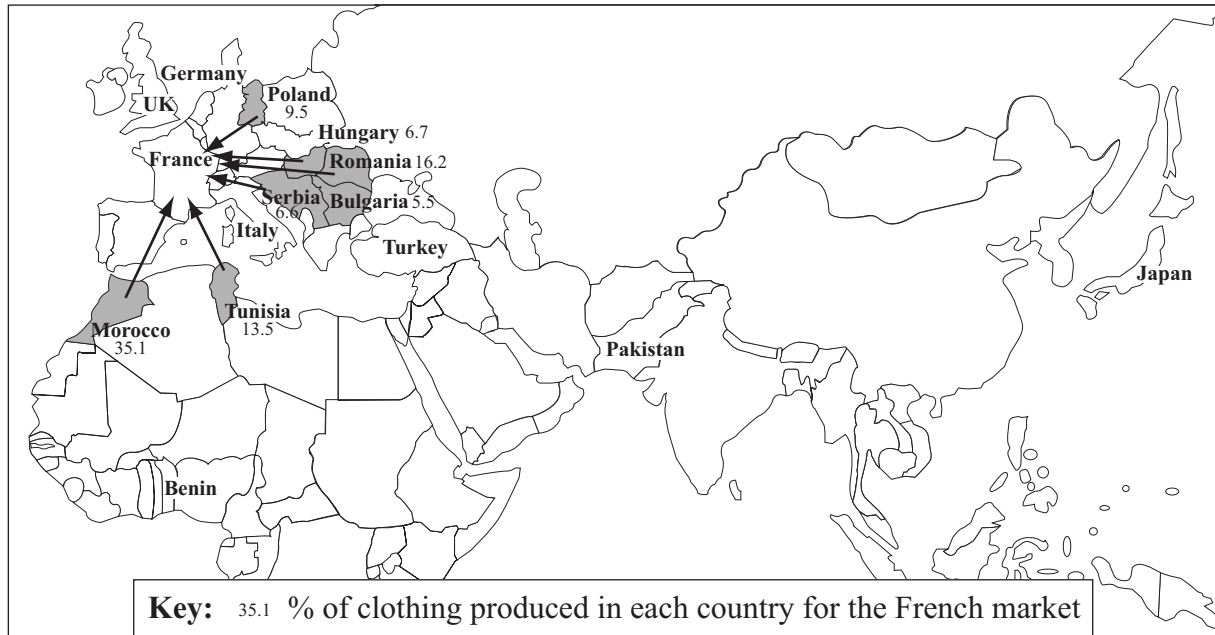


Figure 11b

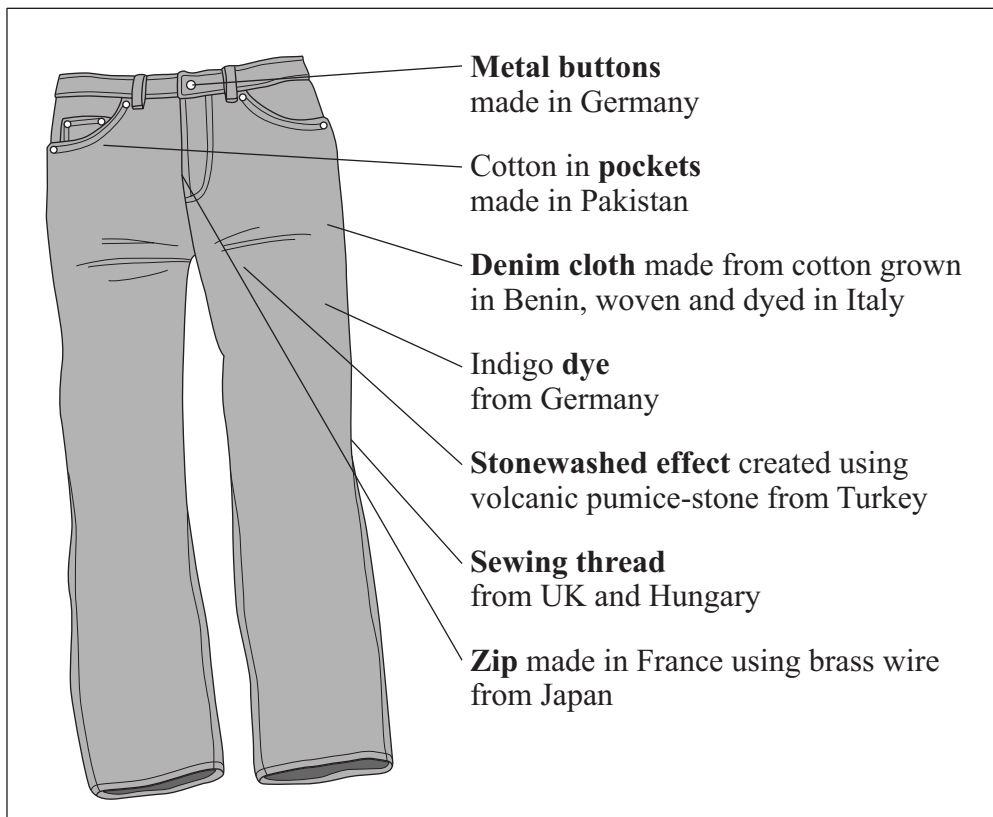


Figure 12

Is trade in clothing fair?

Jeans are not usually produced in an ethical way. As 'No Sweat', an organisation campaigning against factory sweatshops, says: "The jeans industry is rotten. When you buy a cheap pair for £10, only one penny gets to the factory worker." The typical mark-up on a pair of jeans is 50%.

In March 2005, the Panorama TV programme 'The Dollar a Day Dress' highlighted that the world trade system can harm the poorest countries. Mali in west Africa grows cotton as a cash crop but cannot compete on the world market with the USA, which heavily subsidises its own cotton farmers, making US cotton cheaper. To put it in perspective, the West (including the EU) gives \$50 billion a year in aid to poor countries, but over \$300 billion in subsidies to its own farmers.

An agreement that gave Sri Lanka a relatively high quota of garments for export was abolished in January 2005. This means that Sri Lanka has to compete with other garment producers as it no longer has a guaranteed overseas market. This has put pressure on the Sri Lankan government to keep costs down in order to remain competitive, and the workforce will inevitably suffer, as conditions will be even worse than they are now.

The garment industry in Sri Lanka

90% of workers are women. They are illiterate and semi-skilled. The weekly wage is equal to the minimum wage for one hour's work in the UK. Under International Labour Organisation rules they should not work after 10 pm but are often forced to do so. They may be forced to work 80 hours overtime a month.

Although unions have been legal since January 2000, if a worker joins one she is likely to be intimidated. There are no pension schemes, training, insurance or childcare.



Anusha's experience



Anusha works from 6 am to 7 pm every day, sewing skirts which are sold in the UK. Tonight she cannot go home because the factory she works in is in Batticaloa, in the east of Sri Lanka, which is in a war zone, and her home is one hour away by bus. After she has eaten some food (which her employer deducts from her wages) she will have to sleep on the factory floor. At the end of the month she will be paid £4 even though the minimum wage is £17. Her wages don't even cover her travel home. She cannot join a union because she works in a Free Trade Zone.

Adapted from Hilary Edge, *GeoActive* No 355, Nelson Thornes, April 2006

There is no source material printed on this page

There is no source material printed on this page

There is no source material printed on this page

ACKNOWLEDGEMENT OF COPYRIGHT-HOLDERS AND PUBLISHERS

Permission to reproduce all copyright material has been applied for. In some cases, efforts to contact copyright-holders have been unsuccessful and AQA will be happy to rectify any omissions of acknowledgements in future papers if notified.

| | | |
|------------|-----------------------|--|
| Question 1 | Figure 3: | "Britain gets a monsoon forecast", Jonathan Milne, <i>The Sunday Times</i> , London |
| Question 1 | Figure 3: | "So, was it a washout...", Paul Simons, <i>The Times</i> |
| Question 1 | Figures 3, 4a & 4b: | adapted from Crown Copyright data, supplied by the Met Office |
| Question 1 | Figure 5: | "The war on hot air", Jonathan Leake, <i>The Sunday Times</i> , London |
| Question 2 | Figures 7, 8, 9: | The Oxford Science Park |
| Question 2 | Figure 10: | Reproduced by permission of Ordnance Survey on behalf of HMSO. © Crown copyright 2007. All rights reserved. Ordnance Survey Licence number 100041328 |
| Question 2 | Figures 11a, 11b, 12: | Hilary Edge, <i>GeoActive</i> 355, Series 17, Issue 3, April 2006, Nelson Thornes |